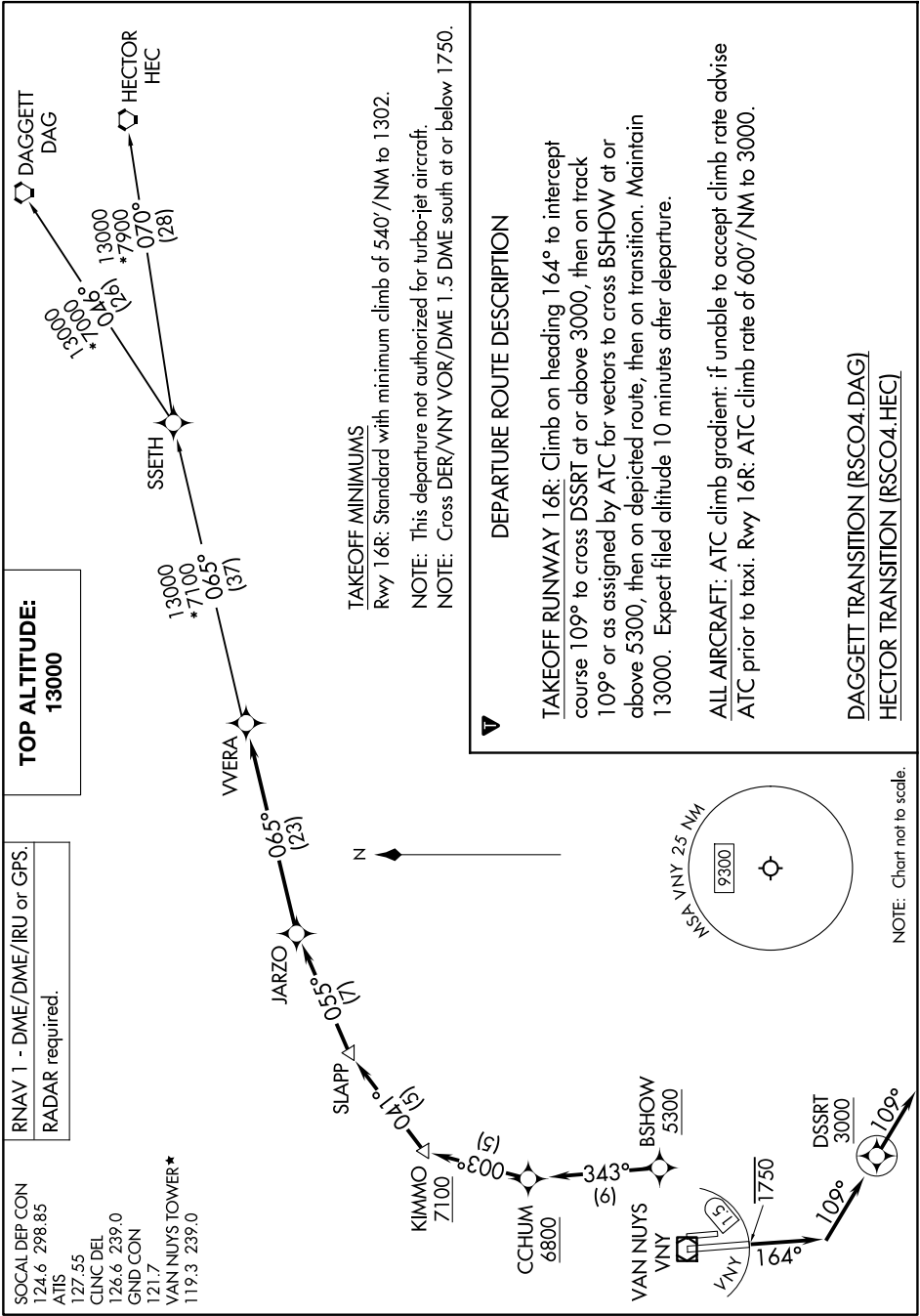


# ROSCOE FOUR DEPARTURE (RNAV)

AL-552 (FAA)

VAN NUYS (VNY)  
VAN NUYS, CALIFORNIA

SW-3, 19 MAR 2026 to 16 APR 2026



RNAV 1 - DME/DME/IRU or GPS.  
RADAR required.

SOCAL DEP CON  
124.6 298.85  
ATIS  
127.55  
CLINC DEL  
126.6 239.0  
GNID CON  
121.7  
VAN NUYS TOWER\*  
119.3 239.0

# ROSCOE FOUR DEPARTURE (RNAV)

(RSCO4.VERA) 20FEB25

VAN NUYS, CALIFORNIA  
VAN NUYS (VNY)

**TOP ALTITUDE:**  
**13000**

**TAKEOFF MINIMUMS**  
Rwy 16R: Standard with minimum climb of 540'/NM to 1302.  
**NOTE:** This departure not authorized for turbo-jet aircraft.  
**NOTE:** Cross DER/VNY VOR/DME 1.5 DME south at or below 1750.

### DEPARTURE ROUTE DESCRIPTION

**TAKEOFF RUNWAY 16R:** Climb on heading 164° to intercept course 109° to cross DSSRT at or above 3000, then on track 109° or as assigned by ATC for vectors to cross BSHOW at or above 5300, then on depicted route, then on transition. Maintain 13000. Expect filed altitude 10 minutes after departure.

**ALL AIRCRAFT:** ATC climb gradient: if unable to accept climb rate advise ATC prior to taxi. Rwy 16R: ATC climb rate of 600'/NM to 3000.

**DAGGETT TRANSITION (RSCO4.DAG)**  
**HECTOR TRANSITION (RSCO4.HEC)**

NOTE: Chart not to scale.

SW-3, 19 MAR 2026 to 16 APR 2026