

SW-3, 19 MAR 2026 to 16 APR 2026

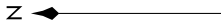
SOCAL DEP CON
134.2 338.2
CLNC DEL
126.6 239.0
CPDLC

NOTE: DME/DME/IRU or GPS required.

NOTE: RNAV 1.

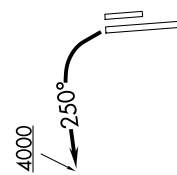
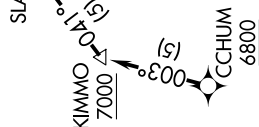
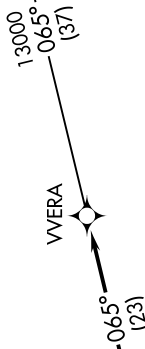
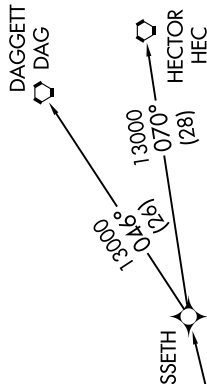
NOTE: RADAR required.

NOTE: This departure procedure authorized for turboprop aircraft only.



TAKEOFF MINIMUMS
Rwys 16L/R, 34R: NA-ATC.
Rwy 34L: Standard with minimum climb of 370' per NM to 7100.

TOP ALTITUDE:
13000



NOTE: Chart not to scale.

DEPARTURE ROUTE DESCRIPTION

TAKEOFF RUNWAY 34L: Climbing left turn heading 250° to 4000, expect vectors to cross CCHUM at or above 6800, then on track 003° to cross KIMMO at or above 7000, then on depicted route to WVERA, thence

. . . . on (transition). Maintain 13000. Expect filed altitude 10 minutes after departure.

DAGGETT TRANSITION (WVERA2.DAG)

HECTOR TRANSITION (WVERA2.HEC)

SW-3, 19 MAR 2026 to 16 APR 2026