

(WLKKR5.WLKKR) 25051

WLKKR FIVE DEPARTURE (RNAV)

AL-552 (FAA)

VAN NUYS (VNY)
VAN NUYS, CALIFORNIA

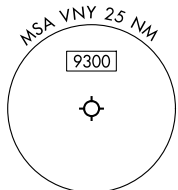
SOCAL DEP CON
134.2 338.2
ATIS
127.55
CLNC DEL
126.6 239.0
GND CON
121.7
VAN NUYS TOWER*
119.3 239.0

RNAV 1 - DME/DME/IRU or GPS.
RADAR required.

**TOP ALTITUDE:
FL230**

TAKEOFF MINIMUMS

Rwy 16R: Standard with minimum climb of 500'/NM to 1302 then minimum climb of 420'/NM to 2600.



NOTE: Maintain at or below 250K unless otherwise directed by ATC.

NOTE: Turbojet only.

NOTE: Cross DER/VNY VOR/DME 1.5 DME south at or below 1750.

NOTE: OROSZ Transition for Bakersfield area arrivals only.

NOTE: Chart not to scale.

DEPARTURE ROUTE DESCRIPTION

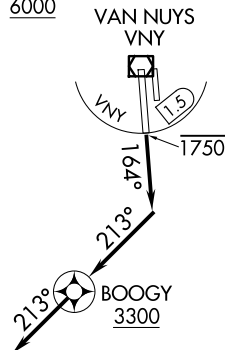
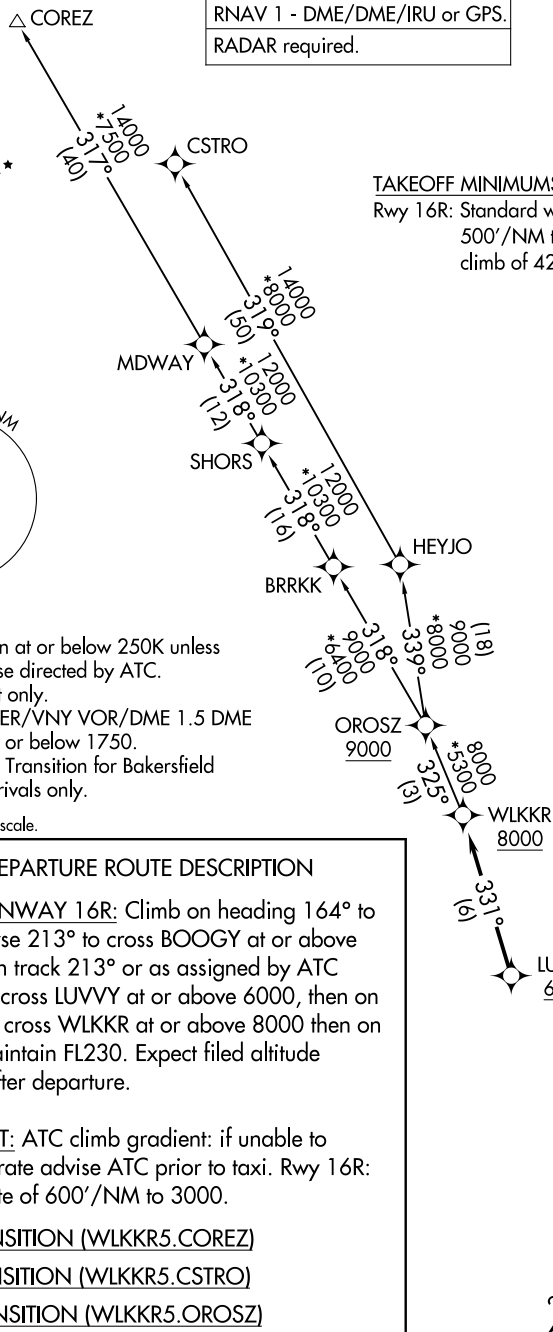
TAKEOFF RUNWAY 16R: Climb on heading 164° to intercept course 213° to cross BOOGY at or above 3300, then on track 213° or as assigned by ATC for vectors to cross LUVVY at or above 6000, then on track 331° to cross WLKKR at or above 8000 then on transition. Maintain FL230. Expect filed altitude 10 minutes after departure.

ALL AIRCRAFT: ATC climb gradient: if unable to accept climb rate advise ATC prior to taxi. Rwy 16R: ATC climb rate of 600'/NM to 3000.

COREZ TRANSITION (WLKKR5.COREZ)

CSTRO TRANSITION (WLKKR5.CSTRO)

OROSZ TRANSITION (WLKKR5.ROSZ)



SW-3, 19 MAR 2026 to 16 APR 2026

SW-3, 19 MAR 2026 to 16 APR 2026

WLKKR FIVE DEPARTURE (RNAV)

(WLKKR5.WLKKR) 20FEB25

VAN NUYS, CALIFORNIA
VAN NUYS (VNY)