

LOC/DME I-VIS 108.5 Chan 22	APP CRS 301°	Rwy Ldg TDZE Apt Elev	5635 293 293
--	------------------------	-----------------------------	---

ILS or LOC RWY 30

VISALIA MUNI (VIS)

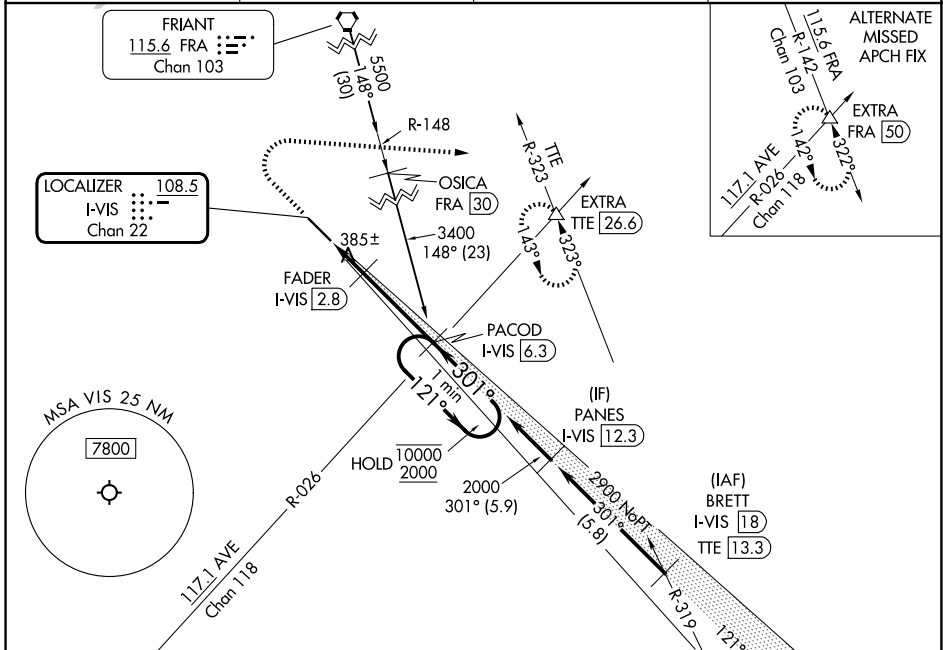
DME required.

▼ For inop ALS, increase S-LOC 30
▲ Cat C/D visibility to 1 SM.

MALSR

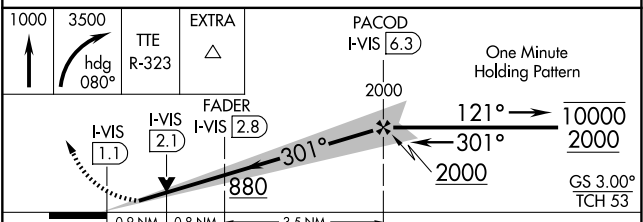
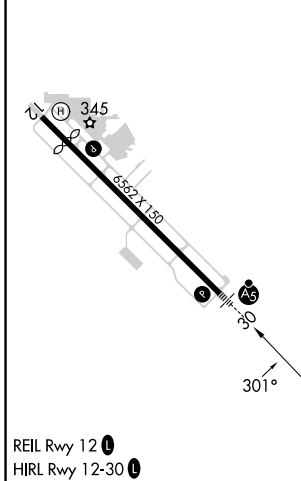
MISSED APPROACH: Climb to 1000 then climbing right turn to 3500 on heading 080° and on TTE VOR/DME R-323 to EXTRA INT/TTE 26.6 DME and hold, continue climb-in-hold to 3500.

AWOS-3PT 119.925	FRESNO APP CON 118.5	CLNC DEL 118.5	UNICOM 123.05 (CTAF)
----------------------------	--------------------------------	--------------------------	--------------------------------



ELEV 293	D	TDZE 293
----------	----------	----------

Procedure NA for arrivals at TTE VOR/DME on V165-459 southeast bound.



CATEGORY	A	B	C	D
S-ILS 30	500-½ 207 (300-½)			
S-LOC 30	640-½ 347 (400-½)	640-⅝ 347 (400-⅝)		
CIRCLING	740-1 447 (500-1)	760-1 467 (500-1)	760-1½ 467 (500-1½)	940-2 647 (700-2)