

25219

# JEFNSN TWO DEPARTURE (RNAV) (JEFNSN2.JEFNSN)

JOINT BASE ANDREWS (ANDREWS AFB) (KADW)  
CAMP SPRINGS, MARYLAND

ATIS 133.675 251.05

RNAV1-GPS

[USAF]

**TOP ALTITUDE:**

RADAR required

**3000**

GND CON  
121.8 275.8

ANDREWS TOWER

118.4 349.0

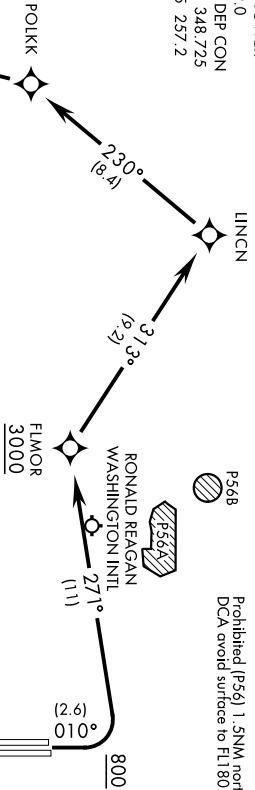
POTOMAC DEP CON  
(E) 125.65 348.725

(W) 118.95 257.2



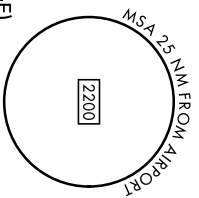
P568

Max 250 KIAS until JEFNSN  
Prohibited (P56) 1.5NM north of  
DCA avoid surface to FL800.



## TURBOJETS ONLY

(Page 1 of 2)  
(TRANSITIONS CONTINUED ON THE FOLLOWING PAGE)



### DEPARTURE ROUTE DESCRIPTION

▶ TAKEOFF RWY 1L/R: Climb on heading 010° to 800, then climbing left turn to 3000 direct FLMOR. Then via depicted route to JEFNSN, hence...

TAKEOFF RWY 19L/R: Climb direct TYLER then via depicted route to JEFNSN, hence...

... on assigned transition. Maintain 3000, expect further clearance to filed alt within ten (10) minutes after departure.

- FLASK TRANSITION (JEFNSN2.FLASK)
- GLANC TRANSITION (JEFNSN2.GLANC)
- MAULS TRANSITION (JEFNSN2.MAULS)
- MELTN TRANSITION (JEFNSN2.MELTN)
- RRSIN TRANSITION (JEFNSN2.RRSIN)

### JEFNSN TWO DEPARTURE (RNAV) (JEFNSN2.JEFNSN)

Orig 31OCT24

CAMP SPRINGS, MARYLAND  
JOINT BASE ANDREWS (ANDREWS AFB) (KADW)

25219

# JEFNSN TWO DEPARTURE (RNAV) (JEFNSN2.JEFNSN)

JOINT BASE ANDREWS (ANDREWS AFB) (KADW)  
CAMP SPRINGS, MARYLAND

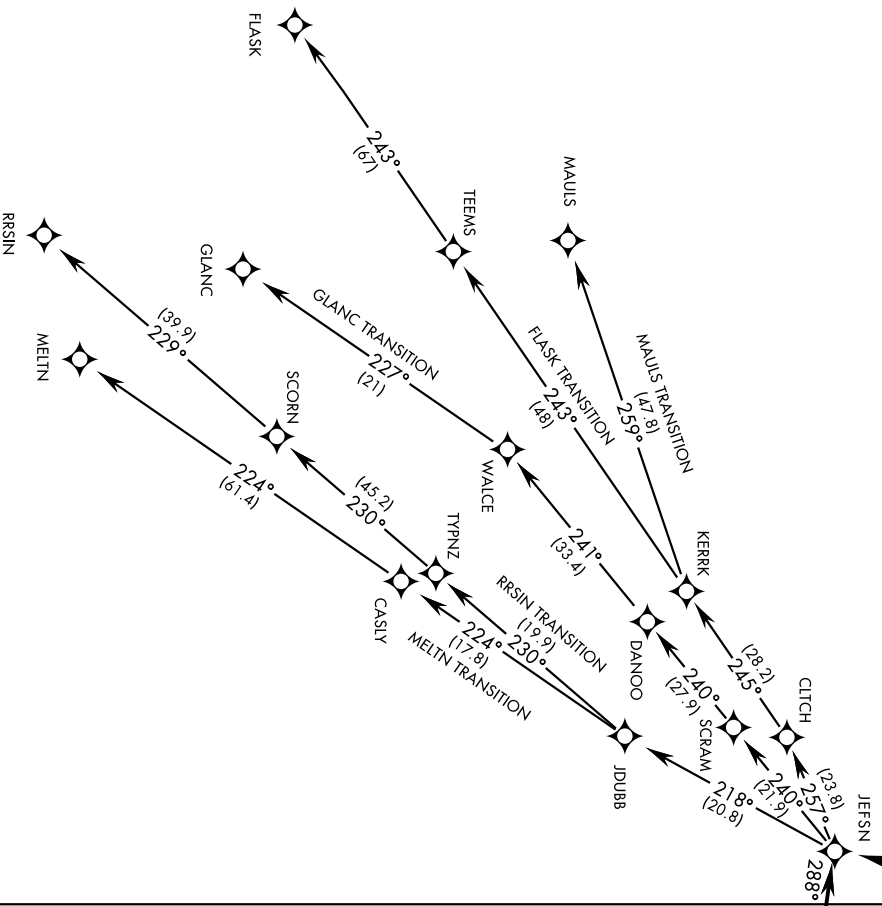
**TOP ALTITUDE:**

**3000**

RNAV1-GPS

RADAR required

[USAF]



NE-3, 19 MAR 2026 to 16 APR 2026

## TURBOJET ONLY

(Page 2 of 2)

NOTE: Chart not to scale

# JEFNSN TWO DEPARTURE (RNAV) (JEFNSN2.JEFNSN)

Orig 31OCT24

CAMP SPRINGS, MARYLAND  
JOINT BASE ANDREWS (ANDREWS AFB) (KADW)