

# VUDOO TWO ARRIVAL (RNAV) Transition Routes

POTOMAC APP CON  
126.4 282.375  
D-ATIS  
133.675 251.05  
TOWER  
118.4 349.0

See following page  
for arrival routes

VUDOO  
9000

R-6611A & B

R-6613A

R-6601A

R-6601A  
R-6601B  
R-6601C

9000  
\*1500  
045°  
(10)

TRUKK  
9000  
\*1500  
078°  
(16)

R-4006

9000  
\*1500  
078°  
(16)

BEEVR  
12000

6 NM  
218°  
(210K)

GOLOE  
13000

10 NM  
211°  
(10)

- NOTE: RADAR required.
- NOTE: RNAV 1.
- NOTE: DME/DME/IRU or GPS required.
- NOTE: P56 area A/B 1.5 NM north of DCA, avoid surface to 18000 MSL.

11000  
\*2000  
030°  
(10)

HANKC

10 NM  
190°  
(230K)

VIIPR

13000  
\*1600  
010°  
(26)

CIBAC

13000  
\*2000  
022°  
(16)

THHMP

(CONTINUED ON FOLLOWING PAGE)

BEEVR TRANSITION (BEEVR.VUDOO2): (ATC assigned only).  
 CIBAC TRANSITION (CIBAC.VUDOO2)  
 THHMP TRANSITION (THHMP.VUDOO2)

NOTE: Chart not to scale.

NE-3, 19 MAR 2026 to 16 APR 2026

NE-3, 19 MAR 2026 to 16 APR 2026

# VUDOO TWO ARRIVAL (RNAV) Transition Routes

(VUDOO.VUDOO2) 25219

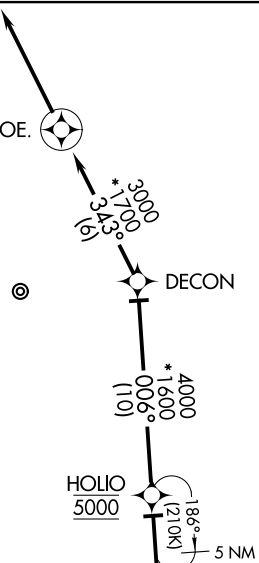
AL-561

JOINT BASE ANDREWS (KADW)  
CAMP SPRINGS, MARYLAND

# VUDOO TWO ARRIVAL (RNAV) Arrival Routes

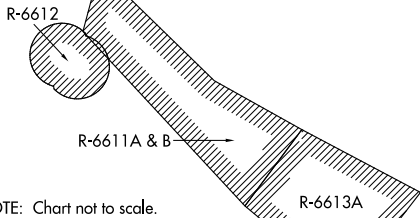
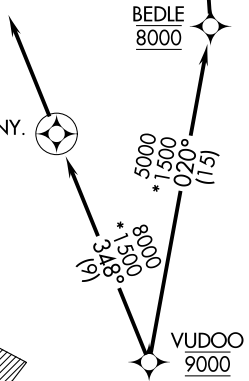
POTOMAC APP CON  
126.4 282.375  
D-ATIS  
133.675 251.05  
TOWER  
118.4 349.0

**REVOE**  
Landing south: Rwy 19L/R:  
Expect RADAR vectors to  
final approach course after REVOE.



- NOTE: RADAR required.
- NOTE: RNAV 1.
- NOTE: DME/DME/IRU or GPS required.
- NOTE: P56 area A/B 1.5 NM north of DCA, avoid surface to 18000 MSL.

**FUNNY**  
Landing north: Rwy 1L/R:  
Expect RADAR vectors to  
final approach course after FUNNY.  
8000



NOTE: Chart not to scale.

## ARRIVAL ROUTE DESCRIPTION

**LANDING NORTH RWYS 1L/R:** From VUDOO on track 348° to cross FUNNY at 8000, then on track 348°. Expect RADAR vectors to final approach course.

**LANDING SOUTH RWYS 19L/R:** From VUDOO on track 020° to cross BEDLE at 8000, then on track 006° to cross HOLIO at 5000, then on track 006° to DECON, then on track 343° to REVOE, then on track 343°. Expect RADAR vectors to final approach course.

# VUDOO TWO ARRIVAL (RNAV) Arrival Routes

CAMP SPRINGS, MARYLAND  
JOINT BASE ANDREWS (KADW)

(VUDOO.VUDOO2) 10DEC15

NE-3, 19 MAR 2026 to 16 APR 2026

NE-3, 19 MAR 2026 to 16 APR 2026