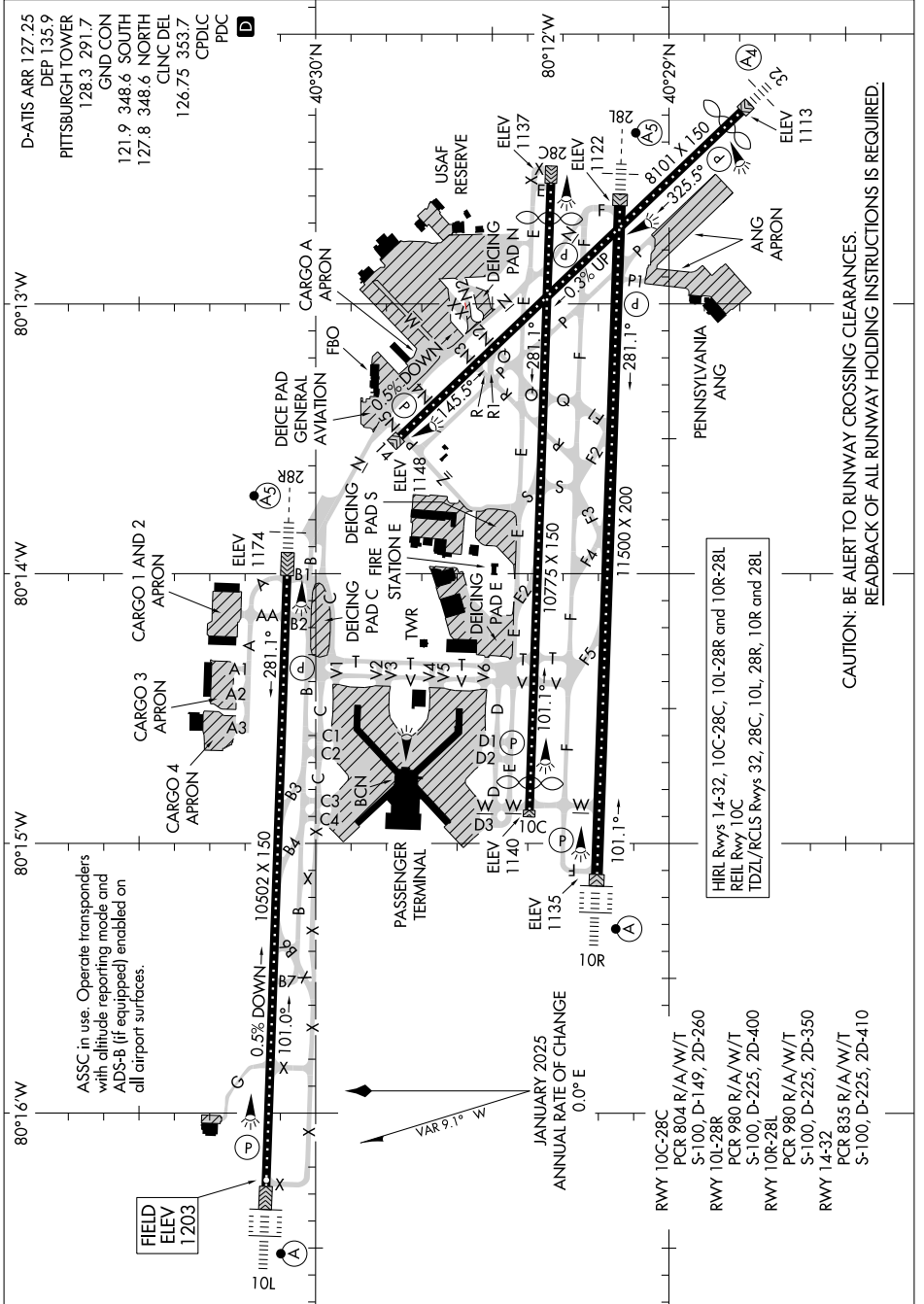


# AIRPORT DIAGRAM

AL-570 (FAA)

PITTSBURGH INTL (PIT)  
PITTSBURGH, PENNSYLVANIA

NE-4, 19 MAR 2026 to 16 APR 2026



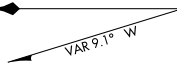
ASSC in use. Operate transponders with altitude reporting mode and ADS-B (if equipped) enabled on all airport surfaces.

FIELD ELEV 1203

HIRL Rwy 14-32, 10C-28C, 10L-28R and 10K-28L  
REIL Rwy 10C  
TDZL/RCLS Rwys 32, 28C, 10L, 28R, 10R and 28L

- RWY 10C-28C  
PCR 804 R/A/W/T  
S-100, D-149, 2D-260
- RWY 10L-28R  
PCR 980 R/A/W/T  
S-100, D-225, 2D-400
- RWY 10R-28I  
PCR 980 R/A/W/T  
S-100, D-225, 2D-350
- RWY 10R-28J  
PCR 835 R/A/W/T  
S-100, D-225, 2D-410

JANUARY 2025  
ANNUAL RATE OF CHANGE  
0.0° E



CAUTION: BE ALERT TO RUNWAY CROSSING CLEARANCES.  
READBACK OF ALL RUNWAY HOLDING INSTRUCTIONS IS REQUIRED.

# AIRPORT DIAGRAM

PITTSBURGH, PENNSYLVANIA  
PITTSBURGH INTL (PIT)

NE-4, 19 MAR 2026 to 16 APR 2026