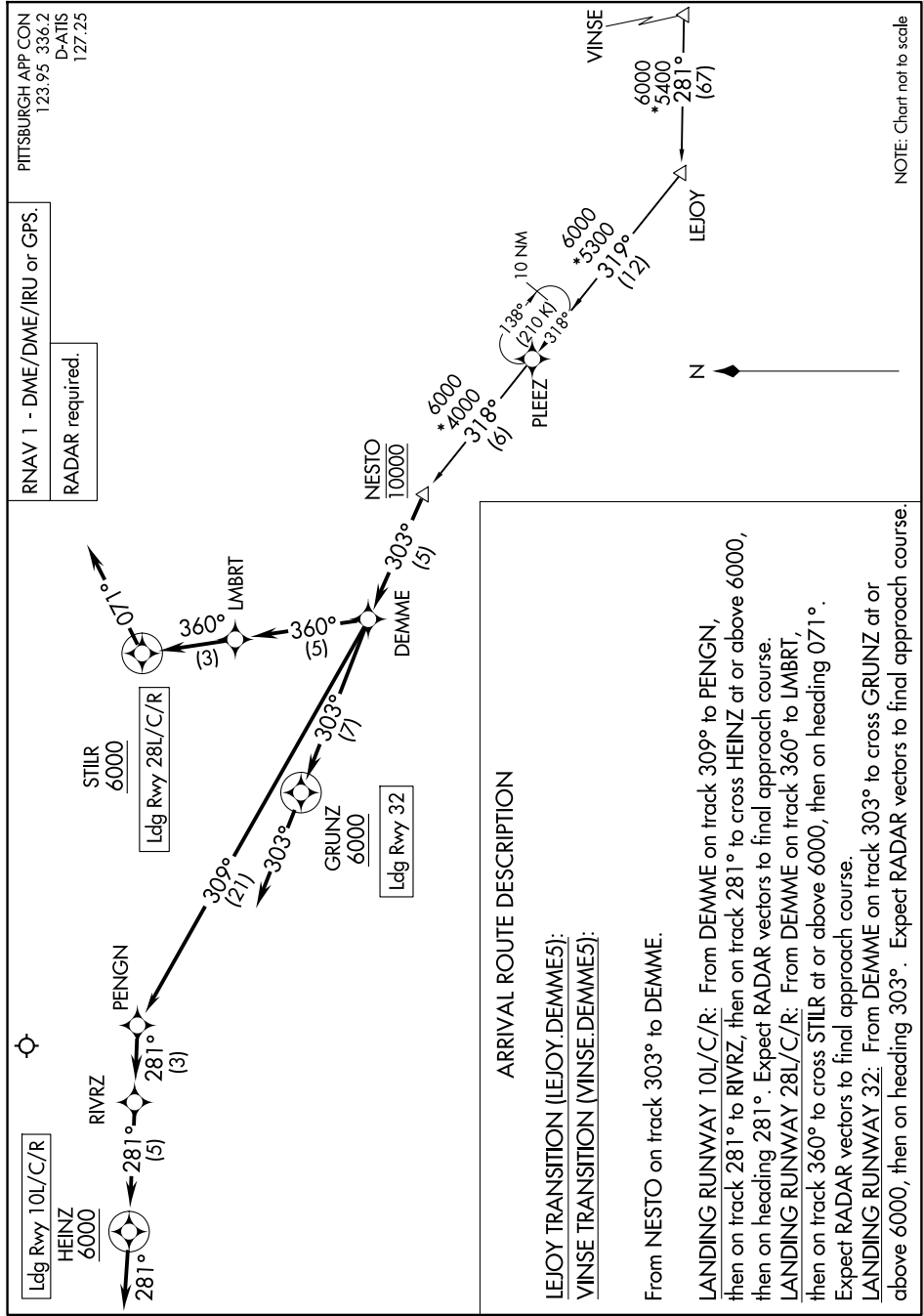


# DEMME FIVE ARRIVAL (RNAV)

PITTSBURGH INTL (PIT)  
PITTSBURGH, PENNSYLVANIA

NE-4, 19 MAR 2026 to 16 APR 2026



NOTE: Chart not to scale

### ARRIVAL ROUTE DESCRIPTION

LEJOY TRANSITION (LEJOY.DEMME5):  
VINSE TRANSITION (VINSE.DEMME5):

From NESTO on track 303° to DEMME.  
 LANDING RUNWAY 10L/C/R: From DEMME on track 309° to PENG, then on track 281° to RIVRZ, then on track 281° to cross HEINZ at or above 6000, then on heading 281°. Expect RADAR vectors to final approach course.  
 LANDING RUNWAY 28L/C/R: From DEMME on track 360° to LMBRT, then on track 360° to cross STILLR at or above 6000, then on heading 071°. Expect RADAR vectors to final approach course.  
 LANDING RUNWAY 32: From DEMME on track 303° to cross GRUNZ at or above 6000, then on heading 303°. Expect RADAR vectors to final approach course.

# DEMME FIVE ARRIVAL (RNAV)

NE-4, 19 MAR 2026 to 16 APR 2026