

(CUTTA.JESEY5) 24361

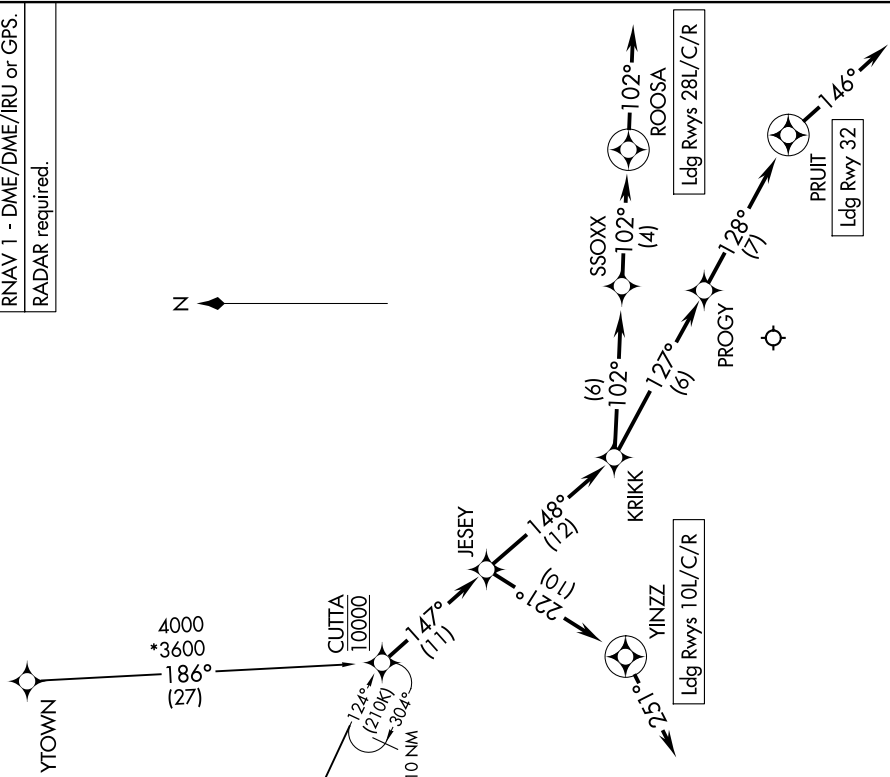
AL-570 (FAA)

PITTSBURGH INTL (PIT)
PITTSBURGH, PENNSYLVANIA

JESEY FIVE ARRIVAL (RNAV)

RNAV 1 - DME/DME/IRU or GPS.
RADAR required.

NE-4, 19 MAR 2026 to 16 APR 2026



NOTE: Chart not to scale.

ARRIVAL ROUTE DESCRIPTION

GRVY TRANSITION (GRVY.JESEY5)
YTOWN TRANSITION (YTOWN.JESEY5)

From CUTTA on track 147° to JESY.

LANDING RUNWAYS 10L/C/R: From JESY on track 221° to YINZZ, then on heading 251°. Expect RADAR vectors to final approach course.

LANDING RUNWAYS 28L/C/R: From JESY on track 148° to KRIKK, then on track 102° to SSOXX, then on track 102° to ROOSA, then on heading 102°. Expect RADAR vectors to final approach course.

LANDING RUNWAY 32: From JESY on track 148° to KRIKK, then on track 127° to PROGY, then on track 128° to PRUIT, then on heading 146°. Expect RADAR vectors to final approach course.

JESEY FIVE ARRIVAL (RNAV)

(CUTTA.JESEY5) 26DEC24

PITTSBURGH, PENNSYLVANIA
PITTSBURGH INTL (PIT)

NE-4, 19 MAR 2026 to 16 APR 2026