

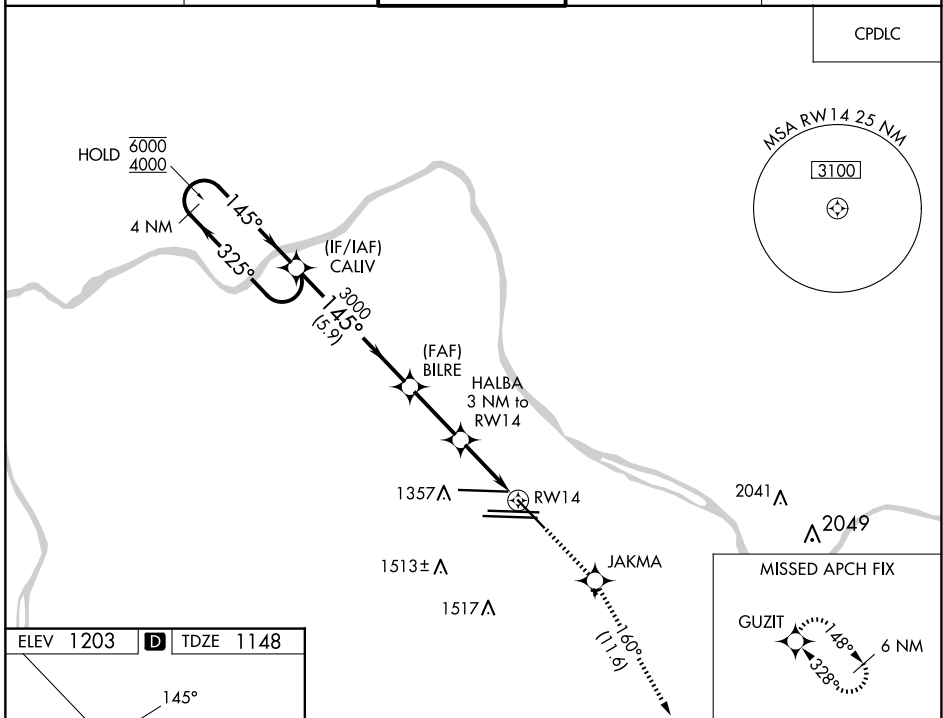
| | | | |
|--|------------------------|-----------------------------|---|
| WAAS CH 77526 W14A | APP CRS 145° | Rwy Ldg TDZE Apt Elev | 7366 1148 1203 |
|--|------------------------|-----------------------------|---|

RNAV (GPS) RWY 14

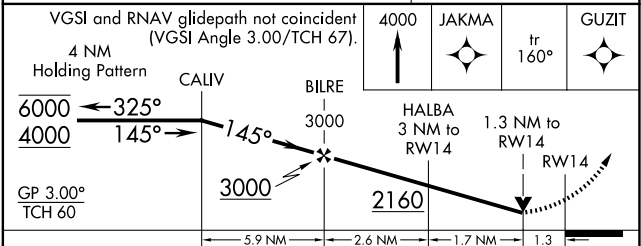
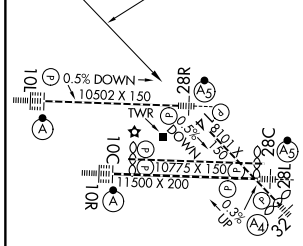
PITTSBURGH INTL (PIT)

| | | | | |
|--|---|--|---|---------------------------------|
| RNP APCH - GPS. | | MISSED APPROACH: Climb to 4000 direct JAKMA and on track 160° to GUZIT and hold. | | |
| ⚠ Rwy 14 helicopter visibility reduction below RVR 4000 NA. For uncompensated Baro-VNAV systems, procedure NA below -17°C or above 54°C. | | | | |
| D-ATIS ARR 127.25 DEP 135.9 | PITTSBURGH APP CON 123.95 360.8 | PITTSBURGH TOWER 128.3 291.7 | GND CON SOUTH 121.9 348.6 NORTH 127.8 348.6 | CLNC DEL 126.75 353.7 |

CPDLC



| | | |
|-----------|----------|-----------|
| ELEV 1203 | D | TDZE 1148 |
|-----------|----------|-----------|



| CATEGORY | A | B | C | D |
|-------------------|---------|-------------|-----------------------|-------------------------------|
| LPV DA | | 1655-1 3/8 | 507 (500-1 3/8) | |
| LNAV/VNAV DA | | 1654-1 3/8 | 506 (500-1 3/8) | |
| LNAV MDA | 1640/55 | 492 (500-1) | 1640-1 3/8 | 492 (500-1 3/8) |
| C CIRCLING | 1700-1 | 497 (500-1) | 1880-2 677 (700-2) | 1880-2 1/4 677 (700-2 1/4) |

REIL Rwy 10C
HIRL all Rwys
TDZ/CL Rwys 10L, 10R, 28L, 28R,
28C, and 32

NE-4, 19 MAR 2026 to 16 APR 2026

NE-4, 19 MAR 2026 to 16 APR 2026