

# RNAV (RNP) Z RWY 28R

PITTSBURGH INTL (PIT)

APP CRS <b>281°</b>	Rwy Ldg TDZE Apt Elev	<b>10102</b> <b>1174</b> <b>1203</b>
------------------------	-----------------------------	--

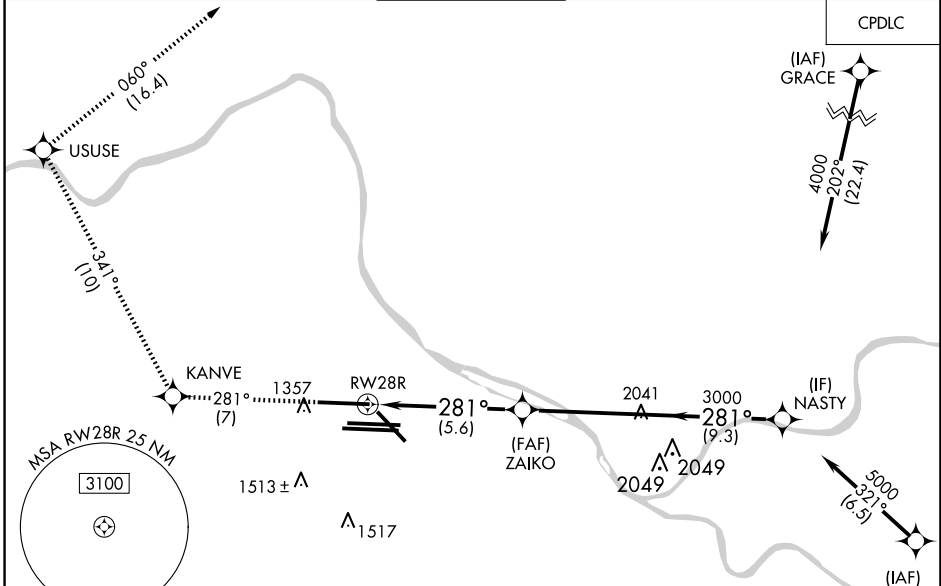
RNP AR APCH - GPS.

Simultaneous approach authorized. For uncompensated Baro-VNAV systems, procedure NA below -18°C or above 54°C. For inop ALS, increase RNP 0.30 all Cats visibility to 1 3/8 SM.

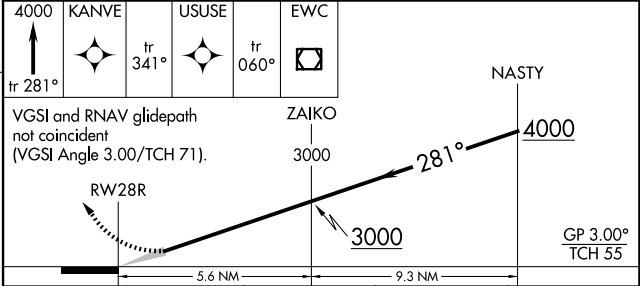
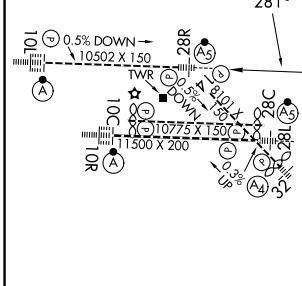
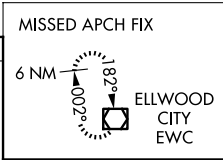
MALSR

MISSED APPROACH: Climb to 4000 on track 281° to KANVE and track 341° to USUSE and track 060° to EWC VOR/DME and hold.

D-ATIS ARR <b>127.25</b> DEP <b>135.9</b>	PITTSBURGH APP CON <b>123.95 360.8</b>	PITTSBURGH TOWER <b>128.3 291.7</b>	GND CON SOUTH <b>121.9 348.6</b> NORTH <b>127.8 348.6</b>	CLNC DEL <b>126.75 353.7</b>
---	---	--	---	---------------------------------



ELEV <b>1203</b>	<b>D</b>	TDZE <b>1174</b>
------------------	----------	------------------



REIL Rwy 10C HIRL all Rwys TDZ/CL Rwys 10L, 10R, 28L, 28R, 28C, and 32	<table border="1"> <tr> <td>4000</td> <td>KANVE</td> <td>USUSE</td> <td>EWC</td> </tr> <tr> <td>↑</td> <td>tr 281°</td> <td>tr 341°</td> <td>tr 060°</td> </tr> </table> <p>VGSI and RNAV glidepath not coincident (VGSI Angle 3.00/TCH 71).</p>	4000	KANVE	USUSE	EWC	↑	tr 281°	tr 341°	tr 060°
4000	KANVE	USUSE	EWC						
↑	tr 281°	tr 341°	tr 060°						
CATEGORY	A	B	C	D					
RNP 0.30 DA	1675/55 501 (500-1)								

## AUTHORIZATION REQUIRED

NE-4, 19 MAR 2026 to 16 APR 2026

NE-4, 19 MAR 2026 to 16 APR 2026