

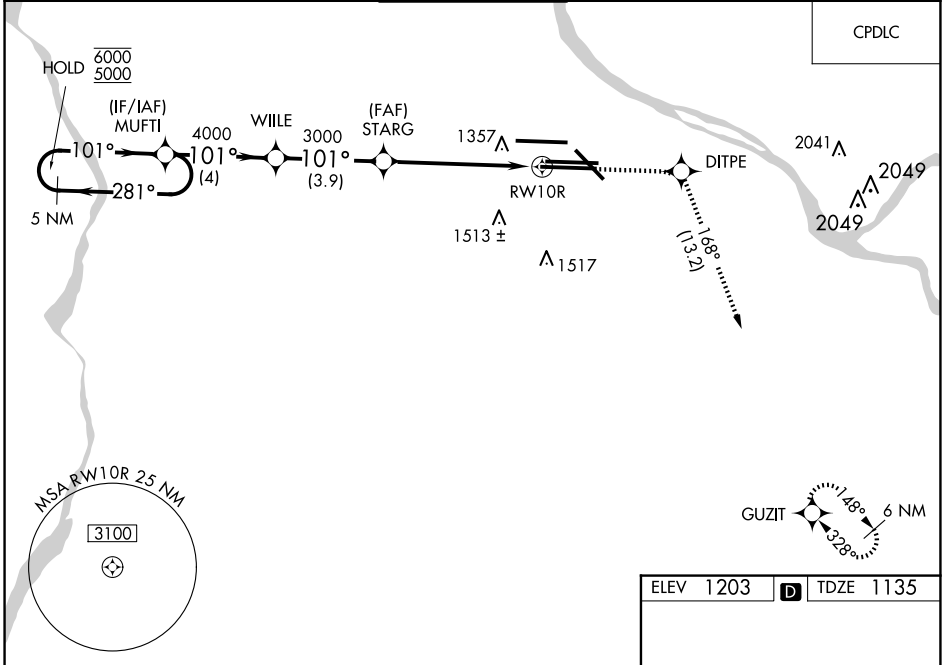
WAAS CH 86226 W10D	APP CRS 101°	Rwy Ldg TDZE 1135 Apt Elev 1203
--	------------------------	---

RNAV (GPS) Y RWY 10R

PITTSBURGH INTL (PIT)

RNP APCH - GPS.	ALSF-2	MISSED APPROACH: Climb to 4000 direct DITPE and right turn on track 168° to GUZIT and hold.
<p>▼ For uncompensated Baro-VNAV systems, LNAV/VNAV NA below -17°C or above 54°C. Simultaneous approach authorized. LNAV procedure NA during simultaneous operations. Use of FD or AP required during simultaneous operations.</p>		

D-ATIS ARR 127.25 DEP 135.9	PITTSBURGH APP CON 123.95 360.8	PITTSBURGH TOWER 128.3 291.7	GND CON SOUTH 121.9 348.6 NORTH 127.8 348.6	CLNC DEL 126.75 353.7
---	---	--	---	---------------------------------

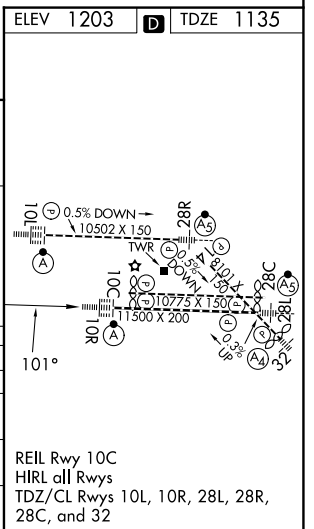


5 NM Holding Pattern

VGSI and RNAV glidepath not coincident (VGSI Angle 3.00/TCH 71).

6000 ← 281°	5000 → 101°	4000	3000	3000	1.4 NM to RW10R
GP 3.00° TCH 51					
	4 NM	3.9 NM	4.3 NM	1.4 NM	

CATEGORY	A	B	C	D
LPV DA		1335/18	200 (200-1/2)	
LNAV/ VNAV DA		1658/55	523 (500-1)	
LNAV MDA	1660/24	525 (500-1/2)	1660/55	525 (500-1)
CIRCLING	1700-1	497 (500-1)	1880-2 677 (700-2)	1880-2 1/4 677 (700-2 1/4)



NE-4, 19 MAR 2026 to 16 APR 2026

NE-4, 19 MAR 2026 to 16 APR 2026