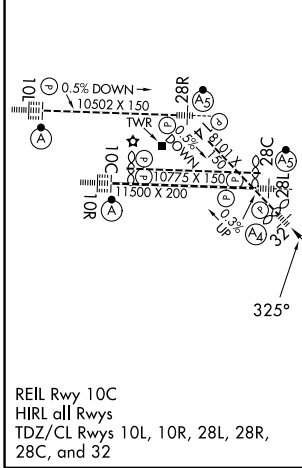
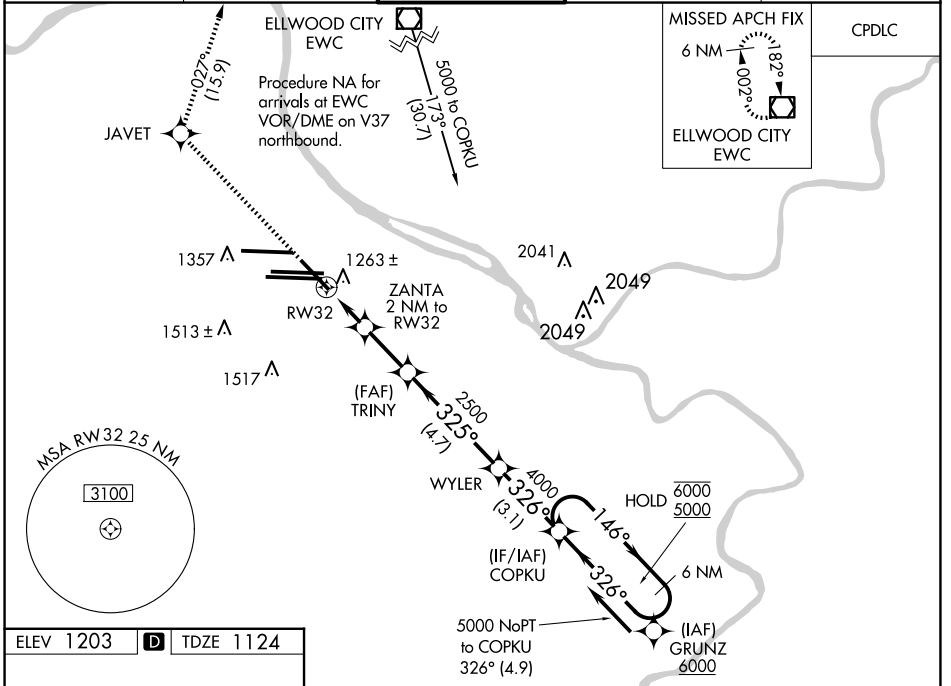


WAAS CH 70326 W32A	APP CRS 325°	Rwy Ldg TDZE Apt Elev	7466 1124 1203
--	------------------------	-----------------------------	---

RNAV (GPS) Y RWY 32

PITTSBURGH INTL (PIT')

RNP APCH - GPS.		MAL S		MISSED APPROACH: Climb to 4000 direct JAVET and on track 027° to EWC VOR/DME and hold.	
▼ For uncompensated Baro-VNAV systems, LNAV/VNAV NA below -18°C (0°F) or above 54°C (130°F). Inop table does not apply to LPV. For inop ALS, increase LNAV/VNAV all Cats visibility to RVR 4500. ▲		(A4) =			
D-ATIS ARR 127.25 DEP 135.9	PITTSBURGH APP CON 123.95 360.8	PITTSBURGH TOWER 128.3 291.7	GND CON SOUTH 121.9 348.6 NORTH 127.8 348.6	CLNC DEL 126.75 353.7	



4000	JAVET	EWC	VGSI and RNAV glidepath not coincident (VGSI Angle 3.00/TCH 72).			
↑	tr 027°		6 NM COPKU Holding Pattern			
	ZANTA 2 NM to RW32	TRINITY 2500	WYLER 4000	146° → 6000	← 326° 5000	GP 3.00° TCH 37
	1 NM to RW32	1 NM	→ 2.2 NM	→ 4.7 NM	→ 3.1 NM	
CATEGORY	A	B	C	D		
LPV DA	1324/40		200 (200-¾)			
LNAV/VNAV DA	1438/40		314 (300-¾)			
LNAV MDA	1520/40 396 (400-¾)		1520/45 396 (400-¾)			
C CIRCLING	1700-1 497 (500-1)		1880-2 677 (700-2)		1880-2 ¼ 677 (700-2 ¼)	

NE-4, 19 MAR 2026 to 16 APR 2026

NE-4, 19 MAR 2026 to 16 APR 2026