

FATHE FOUR DEPARTURE (RNAV) Departure Routes

ORLANDO DEP CON
 124.8 307.0
 D-ATIS DEP
 120.525
 CLNC DEL
 134.7 341.7
 CPDLC
 GND CON
 126.4 (E)
 121.8 (W)
 ORLANDO TOWER
 118.45 253.5 (17L-35R,17R-35L)
 124.3 253.5 (18L-36R, 18R-36L)

See following page
 for transition routes.

FATHE
 14000

TOP ALTITUDE:
 Rwy's 17L/R, 18L/R: 7000
 Rwy's 35L/R, 36L/R: 16000

RNAV 1 - DME/DME/IRU or GPS.

RADAR required.

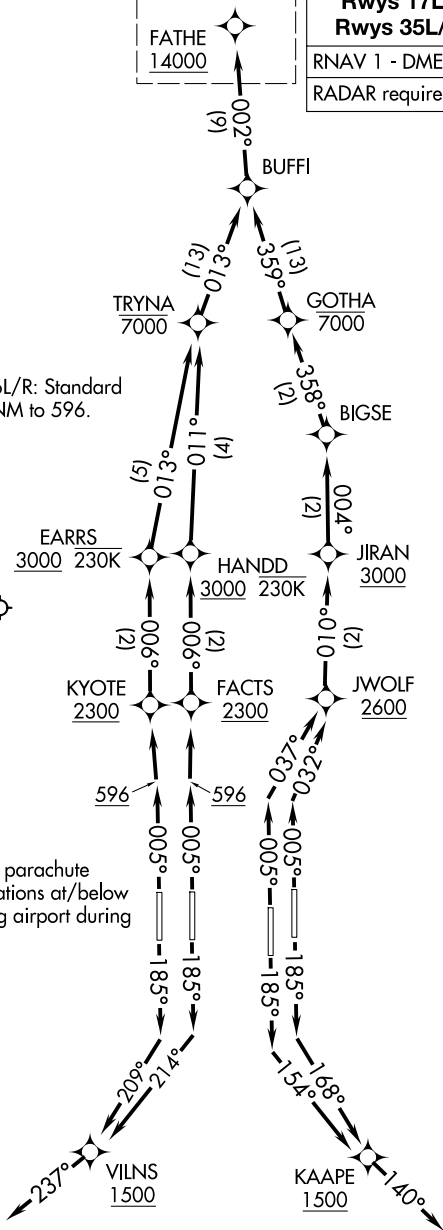
TAKEOFF MINIMUMS

Rwy's 17L/R, 18L/R, 35L/R, 36L/R: Standard
 with minimum climb of 500'/NM to 596.

SE-3, 19 MAR 2026 to 16 APR 2026

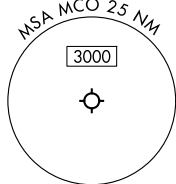
SE-3, 19 MAR 2026 to 16 APR 2026

ORLANDO EXEC



NOTE: Jet aircraft only.

NOTE: KDED airport, extensive parachute
 and flight training operations at/below
 13500. Avoid overflying airport during
 parachute operations.



(CONTINUED ON FOLLOWING PAGE)

NOTE: Chart not to scale.

FATHE FOUR DEPARTURE (RNAV) Departure Routes

(FATHE4.FATHE) 12JUN25

(FATHE4.FATHE) 25219

AL-571 (FAA)

ORLANDO INTL (MCO)

FATHE FOUR DEPARTURE (RNAV) Transition Routes

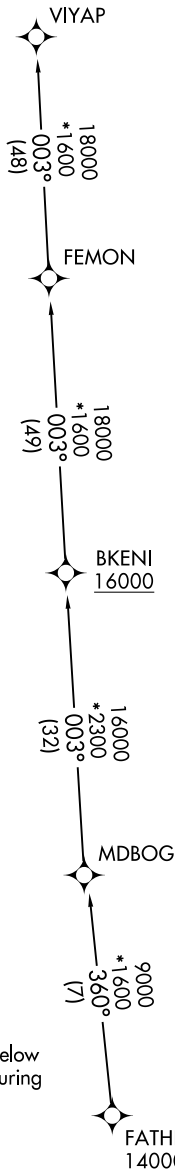
ORLANDO, FLORIDA

ORLANDO DEP CON
 124.8 307.0
 D-ATIS DEP
 120.525
 CLNC DEL
 134.7 341.7
 CPDLC
 GND CON
 126.4 (E)
 121.8 (W)
 ORLANDO TOWER
 118.45 253.5 (17L-35R, 17R-35L)
 124.3 253.5 (18L-36R, 18R-36L)

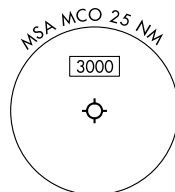
RNAV 1 - DME/DME/IRU or GPS.

RADAR required.

TOP ALTITUDE:
Rwys 17L/R, 18L/R: 7000
Rwys 35L/R, 36L/R: 16000



NOTE: Jet aircraft only.
 NOTE: KDED airport, extensive parachute and flight training operations at/below 13500. Avoid overflying airport during parachute operations.



NOTE: Chart not to scale.

(CONTINUED ON FOLLOWING PAGE)

SE-3, 19 MAR 2026 to 16 APR 2026

SE-3, 19 MAR 2026 to 16 APR 2026

FATHE FOUR DEPARTURE (RNAV) Transition Routes

(FATHE4.FATHE) 12JUN25

ORLANDO, FLORIDA
 ORLANDO INTL (MCO)

FATHE FOUR DEPARTURE (RNAV)



DEPARTURE ROUTE DESCRIPTION SEE ADDITIONAL REQUIREMENTS ON AAUP

TAKEOFF RUNWAY 17L: Climb on heading 185° to intercept course 168° to cross KAAPE at or above 1500, then on track 140°, for vectors to BUFFI, thence. . . .

TAKEOFF RUNWAY 17R: Climb on heading 185° to intercept course 154° to cross KAAPE at or above 1500, then on track 140°, for vectors to BUFFI, thence. . . .

TAKEOFF RUNWAY 18L: Climb on heading 185° to intercept course 214° to cross VILNS at or above 1500, then on track 237°, for vectors to BUFFI, thence. . . .

TAKEOFF RUNWAY 18R: Climb on heading 185° to intercept course 209° to cross VILNS at or above 1500, then on track 237°, for vectors to BUFFI, thence. . . .

TAKEOFF RUNWAY 35L: Climb on heading 005° to intercept course 037° to cross JWOLF at or above 2600, then on track 010° to cross JIRAN at or above 3000, then on track 004° to BIGSE, then on track 358° to cross GOTHA at or below 7000, then on track 359° to BUFFI, thence. . . .

TAKEOFF RUNWAY 35R: Climb on heading 005° to intercept course 032° to cross JWOLF at or above 2600, then on track 010° to cross JIRAN at or above 3000, then on track 004° to BIGSE, then on track 358° to cross GOTHA at or below 7000, then on track 359° to BUFFI, thence. . . .

TAKEOFF RUNWAY 36L: Climb on heading 005° to 596, then direct KYOTE at or above 2300, then on track 006° to cross EARRS at or above 3000 and at or below 230K, then on track 013° to cross TRYNA at or below 7000, then on track 013° to BUFFI, thence. . . .

TAKEOFF RUNWAY 36R: Climb on heading 005° to 596, then direct FACTS at or above 2300, then on track 006° to cross HANDD at or above 3000 and at or below 230K, then on track 011° to cross TRYNA at or below 7000, then on track 013° to BUFFI, thence. . . .

. . . then on track 002° to cross FATHE at or above 14000, then on transition.
RUNWAYS 17L/R, 18L/R maintain 7000, RUNWAYS 35L/R, 36L/R maintain 16000, expect filed altitude 10 minutes after departure.

ALL AIRCRAFT: ATC climb gradient: if unable to accept climb rate advise ATC prior to taxi. RUNWAY 35R: 548'/NM to 2600, RUNWAY 36L: 599'/NM to 2300, RUNWAY 36R: 589'/NM to 2300.

VIYAP TRANSITION (FATHE4.VIYAP)

SE-3, 19 MAR 2026 to 16 APR 2026

SE-3, 19 MAR 2026 to 16 APR 2026