

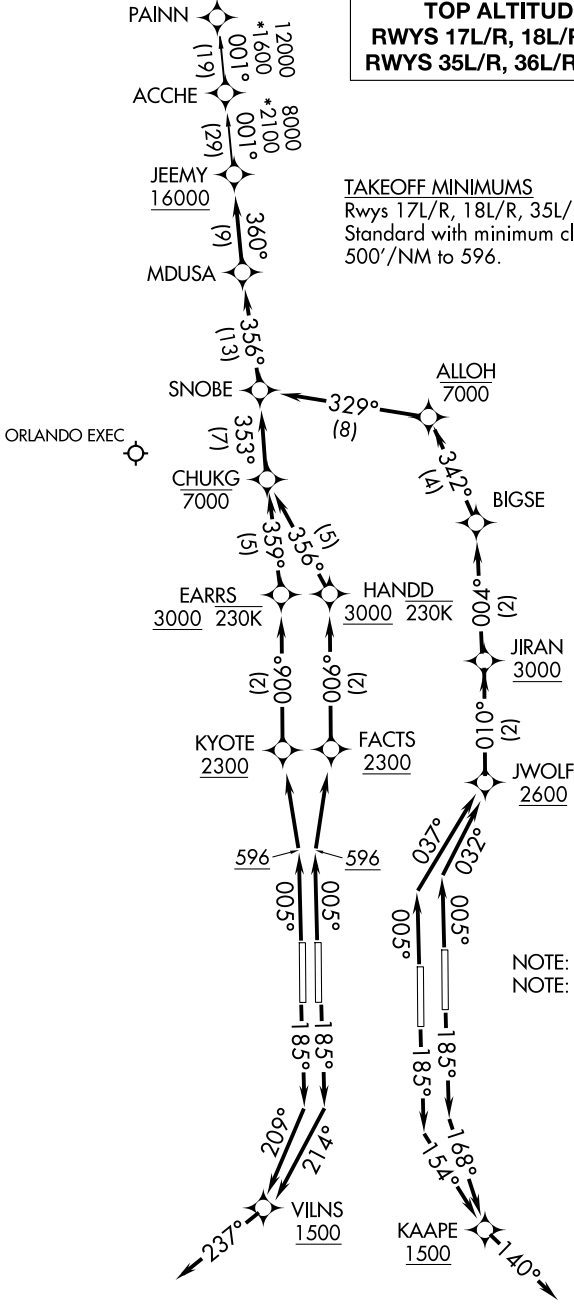
# JEEMY FOUR DEPARTURE (RNAV)

**TOP ALTITUDE:**  
**RWYS 17L/R, 18L/R: 7000**  
**RWYS 35L/R, 36L/R: 16000**

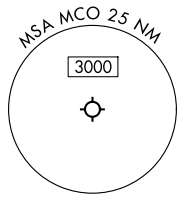
ORLANDO DEP CON  
124.8 307.0 (N)  
120.15 284.7 (S)  
D-ATIS DEP  
120.525  
CLNC DEL  
134.7 341.7  
CPDLC  
GND CON  
126.4 (E)  
121.8 (W)  
ORLANDO TOWER  
118.45 253.5  
(17L-35R, 17R-35L)  
124.3 253.5  
(18L-36R, 18R-36L)

**TAKEOFF MINIMUMS**  
Rwys 17L/R, 18L/R, 35L/R, 36L/R:  
Standard with minimum climb of  
500'/NM to 596.

RNAV 1 - DME/DME/IRU or GPS.  
RADAR required.



(CONTINUED ON FOLLOWING PAGE)



NOTE: Chart not to scale.

SE-3, 19 MAR 2026 to 16 APR 2026

SE-3, 19 MAR 2026 to 16 APR 2026

# JEEMY FOUR DEPARTURE (RNAV)



## DEPARTURE ROUTE DESCRIPTION SEE ADDITIONAL REQUIREMENTS ON AAUP

TAKEOFF RUNWAY 17L: Climb on heading 185° to intercept course 168° to cross KAAPE at or above 1500, then on track 140°, for vectors to MDUSA, thence. . . .

TAKEOFF RUNWAY 17R: Climb on heading 185° to intercept course 154° to cross KAAPE at or above 1500, then on track 140°, for vectors to MDUSA, thence. . . .

TAKEOFF RUNWAY 18L: Climb on heading 185° to intercept course 214° to cross VILNS at or above 1500, then on track 237°, for vectors to MDUSA, thence. . . .

TAKEOFF RUNWAY 18R: Climb on heading 185° to intercept course 209° to cross VILNS at or above 1500, then on track 237°, for vectors to MDUSA, thence. . . .

TAKEOFF RUNWAY 35L: Climb on heading 005° to intercept course 037° to cross JWOLF at or above 2600, then on track 010° to cross JIRAN at or above 3000, then on track 004° to BIGSE, then on track 342° to cross ALOHH at or below 7000, then on track 329° to SNOBE, then on track 356° to MDUSA, thence. . . .

TAKEOFF RUNWAY 35R: Climb on heading 005° to intercept course 032° to cross JWOLF at or above 2600, then on track 010° to cross JIRAN at or above 3000, then on track 004° to BIGSE, then on track 342° to cross ALOHH at or below 7000, then on track 329° to SNOBE, then on track 356° to MDUSA, thence. . . .

TAKEOFF RUNWAY 36L: Climb on heading 005° to 596, then direct KYOTE at or above 2300, then on track 006° to cross EARRS at or above 3000 and at or below 230K, then on track 359° to cross CHUKG at or below 7000, then on track 353° to SNOBE, then on track 356° to MDUSA, thence. . . .

TAKEOFF RUNWAY 36R: Climb on heading 005° to 596, then direct FACTS at or above 2300, then on track 006° to cross HANDD at or above 3000 and at or below 230K, then on track 356° to cross CHUKG at or below 7000, then on track 353° to SNOBE, then on track 356° to MDUSA, thence. . . .

. . . then on track 360° to cross JEEMY at or above 16000, then on transition, RUNWAYS 17L/R, 18L/R maintain 7000, RUNWAYS 35L/R, 36L/R maintain 16000, expect filed altitude 10 minutes after departure.

ALL AIRCRAFT: ATC climb gradients: If unable to accept climb rates advise ATC prior to taxi. RUNWAY 35R: 548'/NM to 2600, RUNWAY 36L: 599'/NM to 2300, RUNWAY 36R: 589'/NM to 2300.

PAINN TRANSITION (JEEMY4.PAINN)

SE-3. 19 MAR 2026 to 16 APR 2026

SE-3. 19 MAR 2026 to 16 APR 2026