

WAAS CH 65638 W23A	APP CRS 235°	Rwy Ldg TDZE 78 Apt Elev 79	5000
----------------------------------------	------------------------	-------------------------------------------------	-------------

RNAV (GPS) RWY 23

NEW BEDFORD RGNL (E/WB)

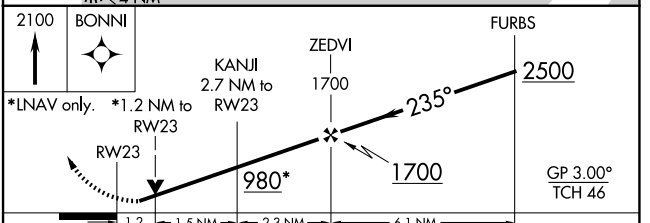
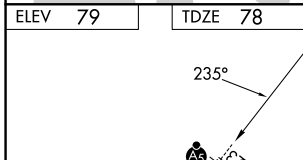
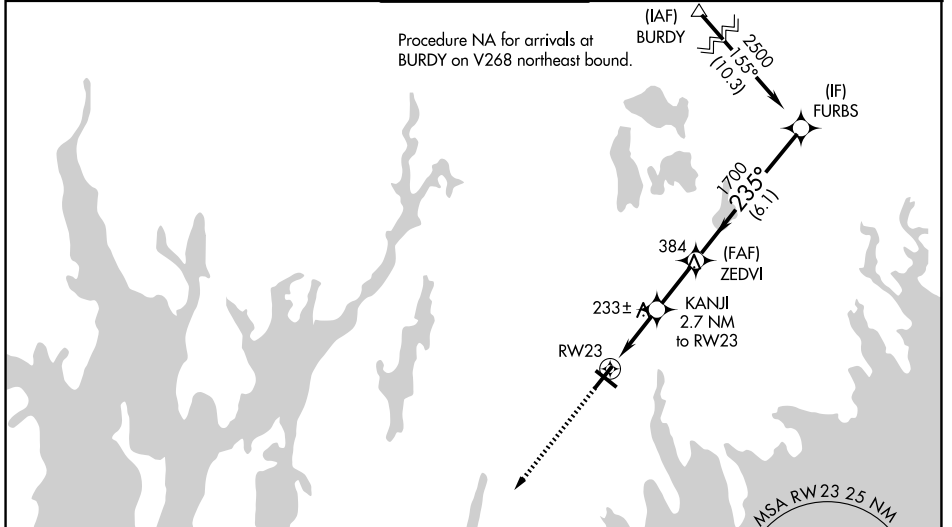
RNP APCH-GPS.

Baro-VNAV and VDP NA when using Taunton altimeter setting. For uncompensated Baro-VNAV systems, LNAV/VNAV NA below -16°C or above 54°C. Helicopter visibility reduction below ¾ SM NA. When local altimeter setting not received, use Taunton altimeter setting and increase LPV DA to 393 feet, increase LNAV/VNAV DA to 412 feet; increase all MDA 40 feet and LNAV Cats C and D and Circling Cat C visibility ¼ SM. For inop MALSR, increase LPV all Cats visibility ½ mile, LNAV/VNAV and LNAV Cat A/B visibility ¼ mile. For inop MALSR, when using Taunton altimeter setting, increase LNAV/VNAV all Cats visibility ¾ mile, LNAV Cat A/B visibility ¼ mile and Cat C/D visibility ¾ mile.

MALSR

MISSED APPROACH: Climb to 2100 direct BONNI and hold.

ATIS 126.85	PROVIDENCE APP CON* 128.7 269.525	NEW BEDFORD TOWER* 118.1 (CTAF) 239.0	GND CON 121.9	UNICOM 122.95
-----------------------	---------------------------------------------	-------------------------------------------------	-------------------------	-------------------------



CATEGORY	A		B	C	D
	LPV DA	359-¾		281 (300-¾)	
LNAV/VNAV DA	378-¾		300 (300-¾)		
LNAV MDA	500-¾		422 (500-¾)		
CIRCLING	620-1	640-1	720-1¾	960-3	
	541 (600-1)	561 (600-1)	641 (700-1¾)	881 (900-3)	

NE-1, 19 MAR 2026 to 16 APR 2026

NE-1, 19 MAR 2026 to 16 APR 2026