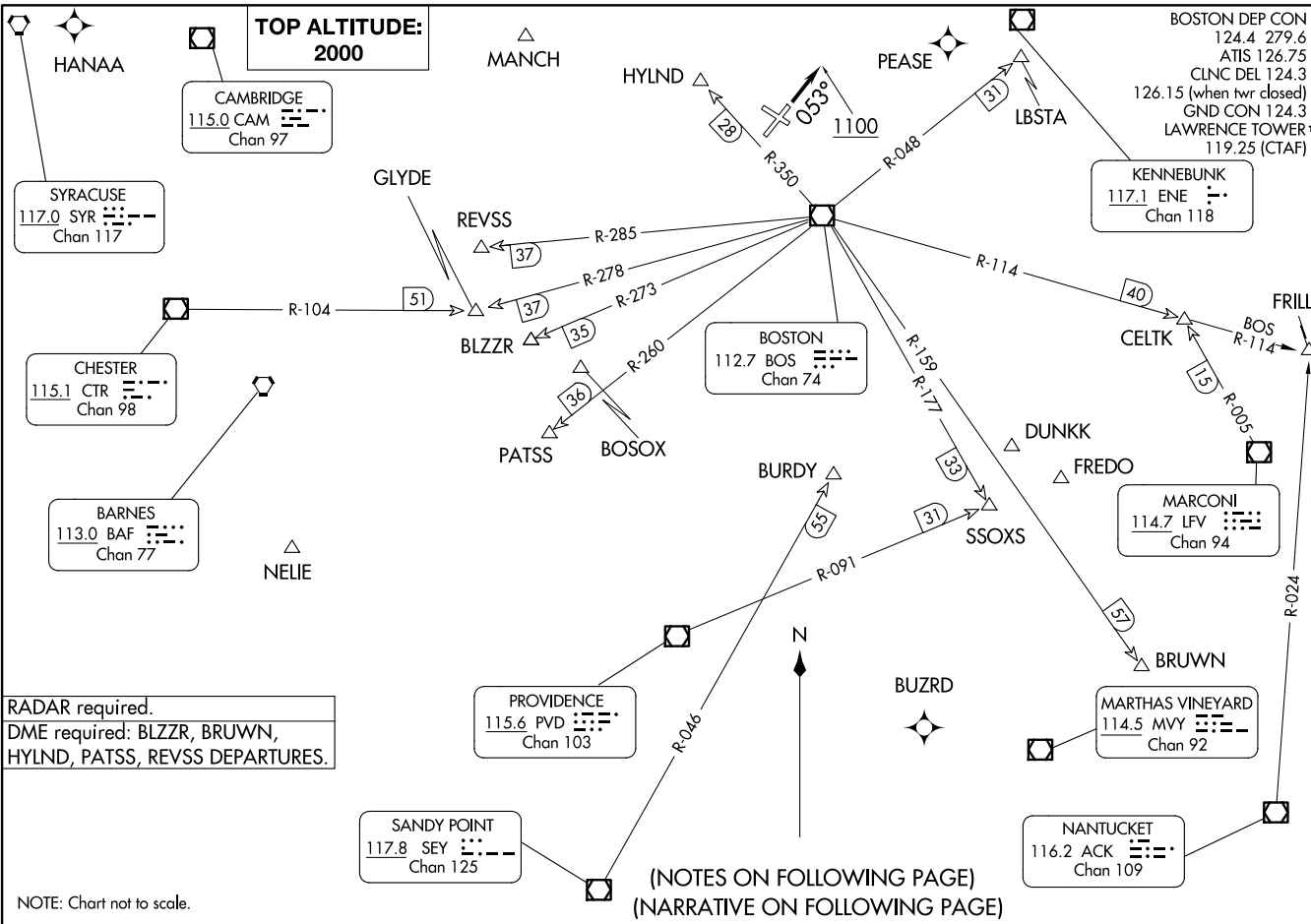


LAWRENCE TWO DEPARTURE
(LWM2.LWM) 29DEC22

(LWM2.LWM) 24193
LAWRENCE TWO DEPARTURE

AL-654 (FAA)

LAWRENCE MUNI (LWM)
LAWRENCE, MASSACHUSETTS



BOSTON DEP CON
124.4 279.6
ATIS 126.75
CLNC DEL 124.3
126.15 (when twr closed)
GND CON 124.3
LAWRENCE TOWER*
119.25 (CTAF)

**TOP ALTITUDE:
2000**

CAMBRIDGE
115.0 CAM
Chan 97

SYRACUSE
117.0 SYR
Chan 117

CHESTER
115.1 CTR
Chan 98

BARNES
113.0 BAF
Chan 77

BOSTON
112.7 BOS
Chan 74

PROVIDENCE
115.6 PVD
Chan 103

SANDY POINT
117.8 SEY
Chan 125

KENNEBUNK
117.1 ENE
Chan 118

MARCONI
114.7 LFV
Chan 94

MARTHAS VINEYARD
114.5 MVY
Chan 92

NANTUCKET
116.2 ACK
Chan 109

RADAR required.
DME required: BLZZR, BRUWN,
HYLND, PATSS, REVSS DEPARTURES.

(NOTES ON FOLLOWING PAGE)
(NARRATIVE ON FOLLOWING PAGE)

NOTE: Chart not to scale.

LAWRENCE, MASSACHUSETTS
LAWRENCE MUNI (LWM)

LAWRENCE TWO DEPARTURE



DEPARTURE ROUTE DESCRIPTION

TAKEOFF RUNWAY 5: Climb on heading 053° to 1100, then as assigned by ATC, thence....

TAKEOFF RUNWAYS 14, 23, 32: Climb on heading as assigned by ATC, thence....

....expect RADAR vectors to assigned route/navaid/fix. Maintain 2000.
Expect filed altitude/flight level 10 minutes after departure.

TAKEOFF MINIMUMS:

Rwy 5: 300-1½ or standard with minimum climb of 435' per NM to 500.

Rwy 14: 300-1 or standard with minimum climb of 625' per NM to 600.

Rwy 23: 300-1 or standard with minimum climb of 350' per NM to 400.

Rwy 32: Standard.

NOTE: Non RNAV equipped aircraft can expect vectors on assigned route.

NOTE: BLZZR DEPARTURES expect vectors on BOS R-273.

NOTE: BRUWN DEPARTURES expect vectors on BOS R-159.

NOTE: CELTK DEPARTURES expect vectors on BOS R-114.

NOTE: HYLND DEPARTURES expect vectors on BOS R-350.

NOTE: PATSS DEPARTURES expect vectors on BOS R-260.

NOTE: REVSS DEPARTURES expect vectors on BOS R-285.

NOTE: SSOXS DEPARTURES expect vectors on BOS R-177.

NE-1, 19 MAR 2026 to 16 APR 2026

NE-1, 19 MAR 2026 to 16 APR 2026