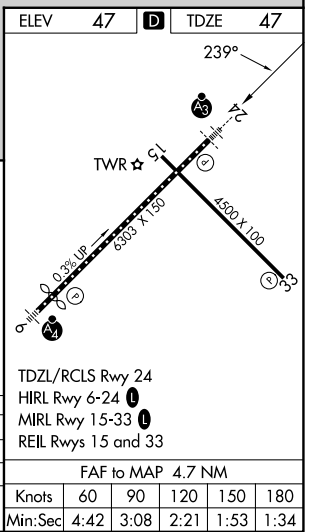
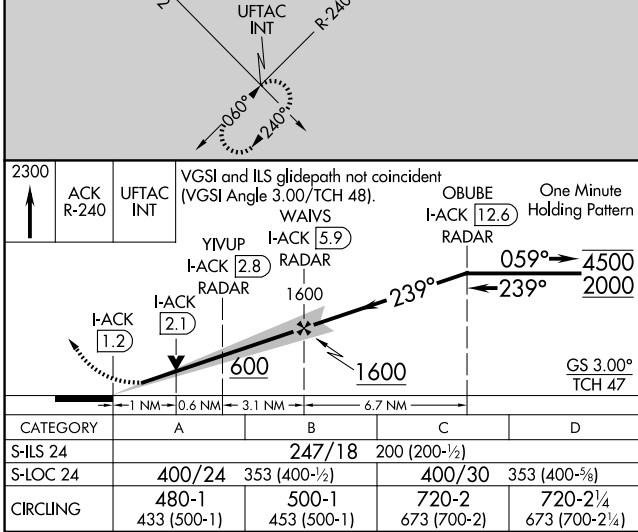
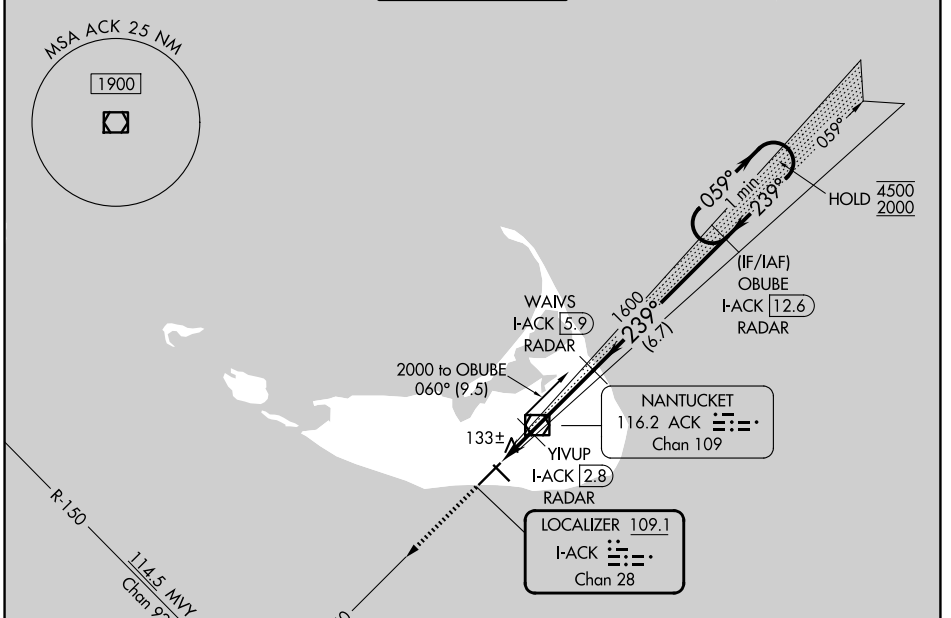


LOC/DME I-ACK 109.1 Chan 28	APP CRS 239°	Rwy Ldg TDZE Apt Elev 6303 47 47
---	------------------------	--

ILS or LOC RWY 24

NANTUCKET MEML (ACK)

DME or RADAR required.		SSALR 	MISSED APPROACH: Climb to 2300 on ACK VOR/DME R-240 to UFTAC INT and hold.	
	For inop ALS, increase S-LOC 24 Cat C and D visibilities to RVR 5500.		ATIS 127.5	BOSTON APP CON 126.1 318.1
		GND CON 132.5	UNICOM 122.95	



NE-1, 19 MAR 2026 to 16 APR 2026

NE-1, 19 MAR 2026 to 16 APR 2026