

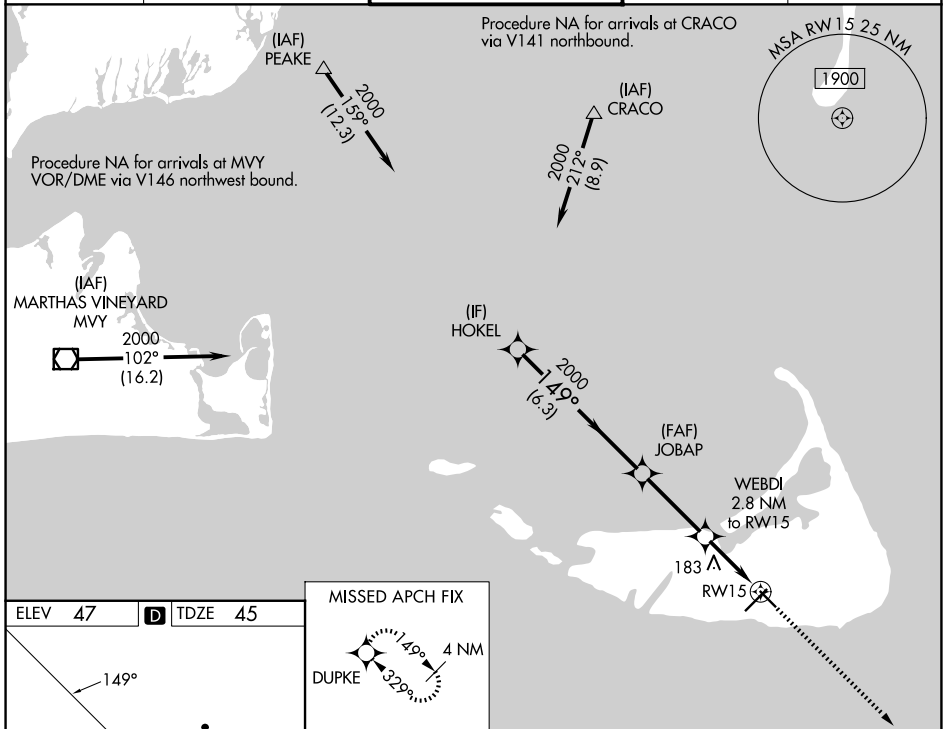
WAAS CH <b>97623</b> <b>W15A</b>	APP CRS <b>149°</b>	Rwy Ldg <b>4500</b> TDZE <b>45</b> Apt Elev <b>47</b>
--	------------------------	---

# RNAV (GPS) RWY 15

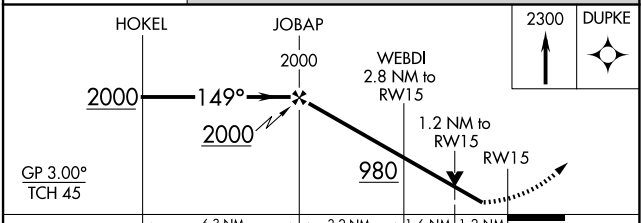
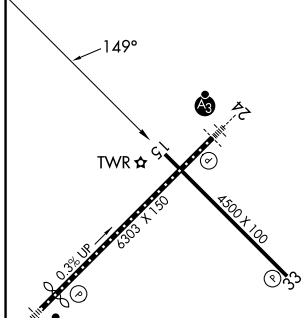
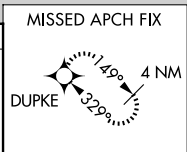
NANTUCKET MEML (ACK)

RNP APCH - GPS.		MISSED APPROACH: Climb to 2300 direct DUPKE and hold.
<p><b>▼</b> Rwy 15 helicopter visibility reduction below 3/4 SM NA. For uncompensated Baro-VNAV systems, LNAV/VNAV NA below -12°C or above 54°C.</p>		

ATIS <b>127.5</b>	BOSTON APP CON <b>126.1 318.1</b>	<b>NANTUCKET TOWER ★</b> <b>118.3 (CTAF) 0</b>	GND CON <b>132.5</b>	UNICOM <b>122.95</b>
----------------------	--------------------------------------	---	-------------------------	-------------------------



ELEV 47	<b>D</b>	TDZE 45
---------	----------	---------



GP 3.00° TCH 45				
CATEGORY	A	B	C	D
LPV DA	295-1		250 (300-1)	
LNAV/VNAV DA	480-1½		435 (500-1½)	
LNAV MDA	440-1 395 (400-1)		440-1⅛ 395 (400-1⅛)	

TDZL/RCLS Rwy 24  
REIL Rws 15 and 33  
MIRL Rwy 15-33  
HIRL Rwy 6-24

NE-1, 19 MAR 2026 to 16 APR 2026

NE-1, 19 MAR 2026 to 16 APR 2026