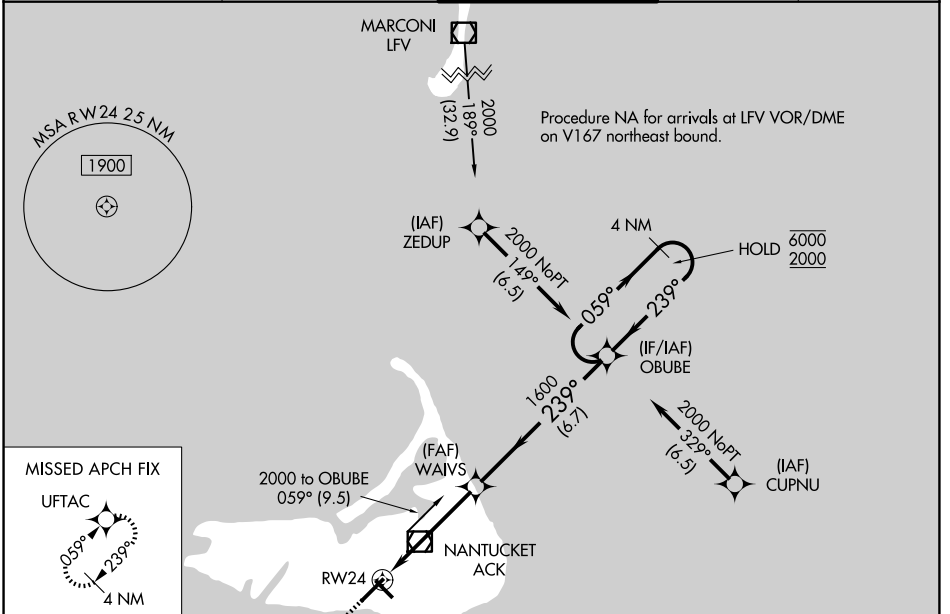


WAAS CH 93612 W24A	APP CRS 239°	Rwy Ldg TDZE Apt Elev	6303 47 47
--	------------------------	-----------------------------	---------------------------------------

RNAV (GPS) RWY 24

NANTUCKET MEML (ACK)

RNP APCH - GPS.		SSALR	
<p>▼ For uncompensated Baro-VNAV systems, LNAV/VNAV NA below -12°C or above 54°C. ▲ For inop ALS increase LNAV/VNAV all Cats visibility to RVR 4000 and LNAV Cats C/D visibility to 1½ SM.</p>		<p>MISSED APPROACH: Climb to 2300 direct UFTAC and hold.</p>	
ATIS 127.5	BOSTON APP CON 126.1 318.1	NANTUCKET TOWER * 118.3 (CTAF) 0	GND CON 132.5
		UNICOM 122.95	



ELEV 47 **D** TDZE 47

TWR * 118.3
45800/100
6303 x 150
0.2% UP

TDZL/RCLS Rwy 24
REIL Rwys 15 and 33
MIRL Rwy 15-33
HIRL Rwy 6-24

2300 UFTAC	4 NM Holding Pattern
OBUBE	059° → 6000 ← 239° 2000
WAIVS	GP 3.00° TCH 47
RW24	1.3 NM to RW24
	1.3 NM 3.4 NM 6.7 NM
CATEGORY	A B C D
LPV DA	247/18 200 (200-½)
LNAV/VNAV DA	300/24 253 (300-½)
LNAV MDA	520/24 473 (500-½) 520/50 473 (500-1)
CIRCLING	520-1 473 (500-1) 720-2 673 (700-2) 720-2¼ 673 (700-2¼)

NE-1, 19 MAR 2026 to 16 APR 2026

NE-1, 19 MAR 2026 to 16 APR 2026