

WAAS CH <b>81912</b> <b>W06A</b>	APP CRS <b>059°</b>	Rwy Ldg TDZE Apt Elev	<b>5765</b> <b>38</b> <b>47</b>
--	------------------------	-----------------------------	---------------------------------------

# RNAV (GPS) RWY 6

NANTUCKET MEML (ACK)

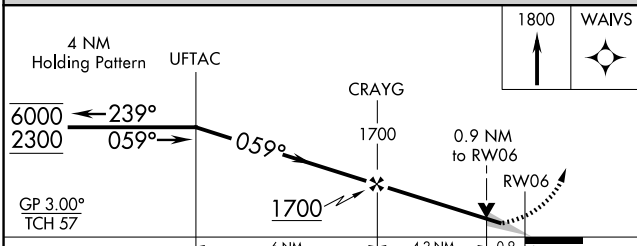
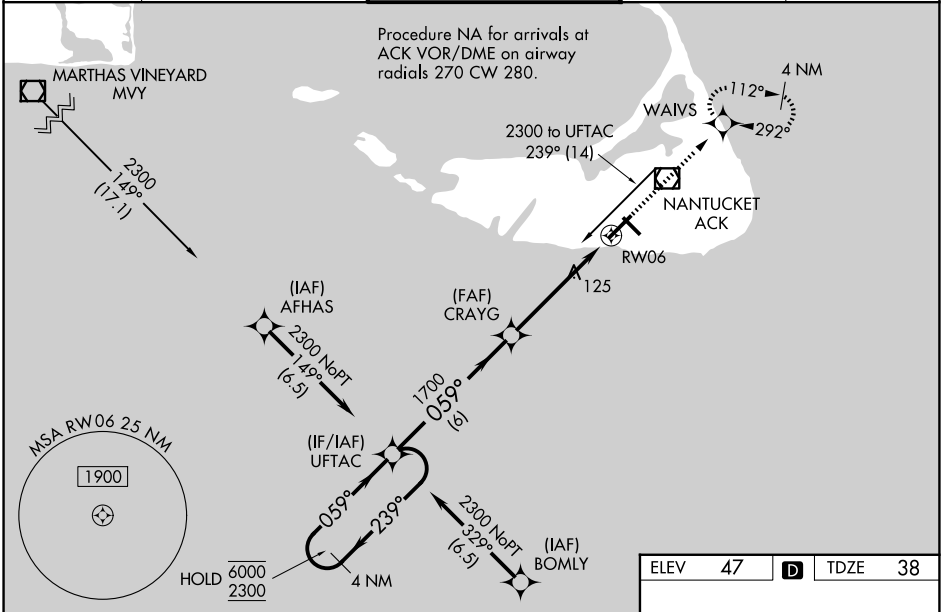
RNP APCH - GPS.

**⚠** For uncompensated Baro-VNAV systems, LNAV/VNAV NA below -12°C or above 54°C. For inop ALS increase LNAV/VNAV visibility all Cats to RVR 4500, and LNAV visibility all Cats to RVR 5500. Inop table does not apply to LPV.

**MALSF**

**MISSED APPROACH:** Climb to 1800 direct WAIVS and hold, continue climb in hold to 1800.

ATIS <b>127.5</b>	BOSTON APP CON <b>126.1 318.1</b>	NANTUCKET TOWER ★ <b>118.3 (CTAF) 0</b>	GND CON <b>132.5</b>	UNICOM <b>122.95</b>
----------------------	--------------------------------------	--	-------------------------	-------------------------



ELEV 47	<b>D</b>	TDZE 38
---------	----------	---------

TDZL/RCLS Rwy 24  
REIL Rwys 15 and 33  
MIRL Rwy 15-33 0  
HIRL Rwy 6-24 0

CATEGORY	A	B	C	D
LPV DA		238/40	200 (200-¾)	
LNAV/VNAV DA		300/40	262 (300-¾)	
LNAV MDA		380/40	342 (400-¾)	
CIRCLING	480-1 433 (500-1)	500-1 453 (500-1)	720-2 673 (700-2)	720-2¼ 673 (700-2¼)

NE-1, 19 MAR 2026 to 16 APR 2026

NE-1, 19 MAR 2026 to 16 APR 2026