


ACK VOR/DME 116.2 Chan 109	APP CRS 240°	Rwy Ldg 6303 TDZE 48 Apt Elev 48
--	------------------------	---

VOR RWY 24

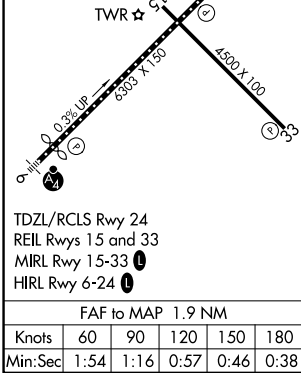
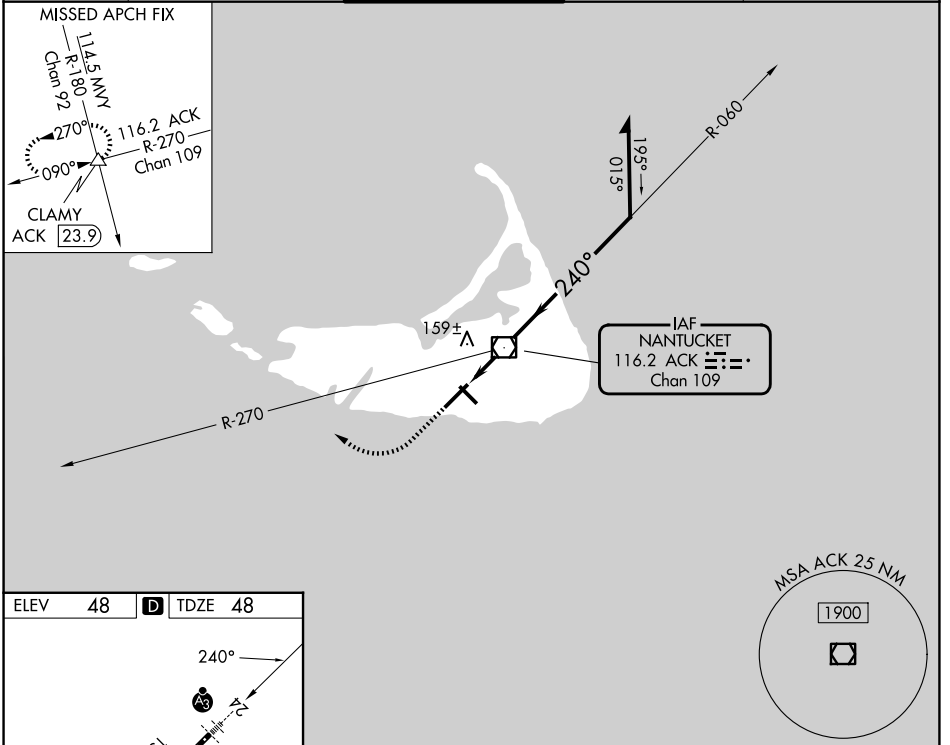
NANTUCKET MEML (ACK)

▼ When local altimeter setting not received, use HYA altimeter setting and increase all MDAs 80 feet and S-24 visibility Cat C and D to RVR 5000 and increase Circling visibility Cats C and D ¼ SM. For inoperative SSALR: for inop ALS, increase S-24 Cats C and D visibility to RVR 6000. For inop ALS when using HYA altimeter setting, increase S-24 Cats C and D visibility to 1¾.

SSALR


MISSED APPROACH: Climb to 700 then climbing right turn to 2500 via heading 310° and ACK VOR/DME R-270 to CLAMY INT/ACK 23.9 DME and hold.

ATIS 127.5	BOSTON APP CON 126.1 318.1	NANTUCKET TOWER ★ 118.3 (CTAF) 0	GND CON 132.5	UNICOM 122.95
----------------------	--------------------------------------	--	-------------------------	-------------------------



700	2500	CLAMY	ACK VOR/DME	Remain within 10 NM
		ACK R-270	6000	
			060°	1800
			240°	800
			3.47° TCH 48	VGSI and descent angles not coincident (VGSI Angle 3.00/TCH 48).
			1 NM	0.9 NM
CATEGORY	A	B	C	D
S-24	440/24	393 (400-½)	440/40	393 (400-¾)
CIRCLING	480-1 433 (500-1)	500-1 453 (500-1)	720-2 673 (700-2)	720-2¼ 673 (700-2¼)

NE-1, 19 MAR 2026 to 16 APR 2026

NE-1, 19 MAR 2026 to 16 APR 2026