

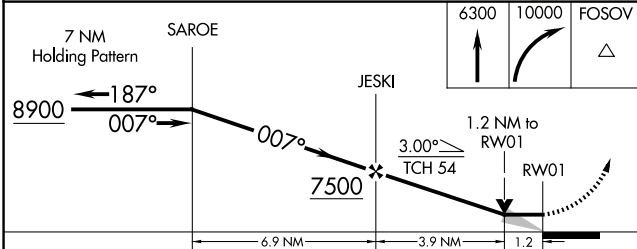
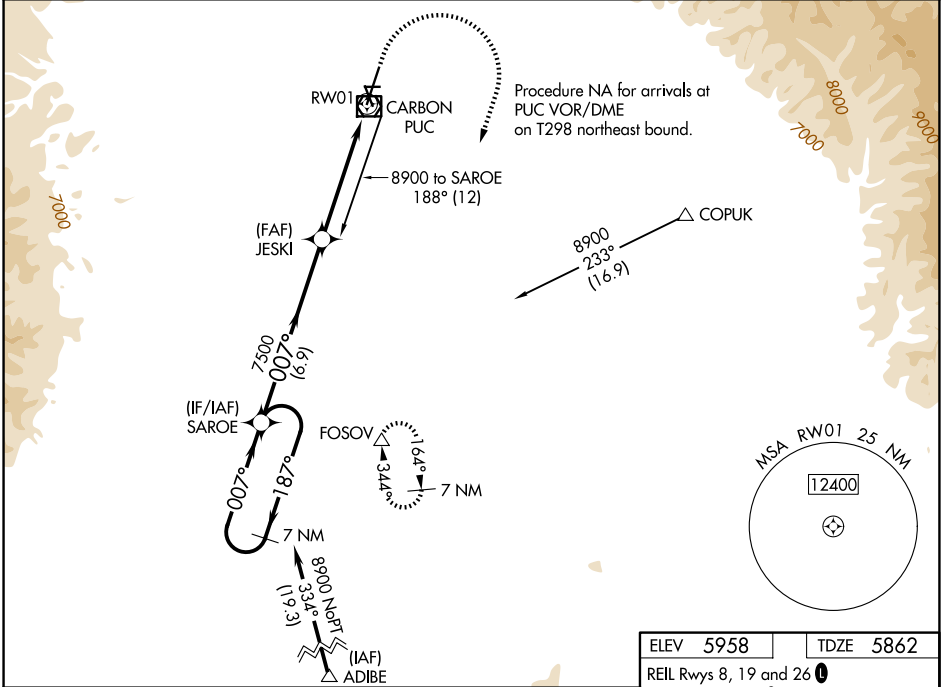
| | | |
|--|------------------------|---|
| WAAS CH 78037 W01A | APP CRS 007° | Rwy Ldg 8316 TDZE 5862 Apt Elev 5958 |
|--|------------------------|---|

RNAV (GPS) RWY 1

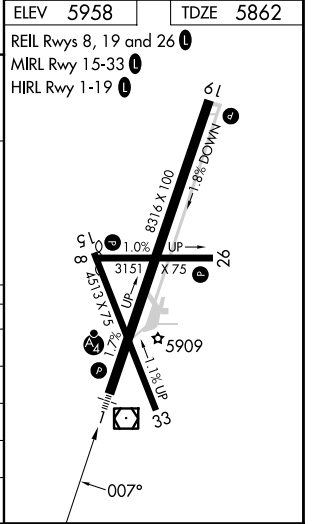
CARBON COUNTY RGNL/BUCK DAVIS FLD (PUC)

| | | |
|---|-------|--|
| RNP APCH. | MALSF | MISSED APPROACH: Climb to 6300 then climbing right turn to 10000 direct FOSOV and hold, continue climb-in-hold to 10000. #Missed approach requires minimum climb of 296 feet per NM to 7500. |
| <p>▼ Circling NA at night. For inoperative</p> <p>▲ ALS increase LP Cat C/D visibility to 1 3/8 SM.</p> | | |

| | | |
|------------------------|---|---------------------------------|
| ASOS 135.425 | SALT LAKE CENTER 133.9 370.85 | UNICOM 122.8 (CTAF) 0 |
|------------------------|---|---------------------------------|



| CATEGORY | A | B | C | D |
|------------|-----------------------|--------------------------------|-------------------------|-----------------|
| LP MDA # | 6240-3/4 | | 378 (300-3/4) | |
| LNAV MDA # | 6260-3/4 | 398 (400-3/4) | 6260-7/8 | 398 (400-7/8) |
| LP MDA | 6320-3/4 | 458 (400-3/4) | 6320-1 | 458 (400-1) |
| LNAV MDA | 6500-3/4 | 638 (600-3/4) | 6500-1 1/2 | 638 (600-1 1/2) |
| CIRCLING | 6660-1 702 (800-1) | 6860-1 1/4 902 (1000-1 1/4) | 7120-3 1162 (1200-3) | NA |



SW-4, 19 MAR 2026 to 16 APR 2026

SW-4, 19 MAR 2026 to 16 APR 2026

RNAV (GPS) RWY 1