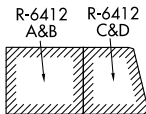


SALT LAKE CITY APP CON
118.85 233.7
ATIS
135.175

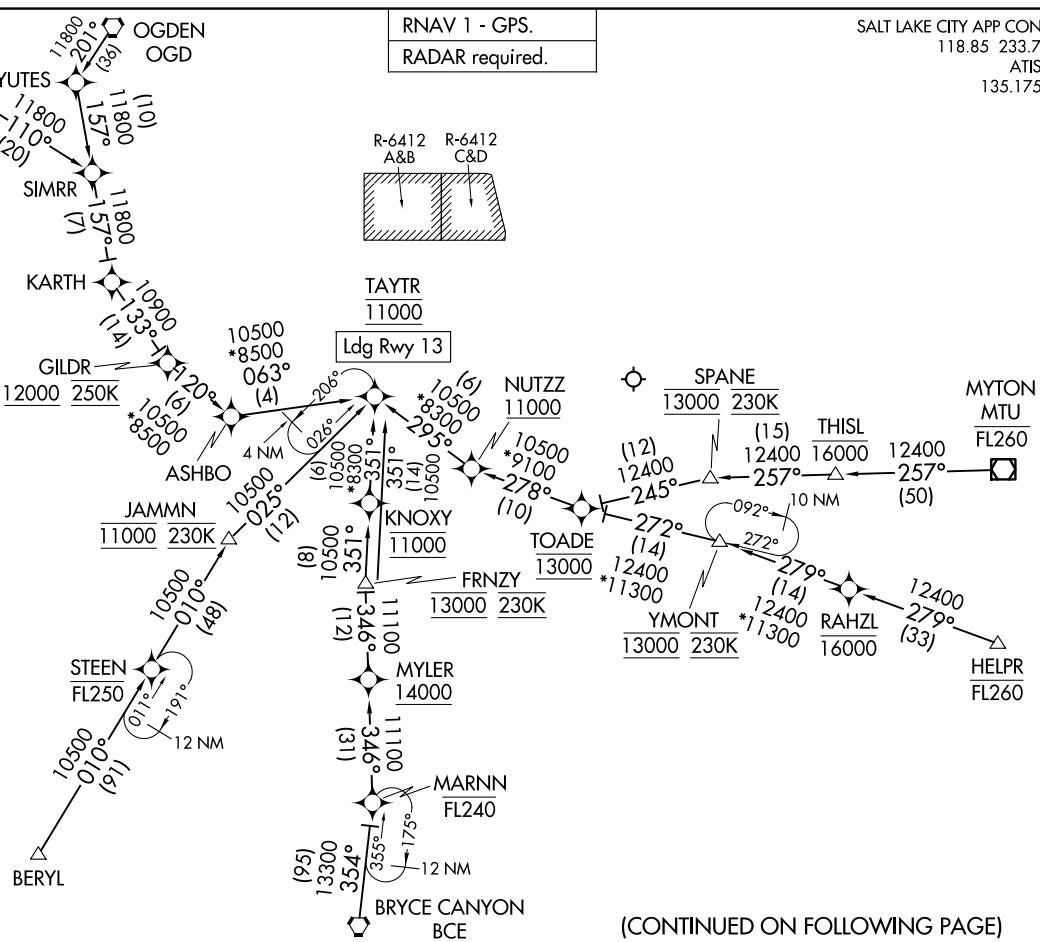
RNAV 1 - GPS.

RADAR required.



TAYTR
11000

Ldg Rwy 13



TAYTR THREE ARRIVAL (RNAV)
(TAYTR, TAYTR3) 19 MAR 26

(TAYTR, TAYTR3) 26078
TAYTR THREE ARRIVAL (RNAV)

AL-683 (FAA)

PROVO MUNI (PVTU)
PROVO, UTAH

NOTE: GPS required.
NOTE: Chart not to scale.

(CONTINUED ON FOLLOWING PAGE)

ARRIVAL ROUTE DESCRIPTION

BERYL TRANSITION (BERYL.TAYTR3)

BONNEVILLE TRANSITION (BVL.TAYTR3)

BRYCE CANYON TRANSITION (BCE.TAYTR3)

FRNZY TRANSITION (FRNZY.TAYTR3)

HELPR TRANSITION (HELPR.TAYTR3)

JAMMN TRANSITION (JAMMN.TAYTR3)

KNOLE TRANSITION (KNOLE.TAYTR3)

MARNN TRANSITION (MARNN.TAYTR3)

MYTON TRANSITION (MTU.TAYTR3)

OGDEN TRANSITION (OGD.TAYTR3)

RAHZL TRANSITION (RAHZL.TAYTR3)

SPANE TRANSITION (SPANE.TAYTR3)

STEEN TRANSITION (STEEN.TAYTR3)

THISL TRANSITION (THISL.TAYTR3)

YMONT TRANSITION (YMONT.TAYTR3)

From TAYTR, expect ILS or RNAV RWY 13 approach.

LOST COMMUNICATIONS

Proceed on assigned instrument approach.

SW-4, 19 MAR 2026 to 16 APR 2026

SW-4, 19 MAR 2026 to 16 APR 2026