

LOC/DME I-GLD 108.9 Chan 26	APP CRS 305°	Rwy Ldg 5499 TDZE 3653 Apt Elev 3658
--	------------------------	---

ILS or LOC RWY 30
RENNER FLD/GOODLAND MUNI (GLD)

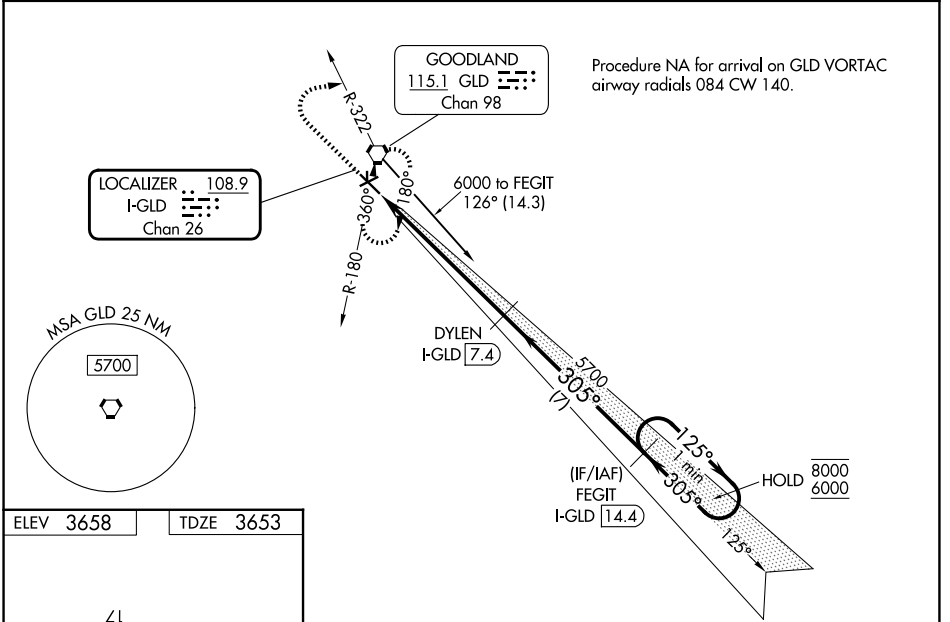
DME required.

⚠ VDP NA when using ITR altimeter setting. Circling Rwy 5 NA at night. Circling NA south of Rwy 5 and 30. Circling NA to Rwy 17 and 35. Rwy 30 helicopter visibility reduction below 3/4 SM NA. When local altimeter setting not received, use ITR altimeter setting: increase S-ILS 30 to DA 4043 feet; increase all MDAs 140 feet and S-LOC 30 Cat C and D visibility 3/8 SM, and Circling Cat C and D visibility 1/4 SM. For inop ALS, increase S-LOC 30 Cat C and D visibility to 1/2 SM. For inop ALS when using ITR altimeter setting, increase S-ILS 30 all Cats visibility to 1/2 SM, and S-LOC 30 Cat C and D visibility to 1/2 SM. Inop table does not apply to S-ILS 30 all Cats and S-LOC 30 Cats A and B.

MALS

MISSED APPROACH: Climb to 6000 then right turn on heading 070° and GLD VORTAC R-322 to GLD VORTAC and hold.

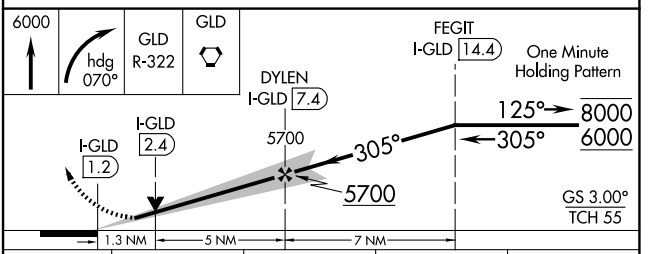
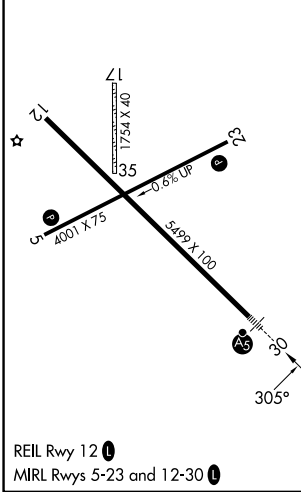
ASOS 121.025	DENVER CENTER 132.7 226.675	UNICOM 122.8 (CTAF) 1
------------------------	---------------------------------------	---------------------------------



NC-2, 19 MAR 2026 to 16 APR 2026

NC-2, 19 MAR 2026 to 16 APR 2026

ELEV 3658	TDZE 3653
-----------	-----------



CATEGORY	A	B	C	D
S-ILS 30	3903-1 250 (300-1)			
S-LOC 30	4120-1 467 (500-1)			
CIRCLING	4120-1	462 (500-1)	4120-1 1/2 462 (500-1 1/2)	4240-2 582 (600-2)