

WAAS CH <b>65838</b> <b>W12A</b>	APP CRS <b>125°</b>	Rwy Ldg TDZE Apt Elev	<b>5499</b> <b>3647</b> <b>3657</b>
--	------------------------	-----------------------------	---

# RNAV (GPS) RWY 12

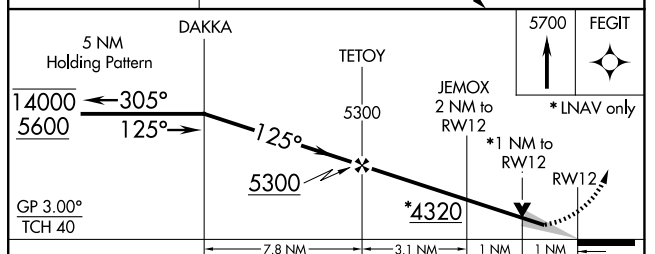
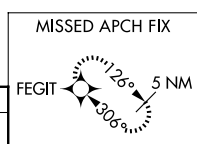
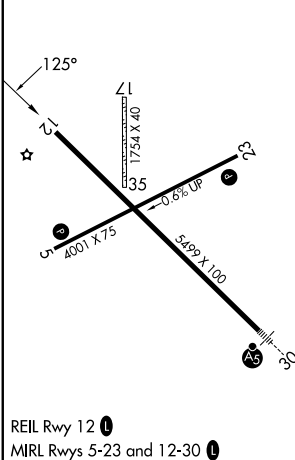
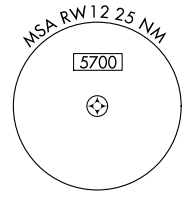
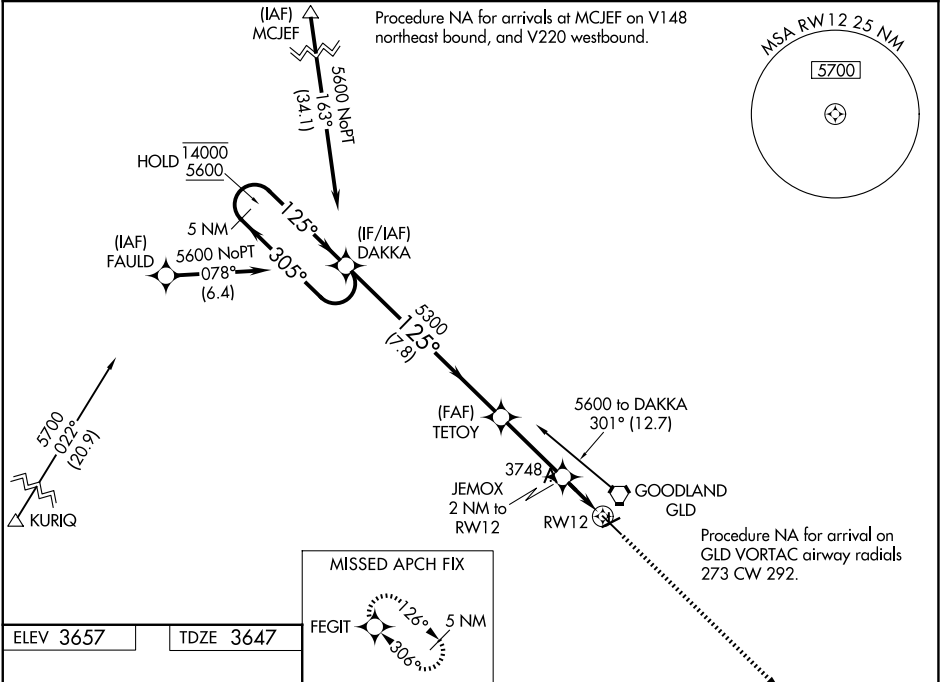
RENNER FLD/GOODLAND MUNI (GLD)

RNP APCH.

**▽** Circling NA to Rwy 17 and 35. Circling NA south of Rwy 5-30.  
**▲** For uncompensated Baro-VNAV systems, procedure NA below -23°C or above 54°C.

MISSED APPROACH: Climb to 5700 direct FEGIT and hold.

ASOS <b>121.025</b>	DENVER CENTER <b>132.7 226.675</b>	UNICOM <b>122.8 (CTAF) 0</b>
------------------------	---------------------------------------	---------------------------------



CATEGORY	A	B	C	D
LPV DA		3897-1	250 (300-1)	
LNAV/VNAV DA		4021-1	374 (400-1)	
LNAV MDA		4000-1	353 (400-1)	
CIRCLING	4060-1 403 (500-1)	4120-1 463 (500-1)	4120-1½ 463 (500-1½)	4240-2 583 (600-2)

NC-2, 19 MAR 2026 to 16 APR 2026

NC-2, 19 MAR 2026 to 16 APR 2026