

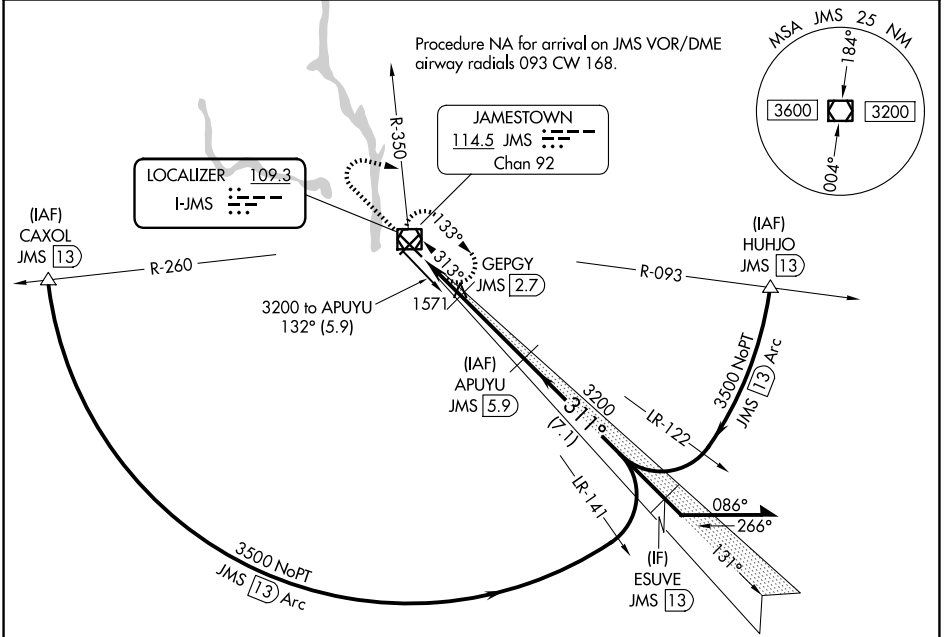
LOC I-JMS <b>109.3</b>	APP CRS <b>311°</b>	Rwy Ldg <b>6502</b> TDZE <b>1498</b> Apt Elev <b>1500</b>
---------------------------	------------------------	---

# ILS or LOC RWY 31

JAMESTOWN RGNL (JMS)

<p><b>▼</b> Autopilot coupled approach NA below 1900. DME required.</p> <p><b>▲ NA</b> DME from JMS VOR/DME. Simultaneous reception of I-JMS and JMS VOR/DME required.</p>	<p><b>MALSR</b></p>	<p><b>MISSED APPROACH:</b> Climb to 3200 then right turn heading 100° and on JMS VOR/DME R-350 to JMS VOR/DME and hold.</p>
--	---------------------	---

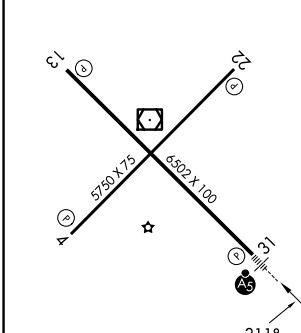
<p><b>ASOS</b> <b>118.425</b></p>	<p><b>MINNEAPOLIS CENTER</b> <b>124.2 270.3</b></p>	<p><b>UNICOM</b> <b>123.0 (CTAF) 0</b></p>
---------------------------------------	---	--



NC-1, 19 MAR 2026 to 16 APR 2026

NC-1, 19 MAR 2026 to 16 APR 2026

ELEV 1500	<b>D</b>	TDZE 1498
-----------	----------	-----------



MIRL Rwy 4-22 0

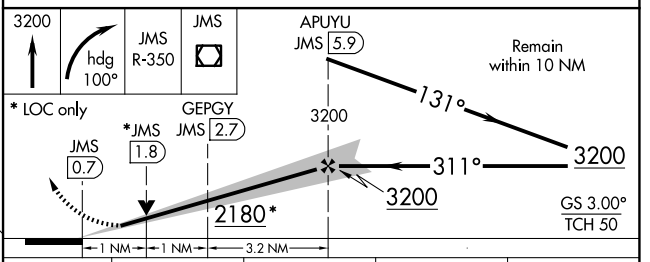
HIRL Rwy 13-31 0

REIL Rwys 4, 13, and 22 0

FAF to MAP 5.2 NM

Knots	60	90	120	150	180
Min:Sec	5:12	3:28	2:36	2:05	1:44

## DME REQUIRED



CATEGORY	A	B	C	D
S-ILS 31	1698-½ 200 (200-½)			
S-LOC 31	1880-½	382 (400-½)	1880-⅝	382 (400-⅝)
CIRCLING	1960-1	460 (500-1)	2000-1½ 500 (500-1½)	2300-2½ 800 (800-2½)