

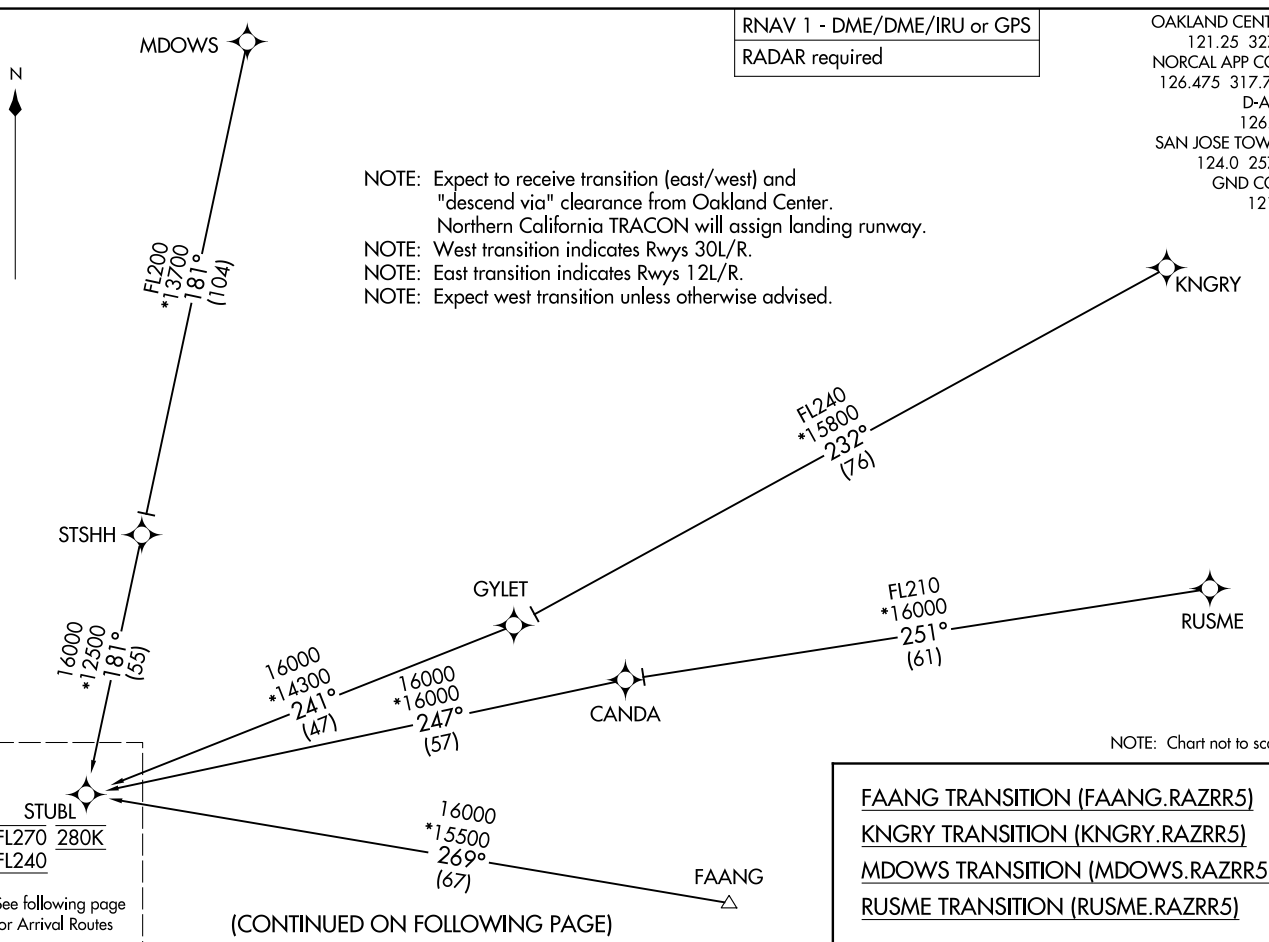
RNAV 1 - DME/DME/IRU or GPS
RADAR required

OAKLAND CENTER
121.25 327.0
NORCAL APP CON
126.475 317.775
D-ATIS
126.95
SAN JOSE TOWER*
124.0 257.6
GND CON
121.7

(STUBL.RAZRR5) 22195
RAZRR FIVE ARRIVAL (RNAV) Transition Routes

AL-693 (FAA) NORMAN Y MINETA SAN JOSE INTL (SJC)
SAN JOSE, CALIFORNIA

NOTE: Expect to receive transition (east/west) and "descend via" clearance from Oakland Center. Northern California TRACON will assign landing runway.
NOTE: West transition indicates Rwys 30L/R.
NOTE: East transition indicates Rwys 12L/R.
NOTE: Expect west transition unless otherwise advised.



STUBL
FL270 280K
FL240
See following page for Arrival Routes

(CONTINUED ON FOLLOWING PAGE)

FAANG TRANSITION (FAANG.RAZRR5)
KNGRY TRANSITION (KNGRY.RAZRR5)
MDOWS TRANSITION (MDOWS.RAZRR5)
RUSME TRANSITION (RUSME.RAZRR5)

NOTE: Chart not to scale.

RAZRR FIVE ARRIVAL (RNAV) (STUBL.RAZRR5) 140U122

Transition Routes

SAN JOSE, CALIFORNIA
NORMAN Y MINETA SAN JOSE INTL (SJC)

RAZRR FIVE ARRIVAL (RNAV) (STUBL, RAZRR5) 140U22
 ARRIVAL ROUTES
 NORMAN Y MINETA SAN JOSE INTL (SJC)
 SAN JOSE, CALIFORNIA

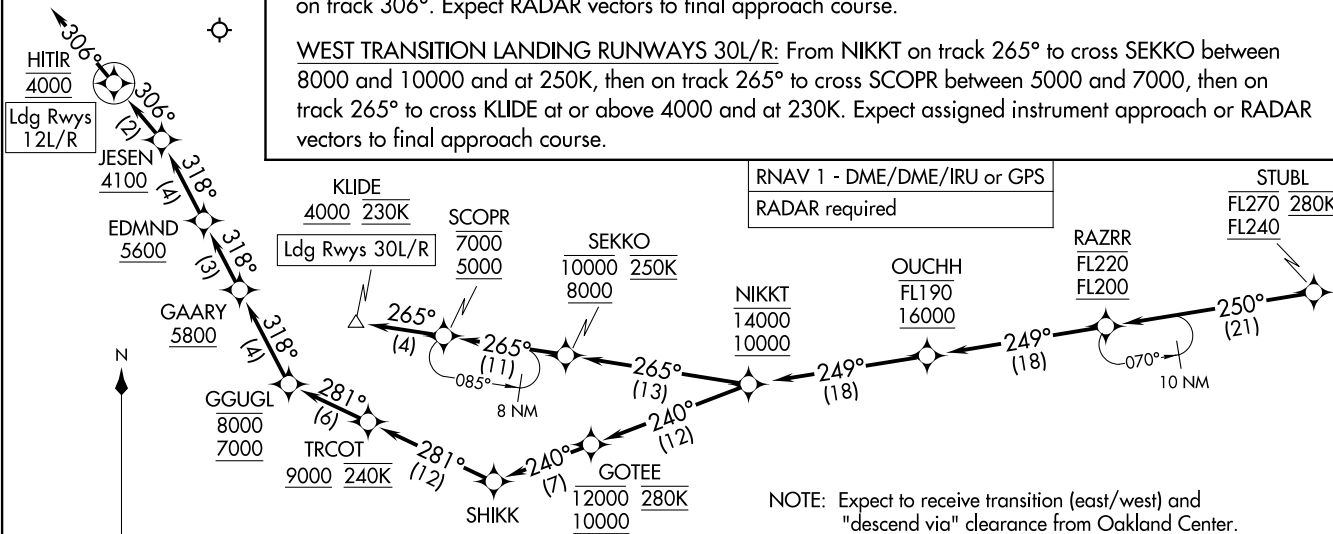
OAKLAND CENTER
 121.25 327.0
 NORCAL APP CON
 126.475 317.775
 D-ATIS
 126.95
 SAN JOSE TOWER*
 124.0 257.6
 GND CON
 121.7

ARRIVAL ROUTE DESCRIPTION

From STUBL on track 250° to cross RAZRR between FL200 and FL220, then on track 249° to cross OUCHH between 16000 and FL190, then on track 249° to cross NIKKT between 10000 and 14000.

EAST TRANSITION LANDING RUNWAYS 12L/R: From NIKKT on track 240° to cross GOTEE between 10000 and 12000 and at 280K, then on track 240° to SHIKK, then on track 281° to cross TRCOT at or above 9000 and at 240K, then on track 281° to cross GGUGL between 7000 and 8000, then on track 318° to cross GAARY at or above 5800, then on track 318° to cross EDMND at or above 5600, then on track 318° to cross JESEN at or above 4100, then on track 306° to cross HITIR at 4000. Expect RADAR vectors to final approach course.

WEST TRANSITION LANDING RUNWAYS 30L/R: From NIKKT on track 265° to cross SEKKO between 8000 and 10000 and at 250K, then on track 265° to cross SCOPR between 5000 and 7000, then on track 265° to cross KLIDE at or above 4000 and at 230K. Expect assigned instrument approach or RADAR vectors to final approach course.



RNAV 1 - DME/DME/IRU or GPS
 RADAR required

- NOTE: Expect to receive transition (east/west) and "descend via" clearance from Oakland Center. Northern California TRACON will assign landing runway.
- NOTE: West transition indicates Rwy 30L/R.
- NOTE: East transition indicates Rwy 12L/R.
- NOTE: Expect west transition unless otherwise advised.

(STUBL, RAZRR5) 22195
 RAZRR FIVE ARRIVAL (RNAV) Arrival Routes
 AL-693 (FAA)
 NORMAN Y MINETA SAN JOSE INTL (SJC)
 SAN JOSE, CALIFORNIA