

(DEZZ6.DEEZZ) 26078

AL-704 (FAA)

REPUBLIC (FRG)

DEZZ SIX DEPARTURE (RNAV)

FARMINGDALE, NEW YORK

NEW YORK DEP CON
 125.7 353.75
 ATIS
 126.65
 CLNC DEL
 128.25
 GND CON
 121.6 269.6
 REPUBLIC TOWER *
 118.8 279.65

RNAV-1 DME/DME/IRU or GPS required.
 RADAR required.

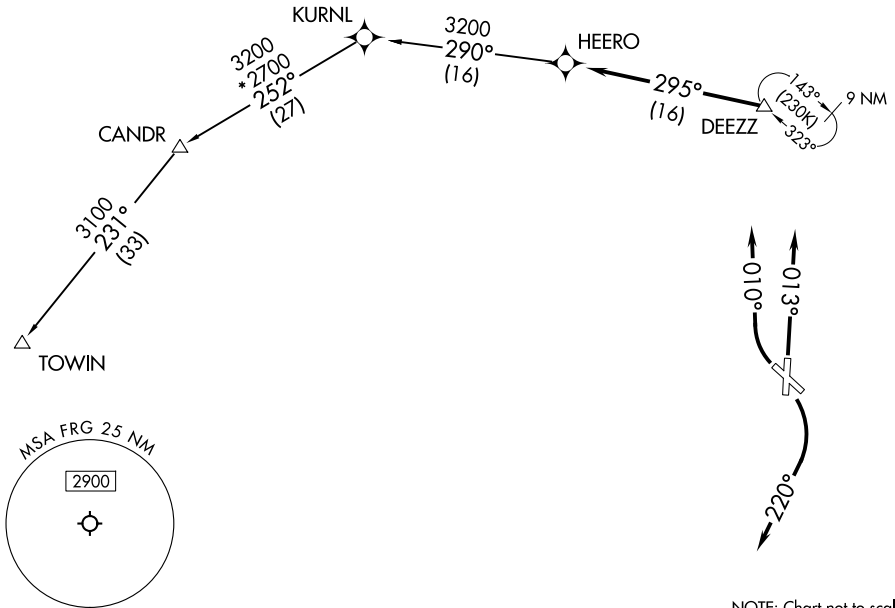
**TOP ALTITUDE:
 3000**

TAKEOFF MINIMUMS

Rwys 14,19: Standard.

Rwys 1,32: Standard with minimum climb of 245' per NM to 800.

NOTE: Do not file TOWIN Transition - to be assigned by ATC.



NE-2, 19 MAR 2026 to 16 APR 2026

NE-2, 19 MAR 2026 to 16 APR 2026

NOTE: Chart not to scale.



DEPARTURE ROUTE DESCRIPTION

TAKEOFF RUNWAY 1: Climb on heading 013°, thence....

TAKEOFF RUNWAYS 14, 19: Climbing right turn heading 220°, thence....

TAKEOFF RUNWAY 32: Climbing right turn to heading 010°, thence....

....for vectors to DEZZ, then on track 295° to HEERO, then on assigned transition, maintain 3000. Expect filed altitude 10 minutes after departure.

CANDR TRANSITION (DEZZ6.CANDR)

TOWIN TRANSITION (DEZZ6.TOWIN)

DEZZ SIX DEPARTURE (RNAV)

(DEZZ6.DEEZZ) 19MAR26

FARMINGDALE, NEW YORK

REPUBLIC (FRG)