

WAAS CH 69612 W14A	APP CRS 146°	Rwy Ldg TDZE Apt Elev	6157 77 80
--	------------------------	-----------------------------	---------------------------------------

RNAV (GPS) Y RWY 14

REPUBLIC (F'RG)

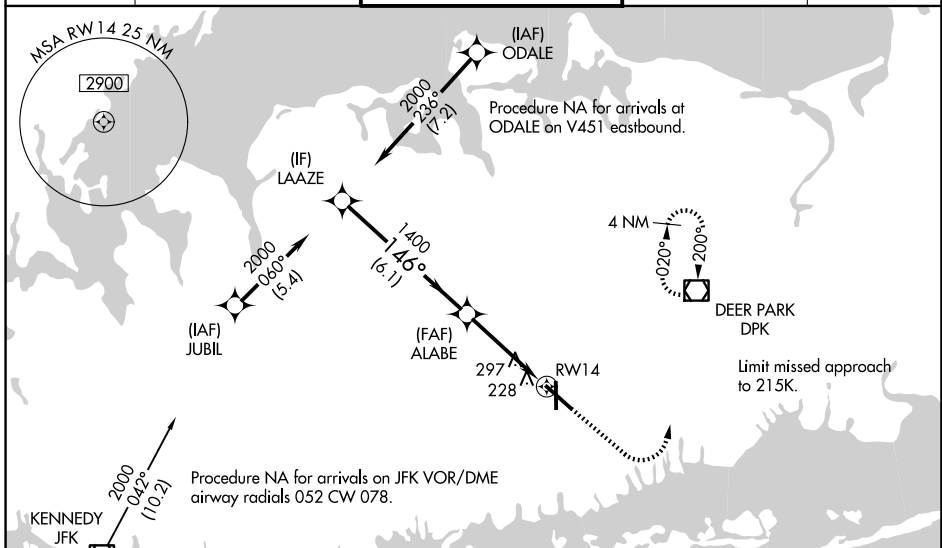
RNP APCH - GPS.

⚠ For uncompensated Baro-VNAV systems, LNAV/VNAV NA below -15°C or above 54°C.
 ⚠ Baro-VNAV and VDP NA when using ISP altimeter setting. When local altimeter setting not received, use ISP altimeter setting and increase LPV DA to 374 feet and all visibilities ½ SM. Increase LNAV/VNAV DA to 442 feet; increase all MDAs 40 feet and LNAV visibility Cat C/D ½ SM, and Circling visibility Cat C ¼ SM.

MALSF

MISSED APPROACH: Climb to 1800 then climbing left turn to 3000 direct DPK VOR/DME and hold, continue climb-in-hold to 3000.

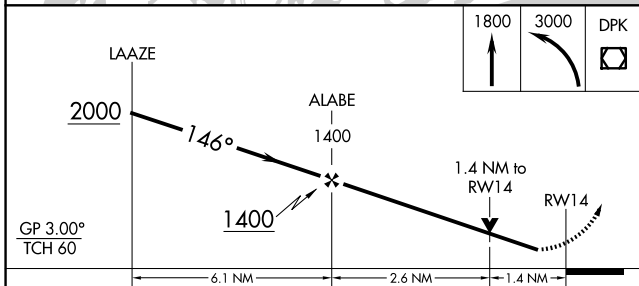
ATIS 126.65	NEW YORK APP CON 128.125 269.0	REPUBLIC TOWER ★ 118.8 (CTAF) 279.65	GND CON 121.6 269.6	UNICOM 122.95
-----------------------	--	--	-------------------------------	-------------------------



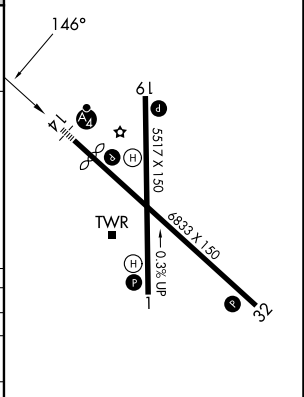
NE-2, 19 MAR 2026 to 16 APR 2026

NE-2, 19 MAR 2026 to 16 APR 2026

ELEV 80	TDZE 77
---------	---------



CATEGORY	A	B	C	D
LPV DA		337-3/4	260 (300-3/4)	
LNAV/VNAV DA		405-1	328 (400-1)	
LNAV MDA	560-3/4	483 (500-3/4)	560-1	483 (500-1)
CIRCLING	640-1 560 (600-1)	720-1 640 (700-1)	860-2 1/4 780 (800-2 1/4)	1000-3 920 (1000-3)



REIL Rwy 1, 19, and 32

MIRL Rwy 1-19

HIRL Rwy 14-32