

WAAS CH 97619 W22A	APP CRS 224°	Rwy Ldg TDZE Apt Elev	6502 750 755
--	------------------------	-----------------------------	---

RNAV (GPS) RWY 22

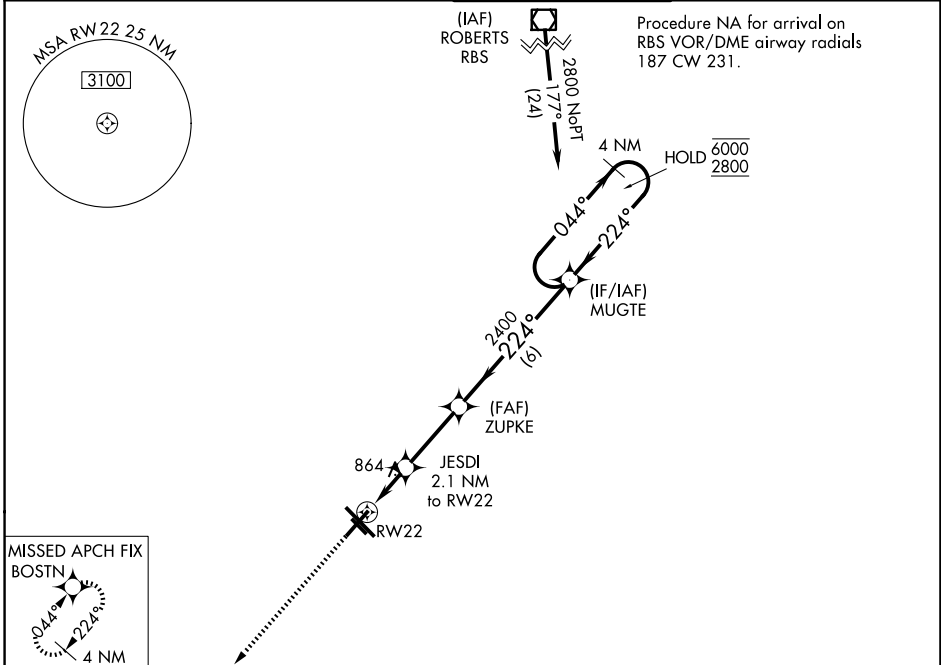
UNIVERSITY OF ILLINOIS/WILLARD (CMI)

RNP APCH - GPS.

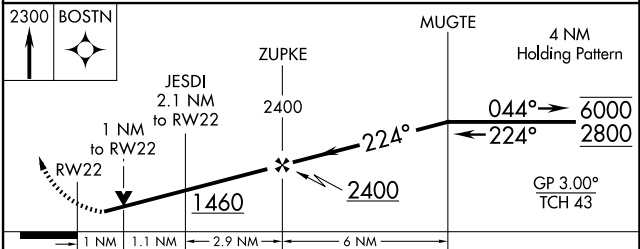
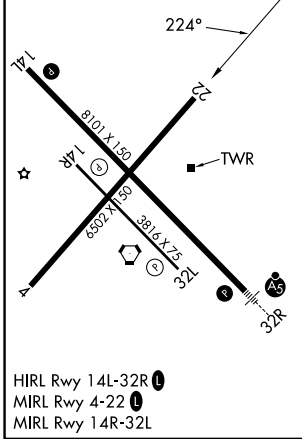
ASR Rwy 22 helicopter visibility reduction below 3/4 SM NA. For uncompensated Baro-VNAV systems, LNAV/VNAV NA below -21°C or above 54°C.

MISSED APPROACH:
Climb to 2300 direct BOSTN and hold.

ATIS 124.85	CHAMPAIGN APP CON ★ 121.35 285.65 (319°-138°) 132.85 290.225 (139°-318°)	CHAMPAIGN TOWER ★ 120.4 (CTAF) 0 229.4	GND CON 121.8	UNICOM 122.95
-----------------------	--	---	-------------------------	-------------------------



ELEV 755	D	TDZE 750
----------	----------	----------



CATEGORY	A	B	C	D
LPV DA		1000-3/4	250 (300-3/4)	
LNAV/VNAV DA		1219-1 3/8	469 (500-1 3/8)	
LNAV MDA		1120-1	370 (400-1)	
CIRCLING	1240-1	485 (500-1)	1500-2 1/4 745 (800-2 1/4)	1500-2 1/2 745 (800-2 1/2)

EC-3, 19 MAR 2026 to 16 APR 2026

EC-3, 19 MAR 2026 to 16 APR 2026