

VORTAC CMI 115.75 Chan 104 (Y)	APP CRS 207°	Rwy Ldg TDZE Apt Elev	6502 750 755
----------------------------------------------------	------------------------	-----------------------------	-----------------------------------------

VOR RWY 22

UNIVERSITY OF ILLINOIS/WILLARD (CMI)

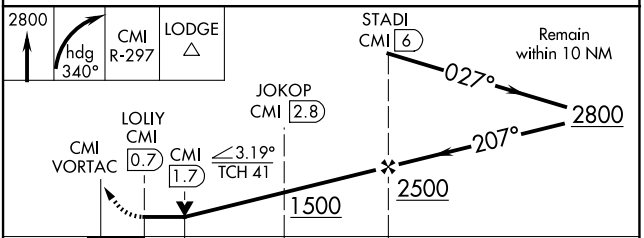
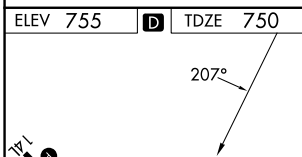
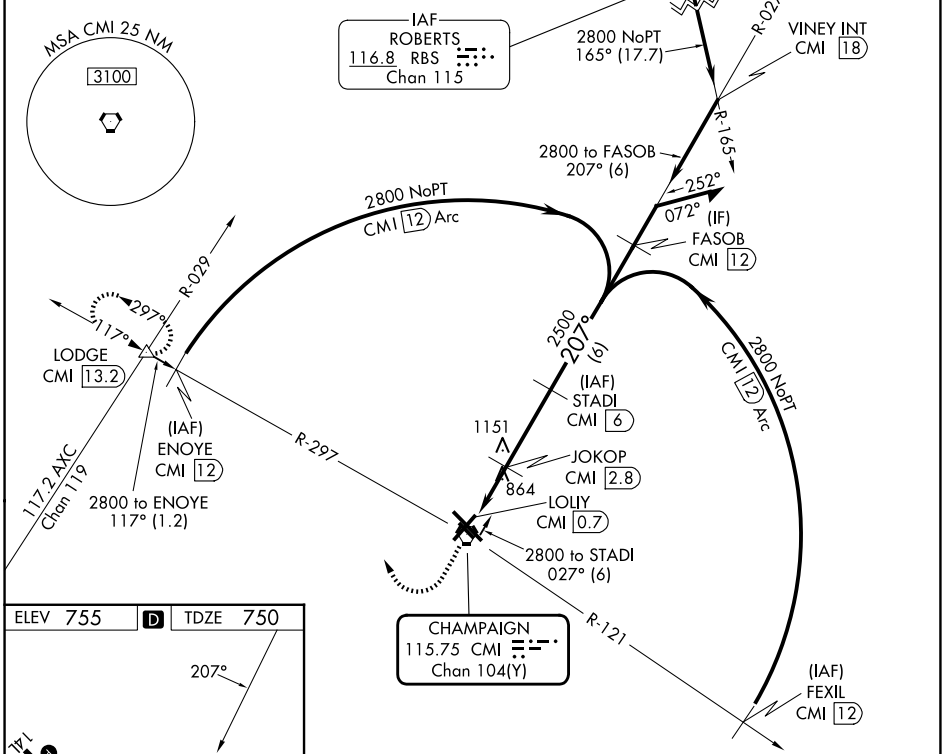
DME required.

ASR Rwy 22 helicopter visibility reduction below 3/4 SM NA.

MISSED APPROACH: Climb to 2800 then right turn on heading 340° and on CMI VORTAC R-297 to LODGE INT/CMI 13.2 DME and hold.

ATIS 124.85	CHAMPAIGN APP CON * 121.35 285.65 (319°-138°) 132.85 290.225 (139°-318°)	CHAMPAIGN TOWER * 120.4 (CTAF) 0 229.4	GND CON 121.8	UNICOM 122.95
-----------------------	----------------------------------------------------------------------------------------------	--------------------------------------------------	-------------------------	-------------------------

Procedure NA for arrivals at RBS VOR/DME on V191 northeast bound.



CATEGORY	A	B	C	D
S-22		1120-1	370 (400-1)	
CIRCLING	1240-1	485 (500-1)	1500-2 1/4 745 (800-2 1/4)	1500-2 1/2 745 (800-2 1/2)

EC-3, 19 MAR 2026 to 16 APR 2026

EC-3, 19 MAR 2026 to 16 APR 2026