

LOC/DME I-DEC 110.9 Chan 46	APP CRS 060°	Rwy Idg TDZE Apt Elev	8496 677 682
---	------------------------	-----------------------------	---

ILS or LOC RWY 6

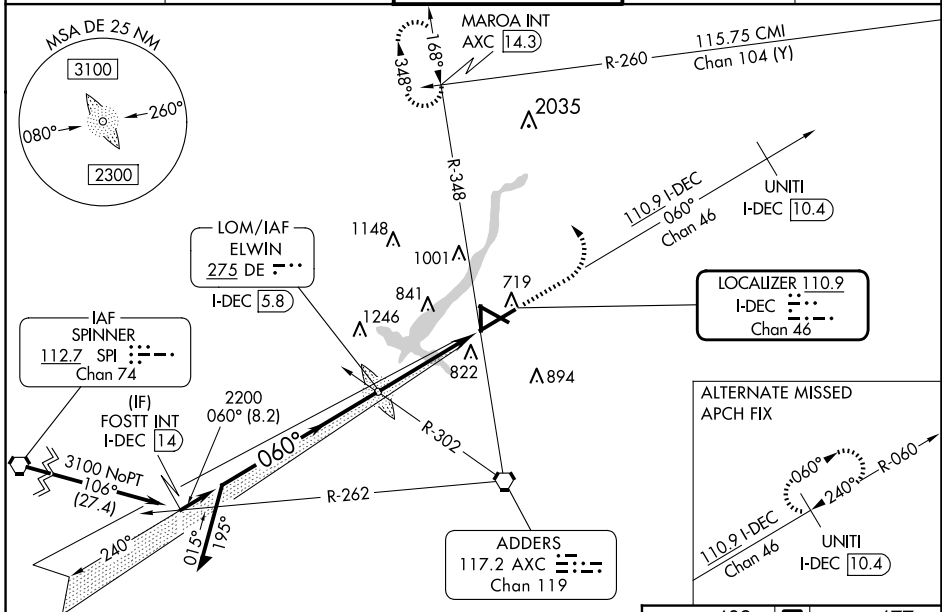
DECATUR (DEC)

⚠ When local altimeter setting not received, use Lincoln altimeter setting and increase S-ILS 6 DA to 957 feet; increase all MDAs 80 feet and S-LOC 6 visibility Cat C/D to RVR 4000 and Circling visibility Cat C/D ¼ SM. For inop ALS, increase S-LOC 6 Cat C/D visibility to 1 ¾ SM. For inop ALS when using Lincoln altimeter, increase S-ILS all Cats visibility to RVR 4500. VDP NA when using Lincoln altimeter setting. * RVR 1800 authorized with use of FD or AP or HUD to DA (NA when using Lincoln altimeter setting).



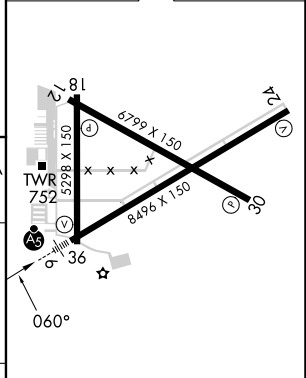
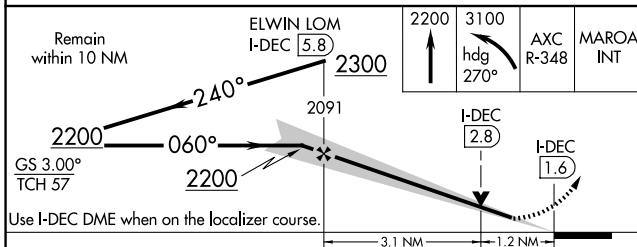
MISSED APPROACH: Climb to 2200 then climbing left turn to 3100 on heading 270° and AXC VORTAC R-348 to MAROA INT/ AXC 14.3 DME and hold.

ATIS 126.35	CHAMPAIGN APP CON* 132.85 290.225	DECATUR TOWER* 118.9(CTAF) 291.775	GND CON 121.75 291.775	UNICOM 122.95
-----------------------	---	--	----------------------------------	-------------------------



Procedure NA for arrival on SPI VORTAC airway radials 062 CW 153.

ELEV 682	TDZE 677
----------	----------



CATEGORY	A	B	C	D
S-ILS 6*	877/24 200 (200-½)			
S-LOC 6	1140/24	463 (500-½)	1140/50	463 (500-1)
CIRCLING	1140-1 458 (500-1)	1240-1 558 (600-1)	1360-2 678 (700-2)	1360-2¼ 678 (700-2¼)

HIRL Rwy 6-24
MIRL Rwy 12-30 and 18-36

FAF to MAP 4.3 NM

Knots	60	90	120	150	180
Min:Seq	4:18	2:52	2:09	1:43	1:26

EC-3, 19 MAR 2026 to 16 APR 2026

EC-3, 19 MAR 2026 to 16 APR 2026