

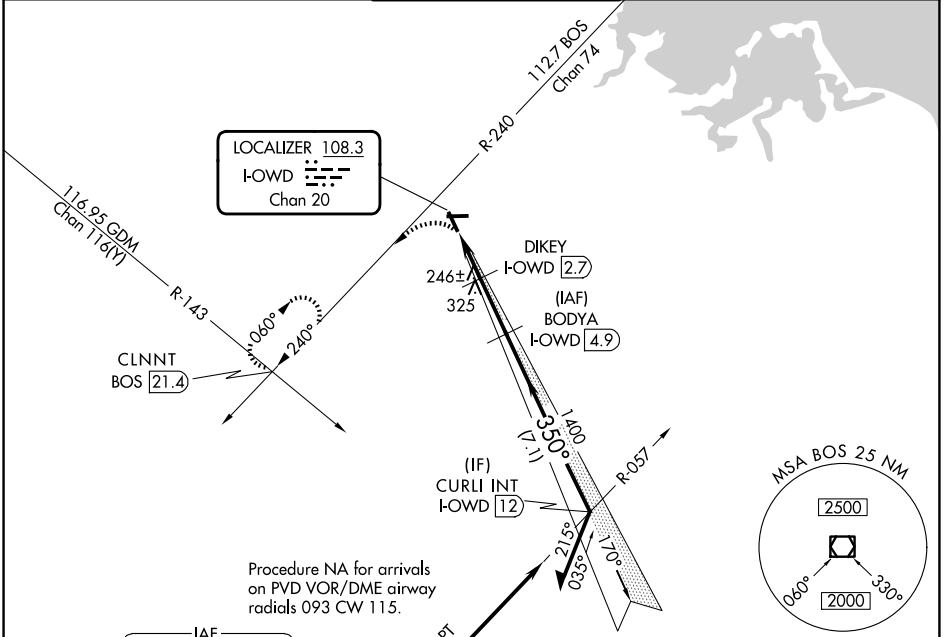
LOC/DME I-OWD 108.3 Chan 20	APP CRS 350°	Rwy Ldg 4007 TDZE 49 Apt Elev 49
--	------------------------	---

LOC RWY 35

NORWOOD MEML (OWD)

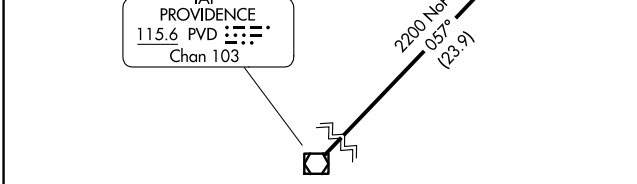
DME required.	MALSF	MISSED APPROACH: Climbing left turn to 2000 on heading 200 and on BOS VOR/DME R-240 to CLNNT INT/ BOS VOR/DME 21.4 DME and hold.
Helicopter visibility reduction below 3/4 SM NA. Circling NA at night. For inop ALS, increase S-35 Cat C/D visibility to 1 3/8 SM.		

ATIS 119.95	BOSTON APP CON 124.1 263.1	NORWOOD TOWER ★ 126.0 (CTAF) 0	GND CON 121.8	CLNC DEL 121.8
-----------------------	--------------------------------------	--	-------------------------	--------------------------

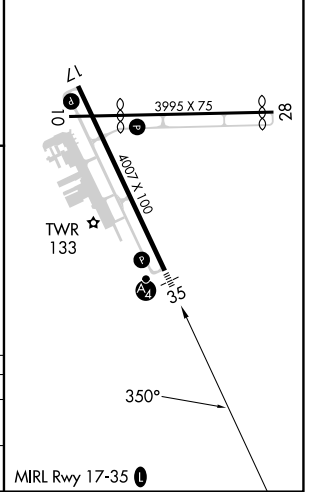


NE-1, 19 MAR 2026 to 16 APR 2026

NE-1, 19 MAR 2026 to 16 APR 2026



ELEV 49	D	TDZE 49
---------	---	---------



	2000	CLNNT	BODYA	Remain		
	hdg 200	BOS R-240	INT	I-OWD 4.9	within 10 NM	
			DIKEY	2100	170°	2100
			I-OWD 2.7			
			I-OWD 0.8			
			I-OWD 2.1			
			700	≤ 3.00°	1400	
				TCH 40		
				1.3 NM	0.6 NM	2.2 NM
CATEGORY	A	B	C	D		
S-LOC 35	500-3/4	451 (500-3/4)	500-1	451 (500-1)		
CIRCLING	600-1	700-1	1220-3	1171 (1200-3)		
	551 (600-1)	651 (700-1)				