

NORWOOD FIVE DEPARTURE
(OWD5.OWD) 21 MAR 24

NORWOOD FIVE DEPARTURE
24193
AL-725 (FAA)

**TOP ALTITUDE:
2000**

RADAR required.
DME required: BLZZR, BRUWN, HYLND, PATSS, REVSS DEPARTURES

KENNEBUNK
117.1 ENE
Chan 118

BOSTON DEP CON
124.1 343.6
ATIS 119.95
CLNC DEL
121.8
GND CON
121.8
NORWOOD TOWER*
126.0 (CTAF)

SYRACUSE
117.0 SYR
Chan 117

CAMBRIDGE
115.0 CAM
Chan 97

CHESTER
115.1 CTR
Chan 98

BARNES
113.0 BAF
Chan 77

PROVIDENCE
115.6 PVD
Chan 103

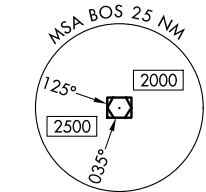
BOSTON
112.7 BOS
Chan 74

MARCONI
114.7 LFV
Chan 94

MARTHAS VINEYARD
114.5 MVY
Chan 92

SANDY POINT
117.8 SEY
Chan 125

NANTUCKET
116.2 ACK
Chan 109



TAKEOFF MINIMUMS:

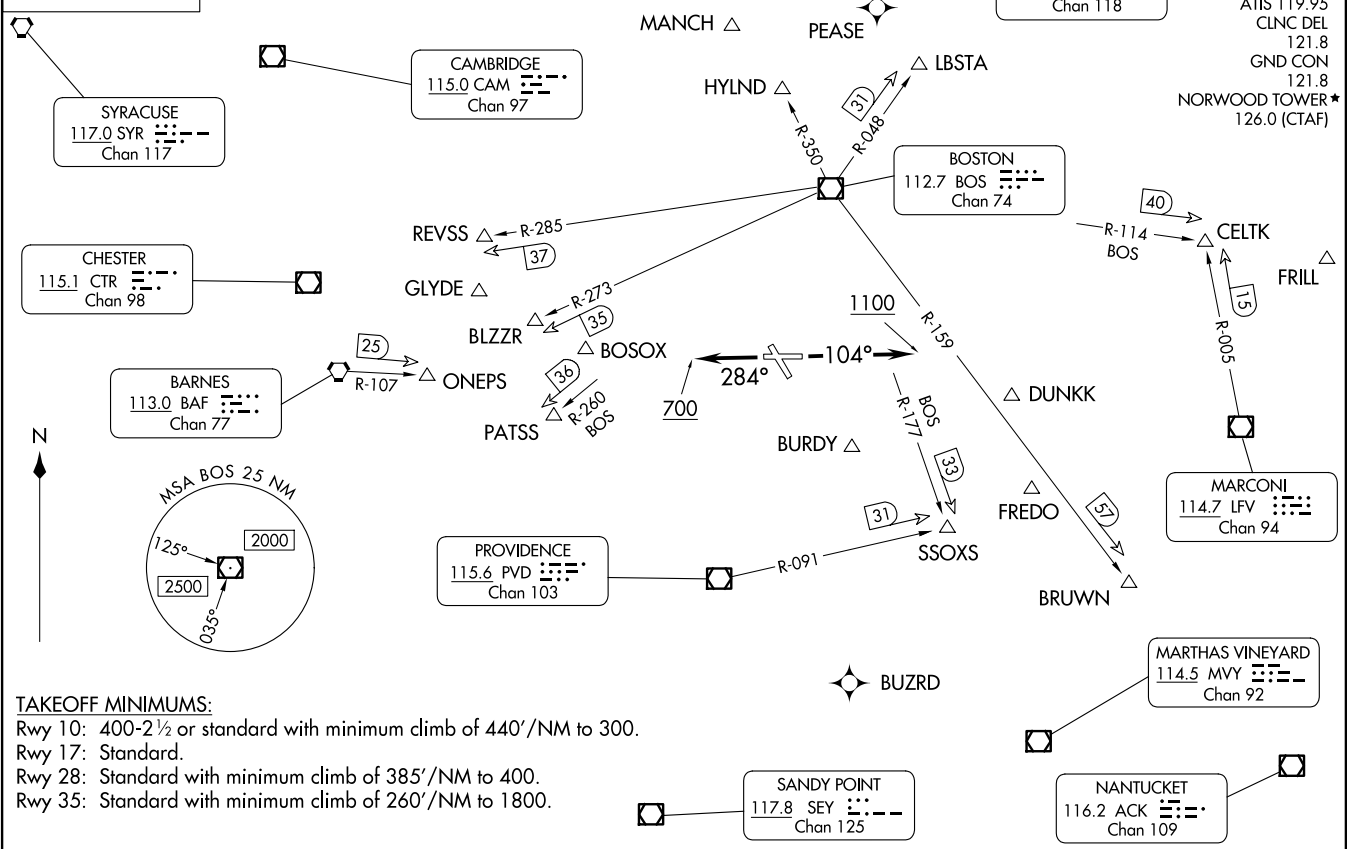
- Rwy 10: 400-2½ or standard with minimum climb of 440'/NM to 300.
- Rwy 17: Standard.
- Rwy 28: Standard with minimum climb of 385'/NM to 400.
- Rwy 35: Standard with minimum climb of 260'/NM to 1800.

NOTE: Chart not to scale.

(CONTINUED ON FOLLOWING PAGE)

NORWOOD, MASSACHUSETTS
NORWOOD MEML (OWD)

NORWOOD MEML (OWD)
NORWOOD, MASSACHUSETTS



NORWOOD FIVE DEPARTURE



DEPARTURE ROUTE DESCRIPTION

TAKEOFF RUNWAY 10: Climb on heading 104° to 1100, then as assigned by ATC, thence

TAKEOFF RUNWAY 17: Climb on assigned heading, thence...

TAKEOFF RUNWAY 28: Climb on heading 284° to 700, then as assigned by ATC, thence

TAKEOFF RUNWAY 35: Climb on heading 280° CW 330° as assigned by ATC, thence

. . . . for RADAR vectors to assigned route/NAVAID/fix. Maintain 2000. Expect clearance to filed altitude/flight level within ten (10) minutes after departure.

- NOTE: BLZZR DEPARTURES expect vectors on BOS R-273.
- NOTE: BRUWN DEPARTURES expect vectors on BOS R-159.
- NOTE: CELTK DEPARTURES expect vectors on BOS R-114.
- NOTE: HYLND DEPARTURES expect vectors on BOS R-350.
- NOTE: PATSS DEPARTURES expect vectors on BOS R-260.
- NOTE: REVSS DEPARTURES expect vectors on BOS R-285.
- NOTE: SSOXS DEPARTURES expect vectors on BOS R-177.

NE-1, 19 MAR 2026 to 16 APR 2026

NE-1, 19 MAR 2026 to 16 APR 2026