

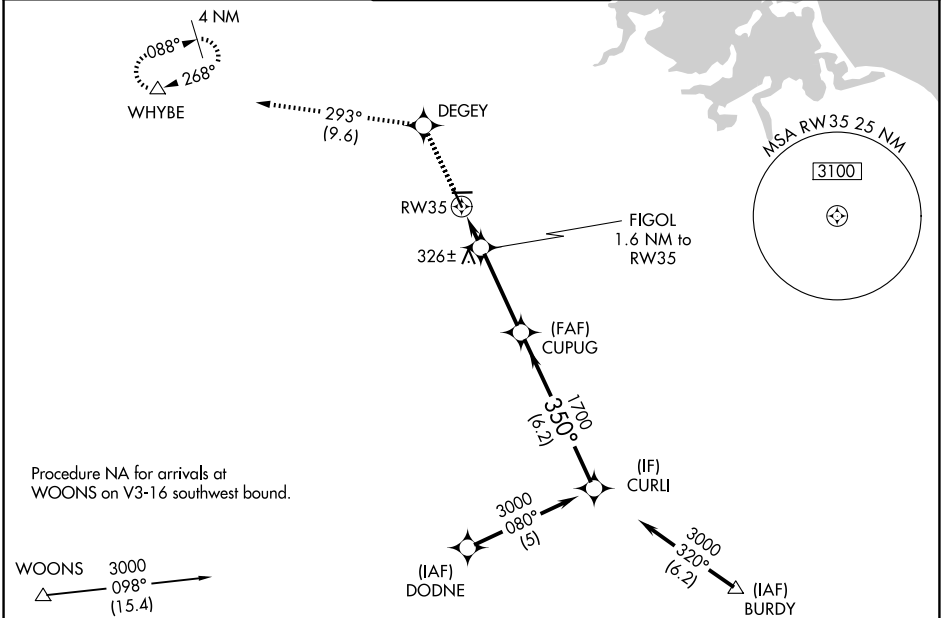
WAAS CH 86400 W35A	APP CRS 350°	Rwy Ldg TDZE Apt Elev	4007 49 49
----------------------------------------	------------------------	-----------------------------	---------------------------------------

RNAV (GPS) RWY 35

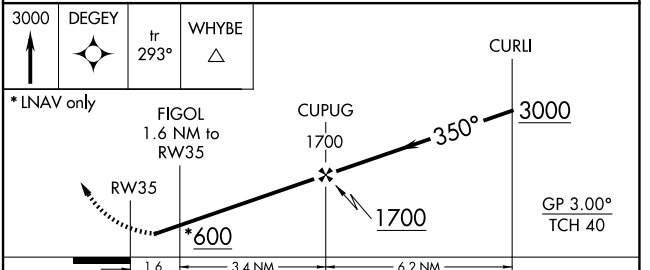
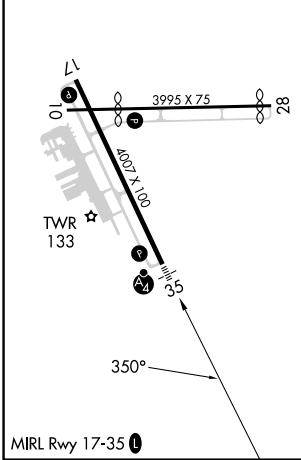
NORWOOD MEML (OWD)

RNP APCH.	MALSF	MISSED APPROACH: Climb to 3000 direct DEGEY and on track 293° to WHYBE and hold, continue climb-in-hold to 3000.
<p>▼ Rwy 35 helicopter visibility reduction below 3/4 SM NA. For inop ALS, increase LPV all Cats visibility to 7/8 SM. For uncompensated Baro-VNAV systems, LNAV/VNAV NA below -15°C or above 48°C. Circling NA at night.</p>		

ATIS 119.95	BOSTON APP CON 124.1 263.1	NORWOOD TOWER ★ 126.0 (CTAF) 0	GND CON 121.8	CLNC DEL 121.8
-----------------------	--------------------------------------	------------------------------------------	-------------------------	--------------------------



ELEV 49	D	TDZE 49
---------	----------	---------



CATEGORY	A	B	C	D
LPV DA	344-3/4 295 (300-3/4)			
LNAV/VNAV DA	594-1 3/8 545 (600-1 3/8)			
LNAV MDA	580-3/4	531 (600-3/4)	580-1 1/4	531 (600-1 1/4)
CIRCLING	600-1 551 (600-1)	700-1 651 (700-1)	1220-3	1171 (1200-3)

NE-1, 19 MAR 2026 to 16 APR 2026

NE-1, 19 MAR 2026 to 16 APR 2026