

TACAN RWY 18

TACAN HRT Chan 45	APCH CRS 183°	Rwy ldg TDZE Arprt Elev	9600 35 38
----------------------	------------------	-------------------------------	------------------

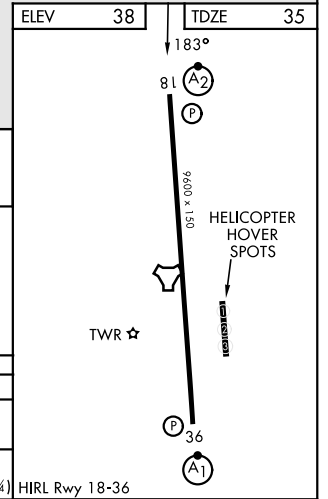
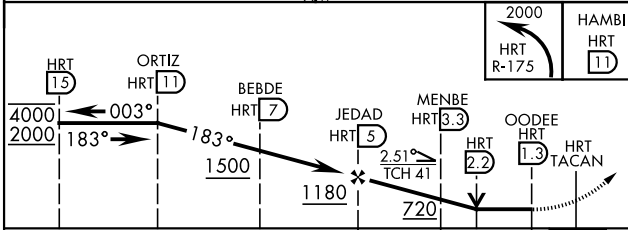
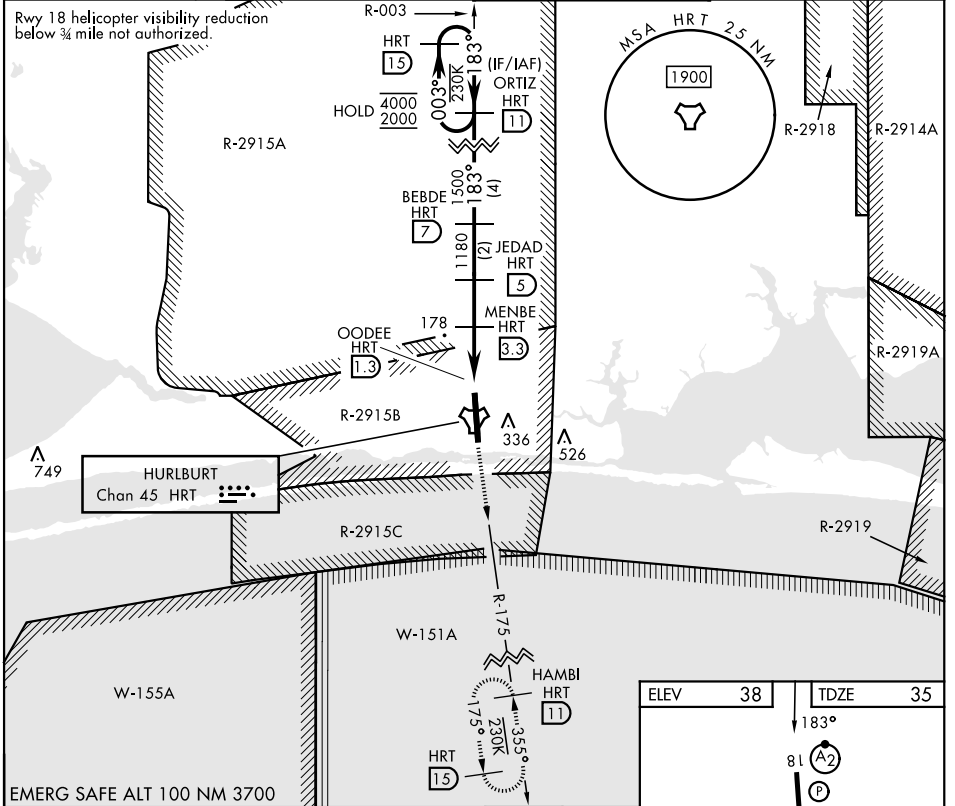
[USAF]

HURLBURT FLD (KHRT)

RNAV or RADAR required.	SALSF (A2)	MISSED APPROACH: Climb to 2000 on R-175 to HAMB/11 DME and hold.
-------------------------	---------------	--

ATIS 134.475 360.675	EGLN APP CON 125.1 281.45 (271°- 089°) 132.1 360.6 (090°- 270°)	TOWER 126.5 351.675	GND CON 123.975 275.8
-------------------------	---	------------------------	--------------------------

Rwy 18 helicopter visibility reduction below 3/4 mile not authorized.



CATEGORY	A	B	C	D	E
S-18 *	440-3/4	405 (500-3/4)	440-1	405	(500-1)
CIRCLING	640-1	602 (700-1)	640-1 3/4 602 (700-1 3/4)	840-2 1/2 802 (900-2 1/2)	840-2 3/4 802 (900-2 3/4)

HIRL Rwy 18-36

TACAN RWY 18

SE-3, 19 MAR 2026 to 16 APR 2026

SE-3, 19 MAR 2026 to 16 APR 2026