

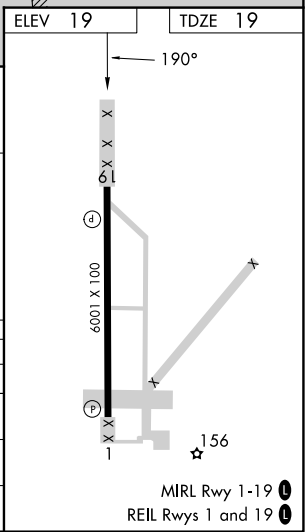
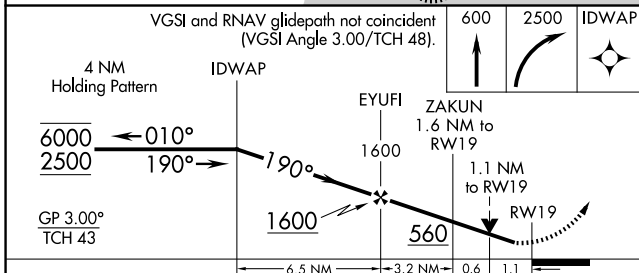
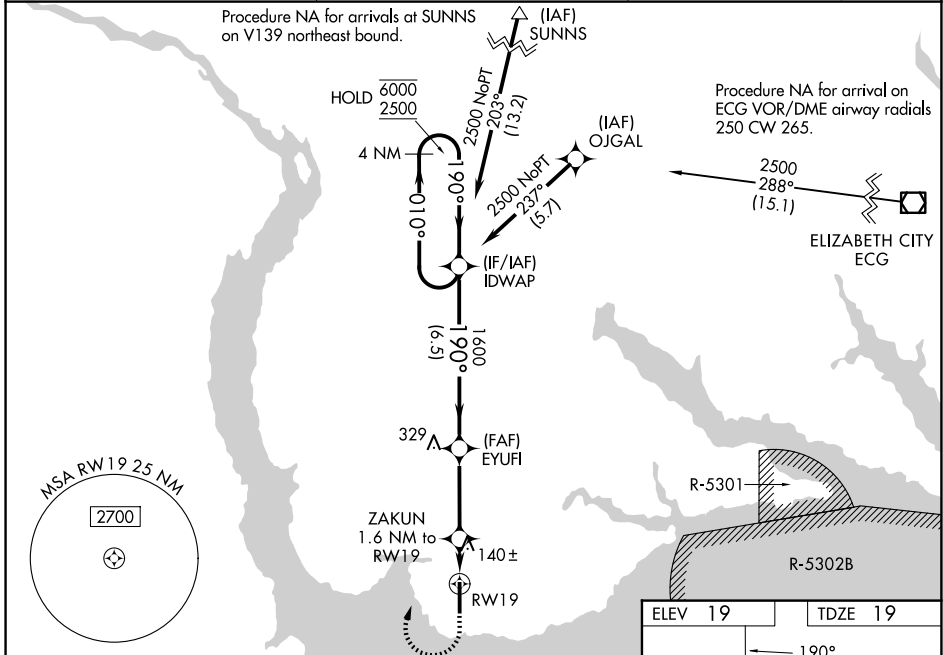
WAAS CH <b>90503</b> <b>W19A</b>	APP CRS <b>190°</b>	Rwy Ldg TDZE Apt Elev	<b>6001</b> <b>19</b> <b>19</b>
--	------------------------	-----------------------------	---------------------------------------

# RNAV (GPS) RWY 19

NORTHEASTERN RGNL (E/D/E)

RNP APCH - GPS.	<p>▼ For uncompensated Baro-VNAV systems, LNAV/VNAV NA below -1.5°C or above 54°C. Rwy 19 helicopter visibility reduction below 3/4 SM NA. Baro-VNAV NA when using ECG altimeter setting. When local altimeter setting not received, use ECG altimeter setting and increase LPV DA to 276 feet; increase LNAV/VNAV DA to 355 feet and all visibilities 1/8 SM. Increase all MDAs 60 feet and LNAV visibility Cat C/D 1/4 SM, and Circling visibility Cat C 1/4 SM. VDP NA with ECG altimeter setting.</p>	MISSED APPROACH: Climb to 600 then climbing right turn to 2500 direct IDWAP and hold.
-----------------	---	--

AWOS-3 <b>118.275</b>	WASHINGTON CENTER <b>123.85 279.65</b>	UNICOM <b>123.0 (CTAF) 0</b>
--------------------------	---	---------------------------------



CATEGORY	A	B	C	D
LPV DA		219-3/4	200 (200-3/4)	
LNAV/VNAV DA		298-7/8	279 (300-7/8)	
LNAV MDA	400-1	381 (400-1)	400-1 1/8	381 (400-1 1/8)
CIRCLING	520-1	501 (600-1)	560-1 1/2 541 (600-1 1/2)	580-2 561 (600-2)

SE-2, 19 MAR 2026 to 16 APR 2026

SE-2, 19 MAR 2026 to 16 APR 2026