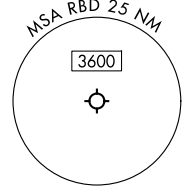


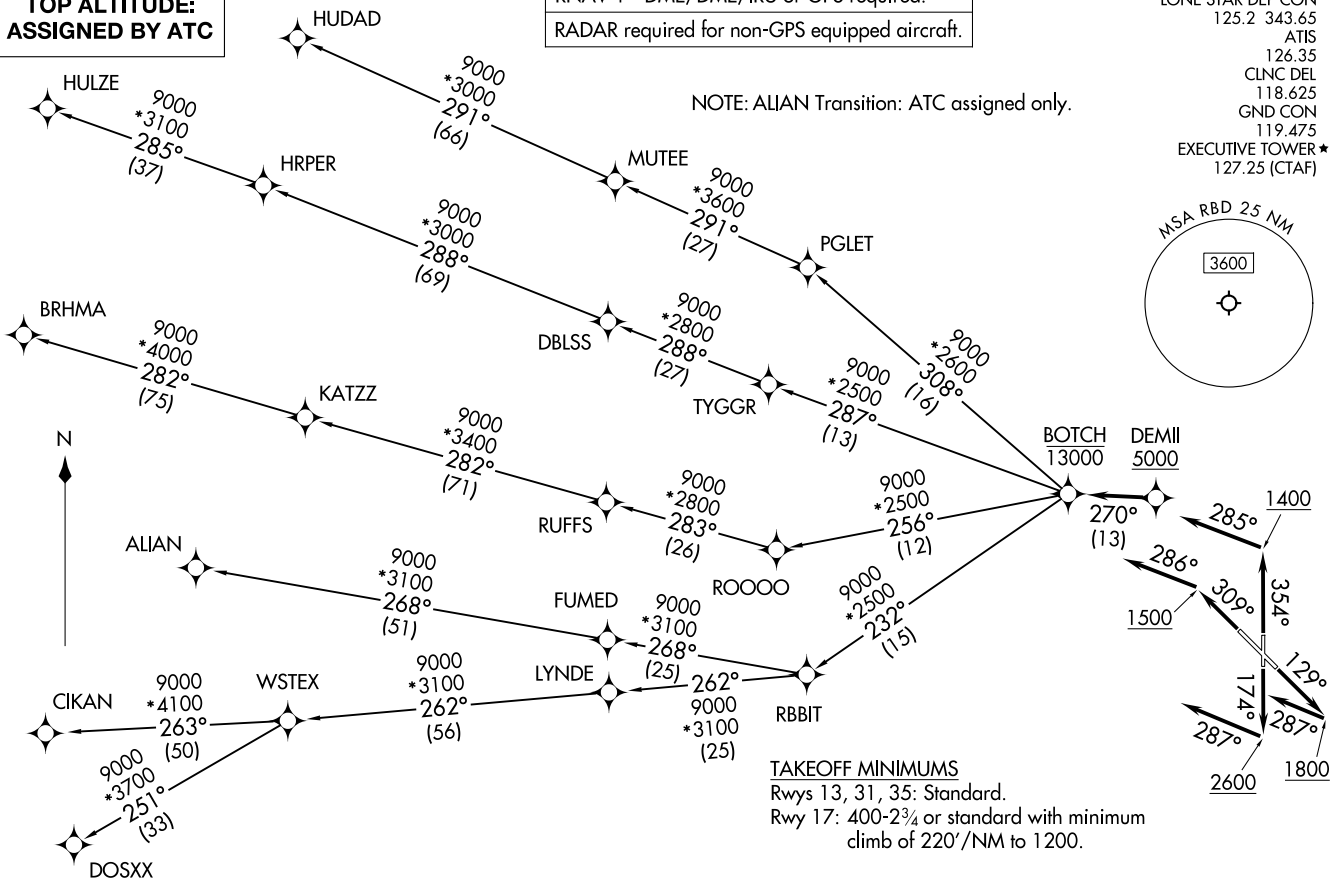
RNAV 1 - DME/DME/IRU or GPS required.  
RADAR required for non-GPS equipped aircraft.

LONE STAR DEP CON  
125.2 343.65  
ATIS  
126.35  
CLNC DEL  
118.625  
GND CON  
119.475  
EXECUTIVE TOWER ★  
127.25 (CTAF)

NOTE: ALIAN Transition: ATC assigned only.



TOP ALTITUDE:  
ASSIGNED BY ATC



TAKEOFF MINIMUMS  
Rwys 13, 31, 35: Standard.  
Rwy 17: 400-2¾ or standard with minimum  
climb of 220'/NM to 1200.

(CONTINUED ON FOLLOWING PAGE)

NOTE: Chart not to scale.

BOTCH ONE DEPARTURE (RNAV)  
(BOTCH1 .BOTCH) 17ZAPR25

(BOTCH1 .BOTCH) 25107  
AL:742 (FAA)

DALLAS, TEXAS  
DALLAS EXEC (RBD)

DALLAS EXEC (RBD)  
DALLAS, TEXAS

**BOTCH ONE DEPARTURE (RNAV)**



**DEPARTURE ROUTE DESCRIPTION**

TAKEOFF RUNWAY 13: Climb on heading 129° to 1800, then on heading 287° or as assigned by ATC, for vectors to cross DEMII at or above 5000, thence. . .

TAKEOFF RUNWAY 17: Climb on heading 174° to 2600, then on heading 287° or as assigned by ATC, for vectors to cross DEMII at or above 5000, thence. . .

TAKEOFF RUNWAY 31: Climb on heading 309° to 1500, then on heading 286° or as assigned by ATC, for vectors to cross DEMII at or above 5000, thence. . .

TAKEOFF RUNWAY 35: Climb on heading 354° to 1400, then on heading 285° or as assigned by ATC, for vectors to cross DEMII at or above 5000, thence. . .

. . .on track 270° to cross BOTCH at or below 13000, then on (transition). Maintain ATC assigned altitude, expect filed altitude 10 minutes after departure.

ALIAN TRANSITION (BOTCH1.ALIAN)

BRHMA TRANSITION (BOTCH1.BRHMA)

CIKAN TRANSITION (BOTCH1.CIKAN)

DOSXX TRANSITION (BOTCH1.DOSXX)

HUDAD TRANSITION (BOTCH1.HUDAD)

HULZE TRANSITION (BOTCH1.HULZE)

WSTEX TRANSITION (BOTCH1.WSTEX)

SC-2, 19 MAR 2026 to 16 APR 2026

SC-2, 19 MAR 2026 to 16 APR 2026