

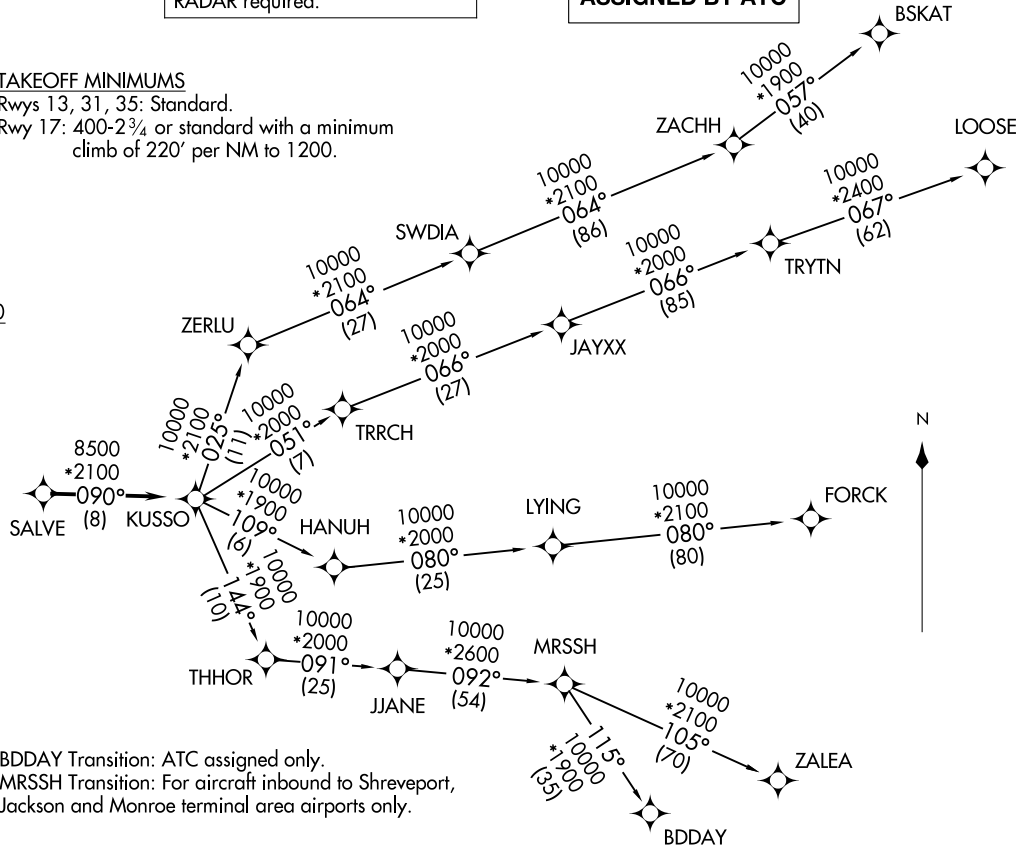
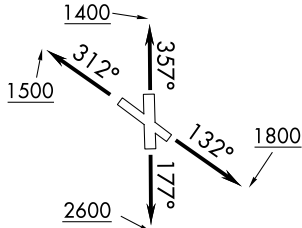
RNAV 1 - DME/DME/IRU or GPS.
 RADAR required.

**TOP ALTITUDE:
 ASSIGNED BY ATC**

TAKEOFF MINIMUMS

Rwys 13, 31, 35: Standard.
 Rwy 17: 400-2¾ or standard with a minimum
 climb of 220' per NM to 1200.

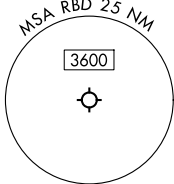
LONE STAR DEP CON
 125.2 343.65
 ATIS
 126.35
 CLNC DEL
 118.625
 GND CON
 119.475
 EXECUTIVE TOWER ★
 127.25 (CTAF)



NOTE: BDDAY Transition: ATC assigned only.
 NOTE: MRSSH Transition: For aircraft inbound to Shreveport,
 Jackson and Monroe terminal area airports only.

(CONTINUED ON FOLLOWING PAGE)

NOTE: Chart not to scale.



KUSSO TWO DEPARTURE (RNAV)
 (KUSSO2.KUSSO) 22JAN26

DALLAS, TEXAS
 DALLAS EXEC (RBD)

(KUSSO2.KUSSO) 26022
 KUSSO TWO DEPARTURE (RNAV)

DALLAS, TEXAS
 DALLAS EXEC (RBD)

AL742 (FAA)

KUSSO TWO DEPARTURE (RNAV)



DEPARTURE ROUTE DESCRIPTION

TAKEOFF RUNWAY 13: Climb on heading 132° to 1800 before turning westbound.

TAKEOFF RUNWAY 17: Climb on heading 177° to 2600 before turning westbound.

TAKEOFF RUNWAY 31: Climb on heading 312° to 1500 before turning southbound.

TAKEOFF RUNWAY 35: Climb on heading 357° to 1400 before turning southbound.

When entering controlled airspace, fly heading assigned by ATC, expect vector to SALVE, then on track 090° to KUSSO, then on assigned transition. Maintain ATC assigned altitude, expect filed altitude 10 minutes after departure.

BDDAY TRANSITION (KUSSO2.BDDAY)

BSKAT TRANSITION (KUSSO2.BSKAT)

FORCK TRANSITION (KUSSO2.FORCK)

LOOSE TRANSITION (KUSSO2.LOOSE)

MRSSH TRANSITION (KUSSO2.MRSSH)

ZALEA TRANSITION (KUSSO2.ZALEA)

SC-2, 19 MAR 2026 to 16 APR 2026

SC-2, 19 MAR 2026 to 16 APR 2026