

APP CRS	Rwy Ldg	3751
181°	TDZE	534
	Apt Elev	537

RNAV (GPS) RWY 18

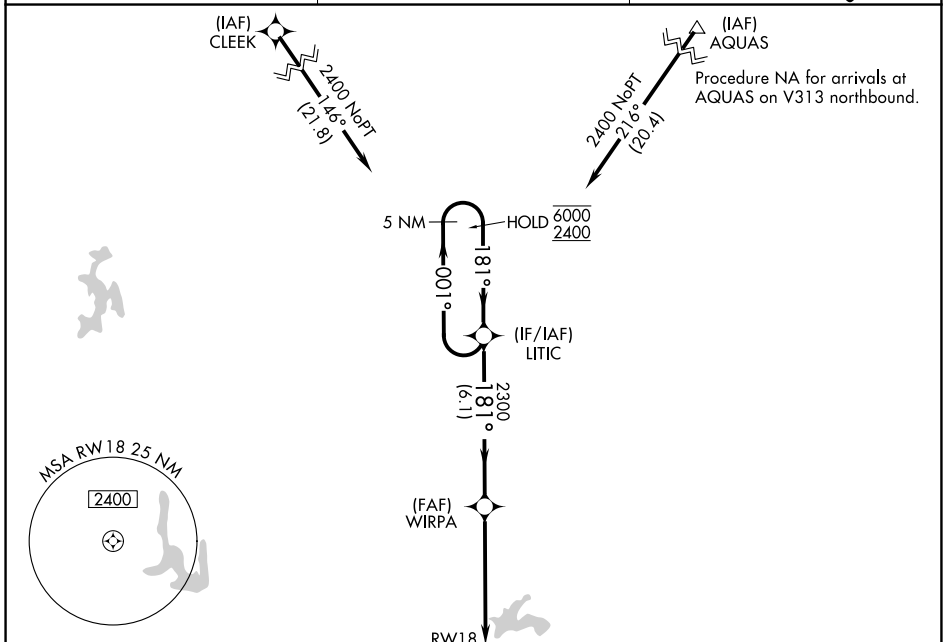
VANDALIA MUNI (VLA)

RNP APCH - GPS.

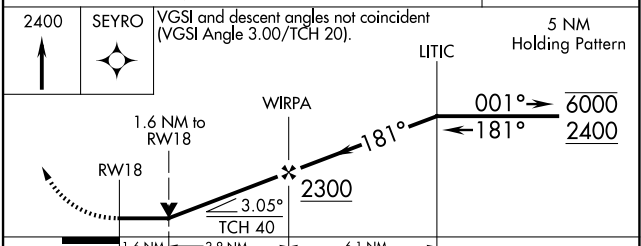
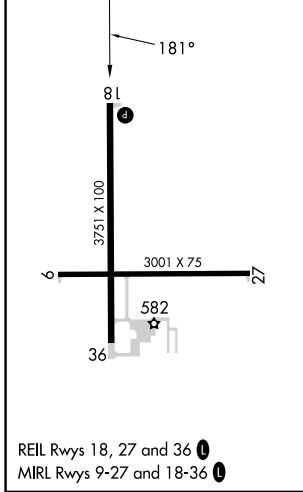
⚠ Rwy 18 helicopter visibility reduction below 3/4 SM NA. When local altimeter setting not received, use Salem altimeter setting; increase all MDAs 60 feet and visibility Cats C and D 1/4 SM.

MISSED APPROACH: Climb to 2400 direct SEYRO and hold.

AWOS-AV 122.8	KANSAS CITY CENTER 124.3 269.15	UNICOM 122.8 (CTAF) 0
-------------------------	---	---------------------------------



ELEV	537	TDZE	534
------	------------	------	------------



CATEGORY	A	B	C	D
LNAV MDA	1060-1	526 (600-1)	1060-1 1/2	526 (600-1 1/2)
CIRCLING	1060-1	523 (600-1)	1060-1 1/2 523 (600-1 1/2)	1220-2 1/4 683 (700-2 1/4)