

RNAV 1-DME/DME/IRU or GPS.
RADAR required.

**TOP ALTITUDE:
4000**

D-ATIS 135.0
CLNC DEL 128.4
CPDLC 121.4
GND CON 121.4
FORT LAUDERDALE TOWER 119.3 257.8
MIAMI DEP CON 126.05 251.1

(HROCK2:HROCK) 23110
HROCK TWO DEPARTURE (RNAV)

AL-744 (FAA)

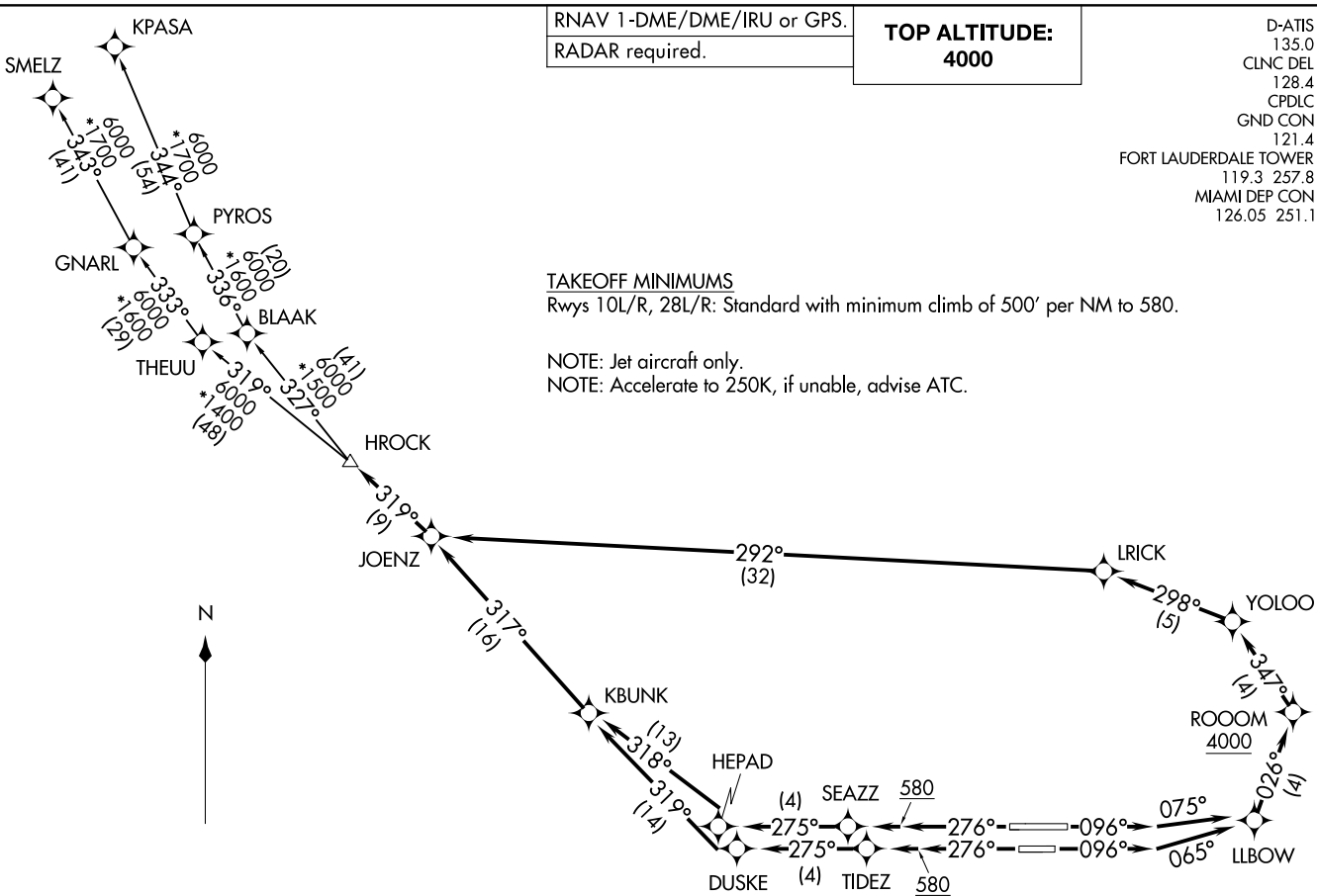
FORT LAUDERDALE/HOLLYWOOD INTL (FLL)
FORT LAUDERDALE, FLORIDA

TAKEOFF MINIMUMS

Rwys 10L/R, 28L/R: Standard with minimum climb of 500' per NM to 580.

NOTE: Jet aircraft only.

NOTE: Accelerate to 250K, if unable, advise ATC.



(NARRATIVE ON FOLLOWING PAGE)

NOTE: Chart not to scale.

HROCK TWO DEPARTURE (RNAV)
(HROCK2:HROCK) 20APR23

FORT LAUDERDALE, FLORIDA
FORT LAUDERDALE/HOLLYWOOD INTL (FLL)



DEPARTURE ROUTE DESCRIPTION

SEE ADDITIONAL REQUIREMENTS ON AAUP

TAKEOFF RUNWAY 10L: Climb on heading 096° to intercept course 075° to LLBOW, then on track 026° to cross ROOOM at or above 4000, then on track 347° to YOLOO, then on track 298° to LRICK, then on track 292° to JOENZ, thence. . . .

TAKEOFF RUNWAY 10R: Climb on heading 096° to intercept course 065° to LLBOW, then on track 026° to cross ROOOM at or above 4000, then on track 347° to YOLOO, then on track 298° to LRICK, then on track 292° to JOENZ, thence. . . .

TAKEOFF RUNWAY 28L: Climb on heading 276° to 580, then direct TIDEZ, then on track 275° to DUSKE, then on track 319° to KBUNK, then on track 317° to JOENZ, thence. . . .

TAKEOFF RUNWAY 28R: Climb on heading 276° to 580, then direct SEAZZ, then on track 275° to HEPAD, then on track 318° to KBUNK, then on track 317° to JOENZ, thence. . . .

. . . .on track 319° to HROCK, then on assigned transition. Maintain 4000, expect filed altitude within 10 minutes after departure.

KPASA TRANSITION (HROCK2.KPASA)

SMELZ TRANSITION (HROCK2.SMELZ)

SE-3, 19 MAR 2026 to 16 APR 2026

SE-3, 19 MAR 2026 to 16 APR 2026