

(SAKKI.SAKKIS) 23334
SAKKI FIVE ARRIVAL

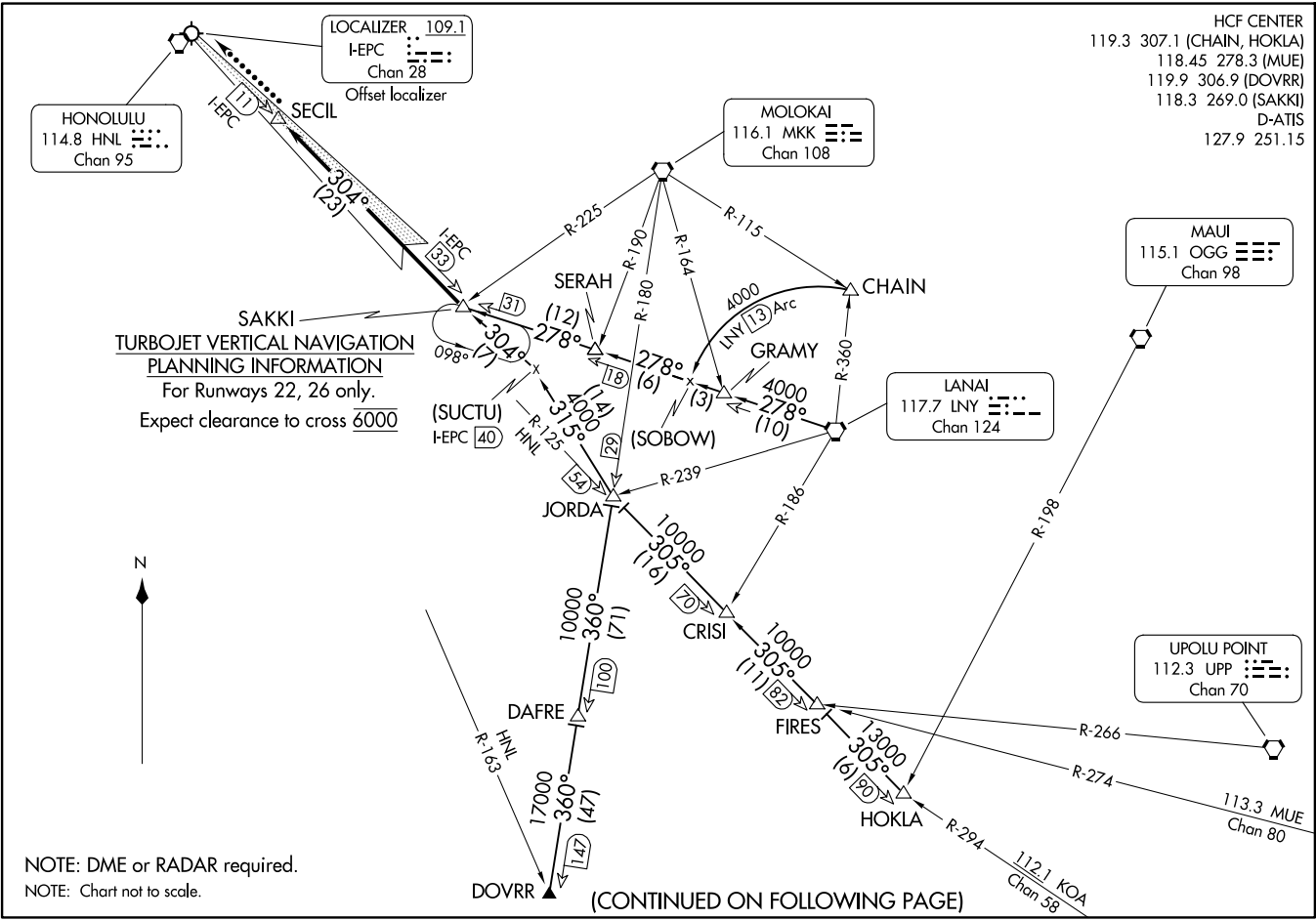
AL-754 (FAA)

DANIEL K INOUYE INTL (HNL) (PHNL)
HONOLULU, HAWAII

HCF CENTER
119.3 307.1 (CHAIN, HOKLA)
118.45 278.3 (MUE)
119.9 306.9 (DOVRR)
118.3 269.0 (SAKKI)
D-ATIS
127.9 251.15

SAKKI FIVE ARRIVAL
(SAKKI.SAKKIS) 25AUG11

HONOLULU, HAWAII
DANIEL K INOUYE INTL (HNL) (PHNL)



NOTE: DME or RADAR required.
NOTE: Chart not to scale.

(CONTINUED ON FOLLOWING PAGE)

ARRIVAL ROUTE DESCRIPTION

CHAIN TRANSITION (CHAIN.SAKKI5): From over CHAIN INT on LNY 13 DME CCW arc to SOBOW and LNY R-278 to SAKKI INT. Thence. . . .

DOVRR TRANSITION (DOVRR.SAKKI5): From over DOVRR on MKK R-180 to JORDA, turn left heading 315° to join I-EPC LDA course at SUCTU 40 DME then to SAKKI INT. Thence. . . .

HOKLA TRANSITION (HOKLA.SAKKI5): From over HOKLA on HNL R-125 to JORDA, turn right heading 315° to join I-EPC LDA course at SUCTU 40 DME then to SAKKI INT. Thence. . . .

LANAI TRANSITION (LNY.SAKKI5): From over LNY VORTAC on LNY R-278 to SAKKI INT. Thence. . . .

. . . .For runways 22, 26 only: From over SAKKI INT on the LDA/DME RWY 26L course to SECIL 11 DME.

LOST COMMUNICATIONS: At SECIL INT/WP proceed with the LDA/DME RWY 26L approach.

PAC: 19 MAR 2026 to 14 MAY 2026

PAC: 19 MAR 2026 to 14 MAY 2026