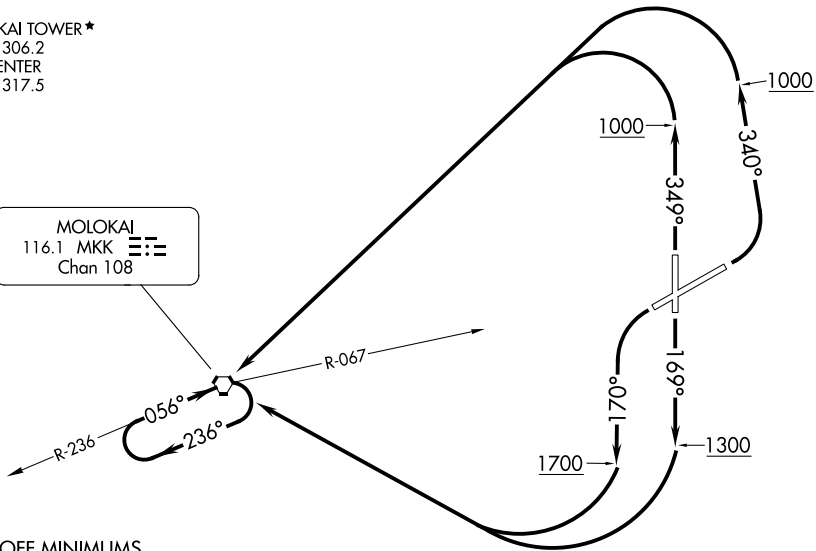


ATIS
128.2
GND CON
121.9
MOLOKAI TOWER*
125.7 306.2
HCF CENTER
124.1 317.5

MOLOKAI
116.1 MKK 
Chan 108



TAKEOFF MINIMUMS

Rwy 17: Standard.

Rwy 5: 300-1 with minimum climb of 325' per NM to 1500 or standard with minimum climb of 540' per NM to 800 or 1500-2 1/2 for climb in visual conditions.

Rwy 35: 300-1 or standard with minimum climb of 535' per NM to 800.

Rwy 23: Standard with minimum climb of 435' per NM to 1500 or 1500-2 1/2 for climb in visual conditions.

(CONTINUED ON FOLLOWING PAGE)

NOTE: Chart not to scale.

DEPARTURE ROUTE DESCRIPTION

TAKEOFF RUNWAY 5: Climbing left turn heading 340° to 1000 then climbing left turn direct MKK VORTAC, thence. . . .

TAKEOFF RUNWAY 17: Climb heading 169° to 1300 then climbing right turn direct MKK VORTAC, thence. . . .

TAKEOFF RUNWAY 23: Climbing left turn heading 170° to 1700 then climbing right turn direct MKK VORTAC, thence. . . .

TAKEOFF RUNWAY 35: Climb heading 349° to 1000 then climbing left turn direct MKK VORTAC, thence. . . .

VCOA RUNWAYS 5 and 23: Obtain ATC approval for VCOA when requesting IFR clearance. Climb in visual conditions to cross Molokai Airport southwest bound at or above 1800 on MKK R-067 to MKK VORTAC, thence. . . .

. . . .climb in MKK VORTAC hold pattern to cross MKK at or above MEA/MCA for route of flight.

TAKEOFF OBSTACLE NOTES

- Rwy 5: Rising terrain and vehicles on roadway beginning 14' from DER, 238' right of centerline, up to 17' AGL/476' MSL.
 Vehicles on roadway beginning 28' from DER, 484' left of centerline, up to 17' AGL/509' MSL.
 Multiple fences and bushes beginning 49' from DER, 95' left of centerline, up to 21' AGL/480' MSL.
 Multiple fences and bushes beginning 437' from DER, 65' right of centerline, up to 31' AGL/490' MSL.
 Multiple trees and bushes beginning 735' from DER, 496' left of centerline, up to 27' AGL/551' MSL.
 Multiple bushes and vehicles on roadway beginning 950' from DER, left and right of centerline, up to 17' AGL/552' MSL.
 Electrical system 1367' from DER, 78' right of centerline, 35' AGL/528' MSL.
 Multiple towers, poles and trees beginning 1887' from DER, 33' right of centerline, up to 43' AGL/602' MSL.
 Multiple towers, poles and trees beginning 2386' from DER, 644' left of centerline, up to 60' AGL/617' MSL.
- Rwy 17: Bush 46' from DER, 266' right of centerline, 13' AGL/443' MSL.
 Vehicles on roadway beginning 124' from DER, 505' left of centerline, up to 17' AGL/443' MSL.
 Vehicles on roadway beginning 484' from DER, 590' right of centerline, up to 17' AGL/443' MSL.
- Rwy 23: Trees beginning 691' from DER, 491' left of centerline, up to 77' AGL/470' MSL.
 Trees beginning 1.9 NM from DER, 2279' left of centerline, up to 60' AGL/880' MSL.
 Trees beginning 2.2 NM from DER, 541' left of centerline, up to 60' AGL/1208' MSL.
- Rwy 35: Bush 28' from DER, 288' left of centerline, 12' AGL/461' MSL.
 Bush 48' from DER, 118' right of centerline, 14' AGL/463' MSL.
 Fence beginning 70' from DER, on centerline through 35' left of centerline, 4' AGL/460' MSL.
 Multiple bushes vehicles on roadway and trees beginning 107' from DER, 48' right of centerline, up to 65' AGL/514' MSL.
 Bushes beginning 133' from DER, 34' left of centerline, up to 26' AGL/489' MSL.
 Bushes beginning 1170' from DER, 259' right of centerline, up to 15' AGL/514' MSL.
 Trees beginning 2286' from DER, 407' right of centerline, up to 90' AGL/615' MSL.
 Trees beginning 2942' from DER, 75' right of centerline, up to 123' AGL/648' MSL.

PAC: 19 MAR 2026 to 14 MAY 2026

PAC: 19 MAR 2026 to 14 MAY 2026