

(JELIE) JELIE 24193

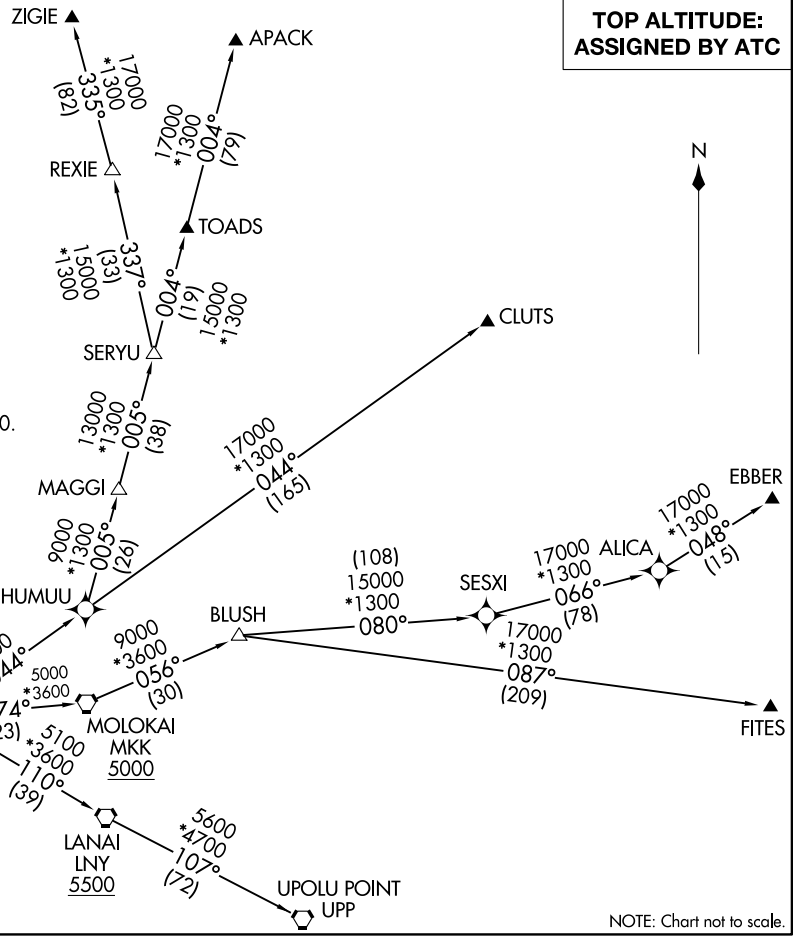
JELIE ONE DEPARTURE (RNAV)

AL-761 (FAA)

KALAELOA (JOHN RODGERS FLD) (JRF)(PHTR)

KAROLEI, HAWAII

**TOP ALTITUDE:  
ASSIGNED BY ATC**



PAC, 19 MAR 2026 to 14 MAY 2026

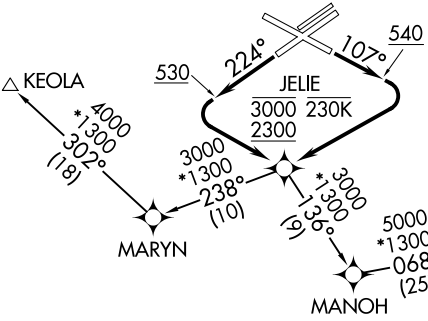
PAC, 19 MAR 2026 to 14 MAY 2026

ATIS  
119.8  
CLNC DEL  
121.7 380.5  
GND CON  
123.8 336.4  
KALAELOA TOWER\*  
132.6 340.2  
HCF DEP CON  
118.3 269.0

NOTE: RNAV1.  
NOTE: RADAR required.  
NOTE: GPS required.  
NOTE: Turbojet and turboprop aircraft only.

**TAKEOFF MINIMUMS**

Rwys 4L/R, 22R, 29: NA- ATC.  
Rwy 11: Standard.  
Rwy 22L: Standard with minimum climb of 260' per NM to 530.



(NARRATIVE ON FOLLOWING PAGE)

NOTE: Chart not to scale.

JELIE ONE DEPARTURE (RNAV)  
(JELIE) JELIE 25FEB21

KAROLEI, HAWAII  
KALAELOA (JOHN RODGERS FLD) (JRF)(PHTR)



DEPARTURE ROUTE DESCRIPTION

TAKEOFF RUNWAY 11: Climb on heading 107° to 540, then climbing right turn direct JELIE. Cross JELIE between 2300 and 3000, at or below 230K, thence. . . .

TAKEOFF RUNWAY 22L: Climb on heading 224° to 530, then climbing left turn direct JELIE. Cross JELIE between 2300 and 3000, at or below 230K, thence. . . .

. . . (transition), maintain ATC assigned altitude. Expect filed altitude 10 minutes after departure.

APACK TRANSITION (JELIE1 .APACK)

CLUTS TRANSITION (JELIE1 .CLUTS)

EBBER TRANSITION (JELIE1 .EBBER)

FITES TRANSITION (JELIE1 .FITES)

KEOLA TRANSITION (JELIE1 .KEOLA)

MOLOKAI TRANSITION (JELIE1 .MKK)

UPOLU POINT TRANSITION (JELIE1 .UPP)

ZIGIE TRANSITION (JELIE1 .ZIGIE)

PAC: 19 MAR 2026 to 14 MAY 2026

PAC: 19 MAR 2026 to 14 MAY 2026