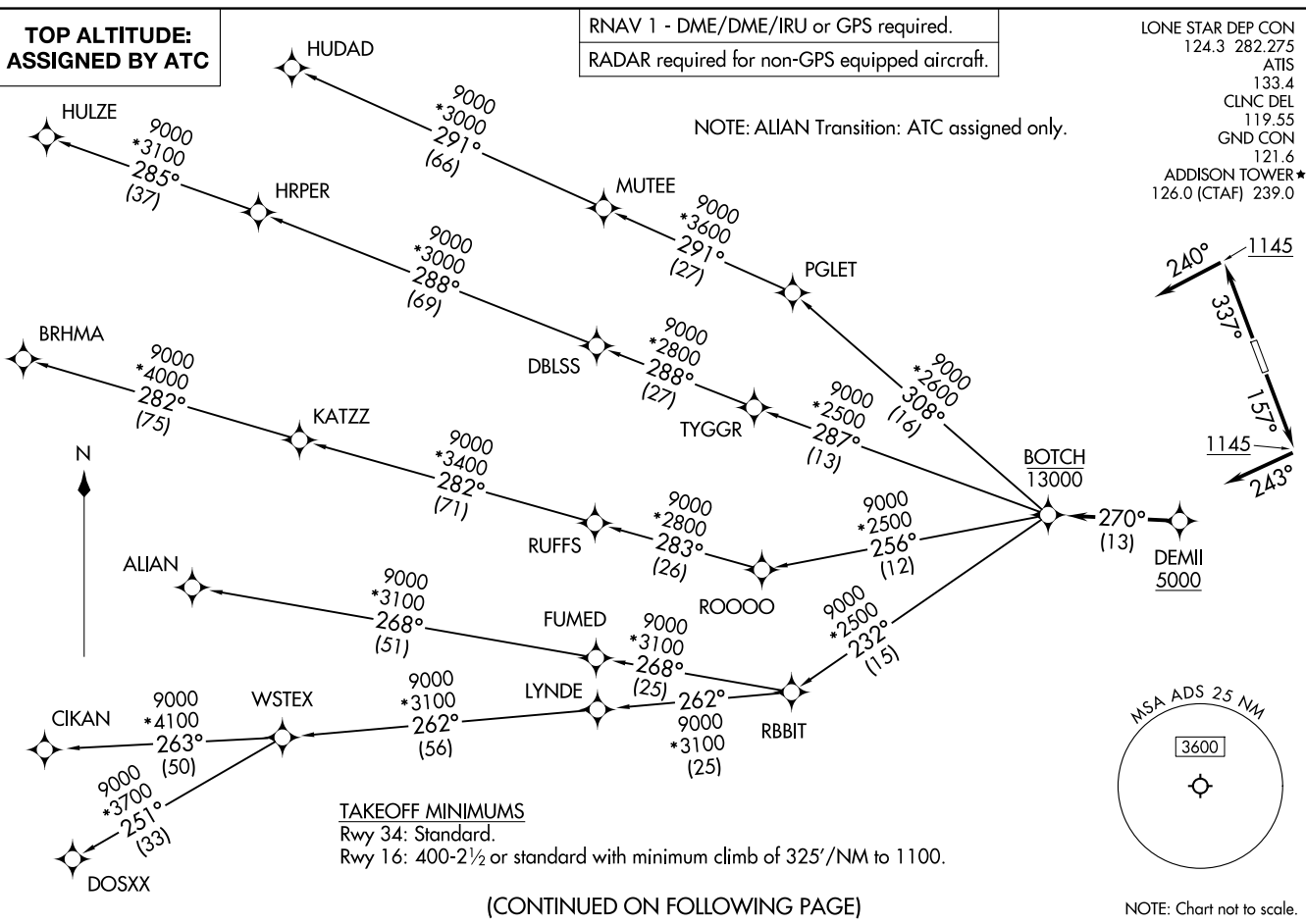
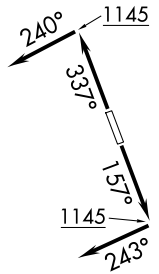


RNAV 1 - DME/DME/IRU or GPS required.
 RADAR required for non-GPS equipped aircraft.

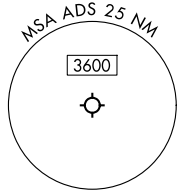
**TOP ALTITUDE:
 ASSIGNED BY ATC**

LONE STAR DEP CON
 124.3 282.275
 ATIS
 133.4
 CLNC DEL
 119.55
 GND CON
 121.6
 ADDISON TOWER*
 126.0 (CTAF) 239.0

NOTE: ALIAN Transition: ATC assigned only.



TAKEOFF MINIMUMS
 Rwy 34: Standard.
 Rwy 16: 400-2½ or standard with minimum climb of 325'/NM to 1100.



NOTE: Chart not to scale.

(CONTINUED ON FOLLOWING PAGE)

BOTCH ONE DEPARTURE (RNAV)
 (BOTCH1 .BOTCH) 17 APR 25

DALLAS, TEXAS
 ADDISON (ADS)

(BOTCH1 .BOTCH) 25107
 BOTCH ONE DEPARTURE (RNAV)
 AL788 (FAA)

ADDISON (ADS)
 DALLAS, TEXAS

BOTCH ONE DEPARTURE (RNAV)



DEPARTURE ROUTE DESCRIPTION

TAKEOFF RUNWAY 16: Climb on heading 157° to 1145, then on heading 243° or as assigned by ATC, for vectors to cross DEMIL at or above 5000, thence. . .

TAKEOFF RUNWAY 34: Climb on heading 337° to 1145, then on heading 240° or as assigned by ATC, for vectors to cross DEMIL at or above 5000, thence. . .

. . . on track 270° to cross BOTCH at or below 13000, then on (transition). Maintain ATC assigned altitude, expect filed altitude 10 minutes after departure.

ALIAN TRANSITION (BOTCH1.ALIAN)

BRHMA TRANSITION (BOTCH1.BRHMA)

CIKAN TRANSITION (BOTCH1.CIKAN)

DOSXX TRANSITION (BOTCH1.DOSXX)

HUDAD TRANSITION (BOTCH1.HUDAD)

HULZE TRANSITION (BOTCH1.HULZE)

WSTEX TRANSITION (BOTCH1.WSTEX)

SC-2, 19 MAR 2026 to 16 APR 2026

SC-2, 19 MAR 2026 to 16 APR 2026