

DALLAS (DALL4, TTT) 27NOV25

DALLAS FOUR DEPARTURE

DALLAS, TEXAS
ADDISON (ADS)

LONE STAR DEP CON
124.3 282.275
ATIS
133.4
CLNC DEL
119.55
GND CON
121.6
ADDISON TOWER*
126.0 (CTAF) 239.0

RADAR and DME required.

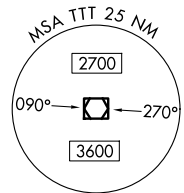
**TOP ALTITUDE:
ASSIGNED BY ATC**

BONHAM
114.6 BYP
Chan 93

MAVERICK
113.1 TTT
Chan 78

LITTLE ROCK
115.1 LIT
Chan 98

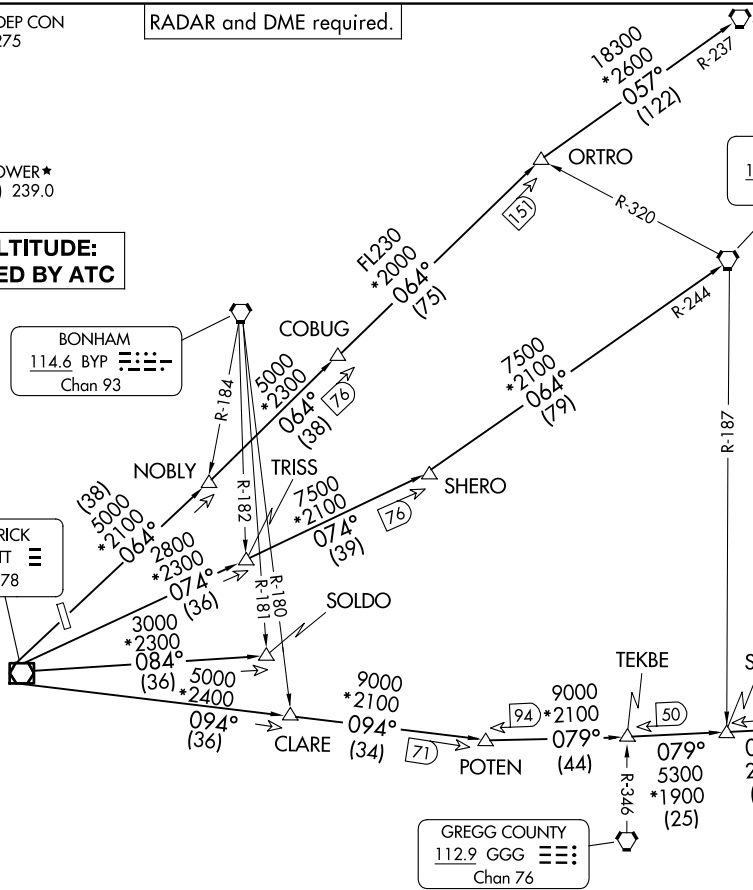
TEXARKANA
116.3 TXK
Chan 110



TAKEOFF MINIMUMS

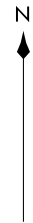
Rwy 34: Standard.
Rwy 16: 400-2 1/2 or standard with minimum
climb of 325'/NM to 1100.

NOTE: BELCHER Transition: For aircraft inbound to
the JAN, MLU, and SHV terminal areas only.
NOTE: SOLDO Transition: ATC assigned.



BELCHER
117.4 EIC
Chan 121

GREGG COUNTY
112.9 GGG
Chan 76



(CONTINUED ON FOLLOWING PAGE)

NOTE: Chart not to scale.

(DALL4, TTT) 25331

AL-768 (FAA)

ADDISON (ADS)
DALLAS, TEXAS

DALLAS FOUR DEPARTURE

DALLAS, TEXAS



DEPARTURE ROUTE DESCRIPTION

Fly assigned heading for RADAR vectors to appropriate route. Maintain ATC assigned altitude.

BELCHER TRANSITION (DALL4.EIC): From over TTT VOR/DME on TTT R-094 to POTEN, then on EIC R-259 to EIC VORTAC.

LITTLE ROCK TRANSITION (DALL4.LIT): From over TTT VOR/DME on TTT R-064 to ORTRO, then on LIT R-237 to LIT VORTAC.

SOLDO TRANSITION (DALL4.SOLDO): From over TTT VOR/DME on TTT R-084 to SOLDO.

TEXARKANA TRANSITION (DALL4.TXK): From over TTT VOR/DME on TTT R-074 to SHERO, then on TXK R-244 to TXK VORTAC.

SC-2, 19 MAR 2026 to 16 APR 2026

SC-2, 19 MAR 2026 to 16 APR 2026