

GARLAND SIX DEPARTURE
(GARL6.TT) 17APR25

DALLAS, TEXAS
ADDISON (ADS)

LONE STAR DEP CON
124.3 282.275
ATIS
133.4
CLNC DEL
119.55
GND CON
121.6
ADDISON TOWER ★
126.0 (CTAF) 239.0

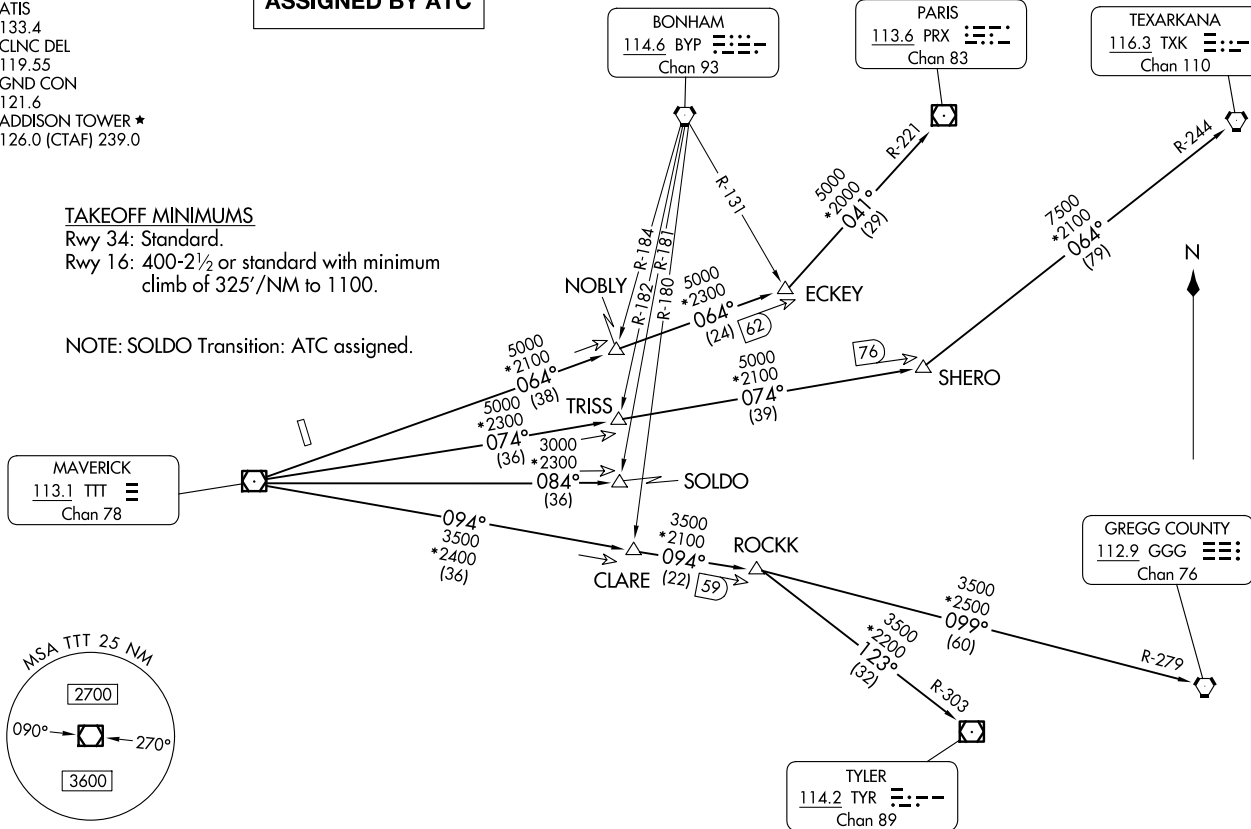
**TOP ALTITUDE:
ASSIGNED BY ATC**

RADAR and DME required.

TAKEOFF MINIMUMS

Rwy 34: Standard.
Rwy 16: 400-2½ or standard with minimum
climb of 325'/NM to 1100.

NOTE: SOLDO Transition: ATC assigned.



NOTE: Chart not to scale.

(CONTINUED ON FOLLOWING PAGE)

(GARL6.TT) 25107
GARLAND SIX DEPARTURE

AL-768 (FAA)

ADDISON (ADS)
DALLAS, TEXAS

GARLAND SIX DEPARTURE

DALLAS, TEXAS



DEPARTURE ROUTE DESCRIPTION

When entering controlled airspace, fly assigned heading for RADAR vectors to appropriate route. Maintain ATC assigned altitude.

GREGG COUNTY TRANSITION (GARL6.GGG): From over TTT VOR/DME on TTT R-094 to ROCKK, then on GGG R-279 to GGG VORTAC.

PARIS TRANSITION (GARL6.PRX): From over TTT VOR/DME on TTT R-064 to ECKEY, then on PRX R-221 to PRX VOR/DME.

SOLDO TRANSITION (GARL6.SOLDO): From over TTT VOR/DME on TTT R-084 to SOLDO.

TEXARKANA TRANSITION (GARL6.TXK): From over TTT VOR/DME on TTT R-074 to SHERO, then on TXK R-244 to TXK VORTAC.

TYLER TRANSITION (GARL6.TYR): From over TTT VOR/DME on TTT R-094 to ROCKK, then on TYR R-303 to TYR VOR/DME.

SC-2, 19 MAR 2026 to 16 APR 2026

SC-2, 19 MAR 2026 to 16 APR 2026