

KUSSO TWO DEPARTURE (RNAV)  
(KUSSO2.KUSSO) 22JAN26

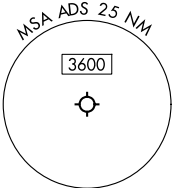
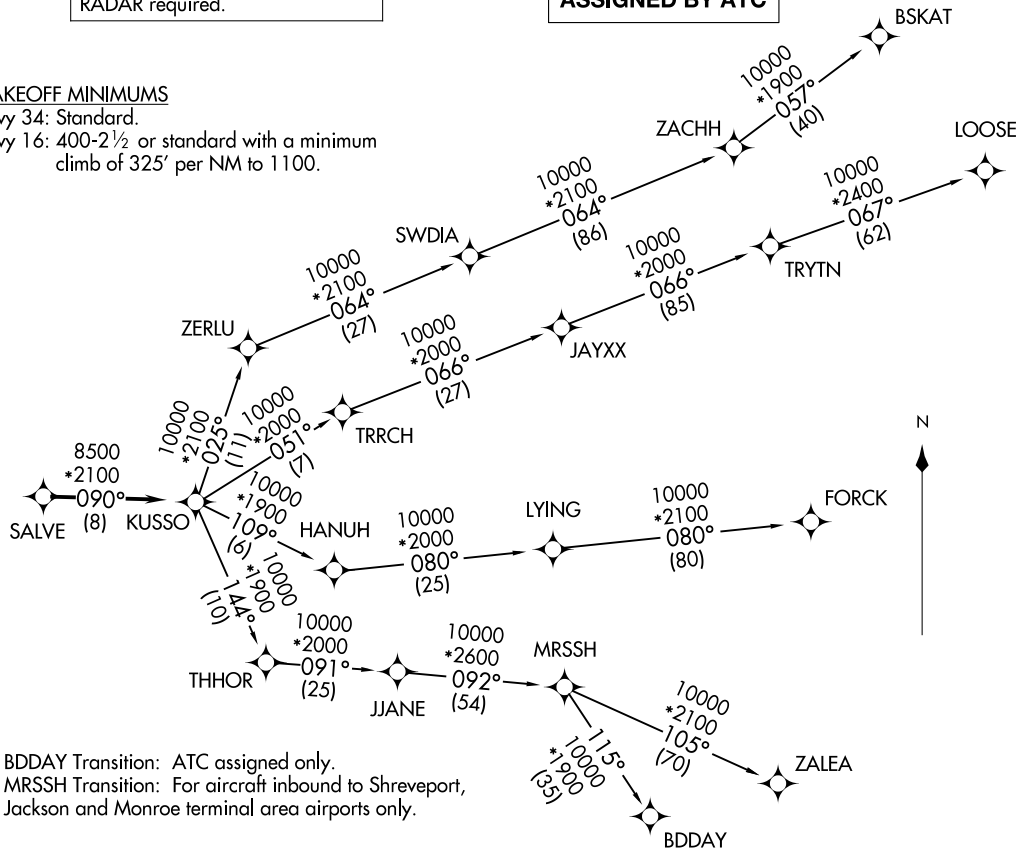
LONE STAR DEP CON  
124.3 282.275  
ATIS  
133.4  
CLNC DEL  
119.55  
GND CON  
121.6  
ADDITION TOWER ★  
126.0 (CTAF) 239.0

RNAV 1 - DME/DME/IRU or GPS.
RADAR required.

**TOP ALTITUDE:  
ASSIGNED BY ATC**

TAKEOFF MINIMUMS

Rwy 34: Standard.  
Rwy 16: 400-2½ or standard with a minimum climb of 325' per NM to 1100.



NOTE: BDDAY Transition: ATC assigned only.  
NOTE: MRSSH Transition: For aircraft inbound to Shreveport, Jackson and Monroe terminal area airports.

(CONTINUED ON FOLLOWING PAGE)

NOTE: Chart not to scale.

DALLAS, TEXAS  
ADDITION (ADS)

(KUSSO2.KUSSO) 26022  
KUSSO TWO DEPARTURE (RNAV)

AL748 (FAA)

ADDITION (ADS)  
DALLAS, TEXAS

# KUSSO TWO DEPARTURE (RNAV)



## DEPARTURE ROUTE DESCRIPTION

When entering controlled airspace, fly heading assigned by ATC, expect vector to SALVE, then on track 090° to KUSSO, then on assigned transition. Maintain ATC assigned altitude, expect filed altitude 10 minutes after departure.

- BDDAY TRANSITION (KUSSO2.BDDAY)
- BSKAT TRANSITION (KUSSO2.BSKAT)
- FORCK TRANSITION (KUSSO2.FORCK)
- LOOSE TRANSITION (KUSSO2.LOOSE)
- MRSSH TRANSITION (KUSSO2.MRSSH)
- ZALEA TRANSITION (KUSSO2.ZALEA)

SC-2, 19 MAR 2026 to 16 APR 2026

SC-2, 19 MAR 2026 to 16 APR 2026