

# TEXOMA FIVE DEPARTURE

LONE STAR DEP CON  
124.3 282.275  
ATIS  
133.4  
CLNC DEL  
119.55  
GND CON  
121.6  
ADDISON TOWER ★  
126.0 (CTAF) 239.0

**TOP ALTITUDE:  
ASSIGNED BY ATC**

TULSA  
114.4 TUL :...:  
Chan 91

RADAR and DME required.

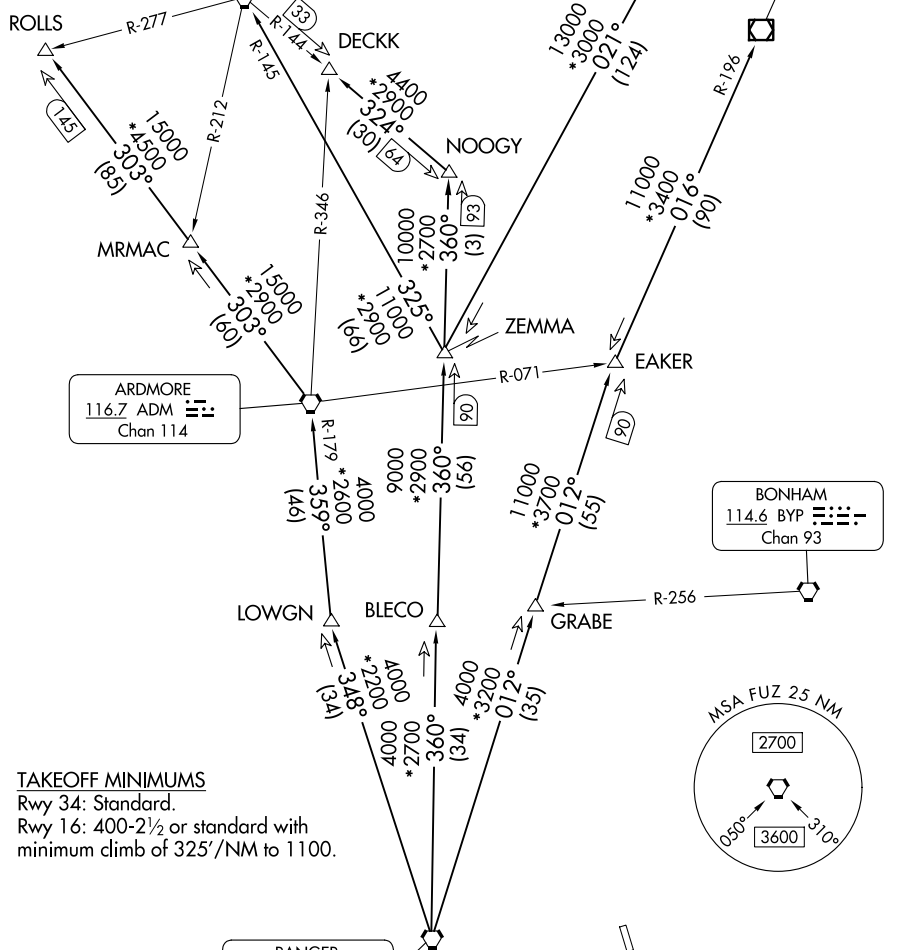
WILL ROGERS  
114.1 IRW :...:  
Chan 88

OKMULGEE  
114.9 OKM :...:  
Chan 96

ARDMORE  
116.7 ADM :...:  
Chan 114

BONHAM  
114.6 BYP :...:  
Chan 93

RANGER  
115.7 FUZ :...:  
Chan 104



SC-2, 19 MAR 2026 to 16 APR 2026

SC-2, 19 MAR 2026 to 16 APR 2026

**TAKEOFF MINIMUMS**  
Rwy 34: Standard.  
Rwy 16: 400-2½ or standard with  
minimum climb of 325'/NM to 1100.

NOTE: Chart not to scale.

(CONTINUED ON FOLLOWING PAGE)

# TEXOMA FIVE DEPARTURE

# TEXOMA FIVE DEPARTURE



## DEPARTURE ROUTE DESCRIPTION

When entering controlled airspace, fly assigned heading for RADAR vectors to appropriate route. Maintain ATC assigned altitude.

ARDMORE TRANSITION (TEX5.ADM): From over FUZ VORTAC on FUZ R-348 to LOWGN, then on ADM R-179 to ADM VORTAC.

BLECO TRANSITION (TEX5.BLECO): From over FUZ VORTAC on FUZ R-360 to BLECO.

DECKK TRANSITION (TEX5.DECKK): From over FUZ VORTAC on FUZ R-360 to NOOGY, then on IRW R-144 to DECKK.

EAKER TRANSITION (TEX5.EAKER): From over FUZ VORTAC on FUZ R-012 to EAKER.

GRABE TRANSITION (TEX5.GRABE): From over FUZ VORTAC on FUZ R-012 to GRABE.

OKMULGEE TRANSITION (TEX5.OKM): From over FUZ VORTAC on FUZ R-012 to EAKER, then on OKM R-196 to OKM VOR/DME.

ROLLS TRANSITION (TEX5.ROLLS): From over FUZ VORTAC on FUZ R-348 to LOWGN, then on ADM R-179 to ADM VORTAC, then on ADM R-303 to ROLLS.

TULSA TRANSITION (TEX5.TUL): From over FUZ VORTAC on FUZ R-360 to ZEMMA, then on TUL R-201 to TUL VORTAC.

WILL ROGERS TRANSITION (TEX5.IRW): From over FUZ VORTAC on FUZ R-360 to ZEMMA, then on IRW R-145 to IRW VORTAC.

ZEMMA TRANSITION (TEX5.ZEMMA): From over FUZ VORTAC on FUZ R-360 to ZEMMA.

NOTE: BLECO Transition: ATC assigned.

NOTE: DECKK Transition: For all aircraft inbound to the Oklahoma City area.

NOTE: EAKER Transition: For aircraft inbound to the Tulsa terminal area.

NOTE: GRABE Transition: ATC assigned.

NOTE: OKMULGEE Transition: For all aircraft overflying OKM VOR/DME proceeding on J181 to BDF to destinations in the Chicago terminal area and north.

NOTE: TULSA Transition: For all aircraft overflying TUL VORTAC.

NOTE: WILL ROGERS Transition: For all aircraft overflying IRW VORTAC.

SC-2, 19 MAR 2026 to 16 APR 2026

SC-2, 19 MAR 2026 to 16 APR 2026